

PLOTTED *K E L E*

EXPLANATORY PLAN
OF CONSOLIDATION OF
LOTS 2, 3 & 4, PLAN 16725
DISTRICT LOT 750
CARIBOO DISTRICT—BRITISH COLUMBIA

SCALE: 1 : 2500



NOTE: Bearings are astronomic, derived from
Plan 16725.

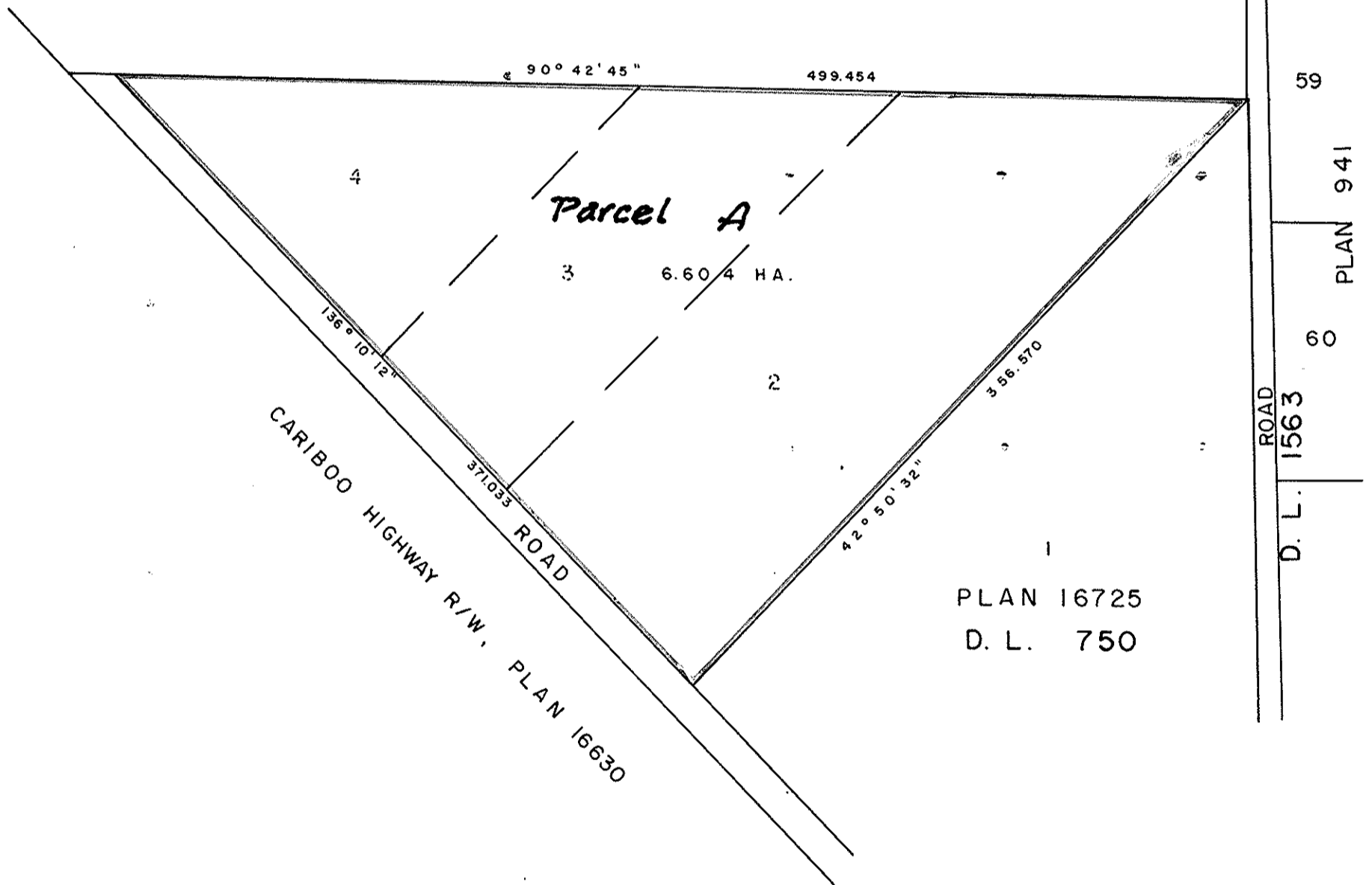
PLAN No 28430

Deposited in the Land Title
Office at Prince George, B.C. this
25 day of JUNE, 1982

E.J. RAVEN
Registrar



S. 1/2 OF S. E. 1/4 D.L. 748



PLAN 16725
D. L. 750

CERTIFIED CORRECT

According to measurements shown on
Plan 16725.
This 24th day of June, 1982.

[Signature]
D. A. DUFFY, B.C.L.S.

This plan lies within the Fraser-Fort George
Regional District.

W. D. USHER & ASSOCIATES
LAND SURVEYORS
PRINCE GEORGE — B. C.

11803 A