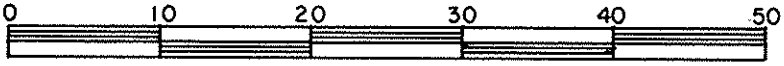


EXPLANATORY PLAN OF CONSOLIDATION OF
 LOTS 20 TO 25 INCLUSIVE, BLOCK 272, PLAN 1268
 AND LOT A, PLAN 19661
 DISTRICT LOT 343
 CARIBOO DISTRICT — BRITISH COLUMBIA

SCALE: 1 : 500



NOTE: Bearings are astronomic, derived from the
 east boundary of Lot A, Plan 19661.

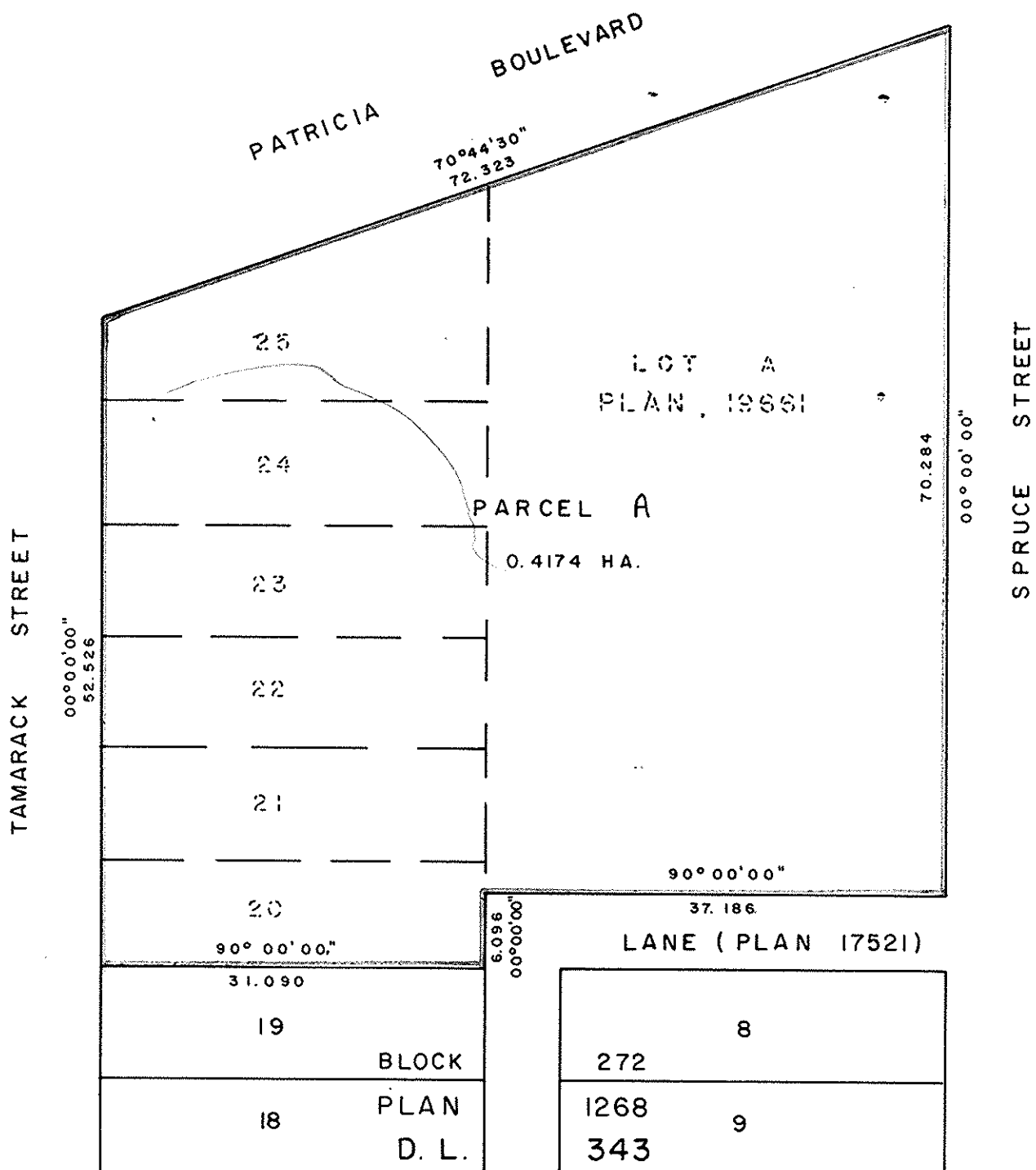
OFFICE OF THE REGISTRAR

PLOTTED *HL*

PLAN No 28429

Deposited in the Land Title
 Office at Prince George, B.C. this
26th day of June, 1982

 Registrar *E.A.R.*



CERTIFIED CORRECT
 According to plans 19661 & 17521 in the
 Prince George Land Title Office.
 This 21st day of June, 1982.

[Signature]
 D.A. DUFFY, B.C.L.S.

This plan lies within the Fraser-Fort George
 Regional District.

W. D. USHER & ASSOCIATES
 LAND SURVEYORS
 PRINCE GEORGE — B. C.
 13414