

EXPLANATORY PLAN TO ACCOMPANY
LEASE OF PORTIONS OF
THE GROUND FLOOR OF BUILDING ON
LOT 14, PLAN 27213
DISTRICT LOT 4039
CARIBOO DISTRICT-BRITISH COLUMBIA

SCALE: 1 : 250



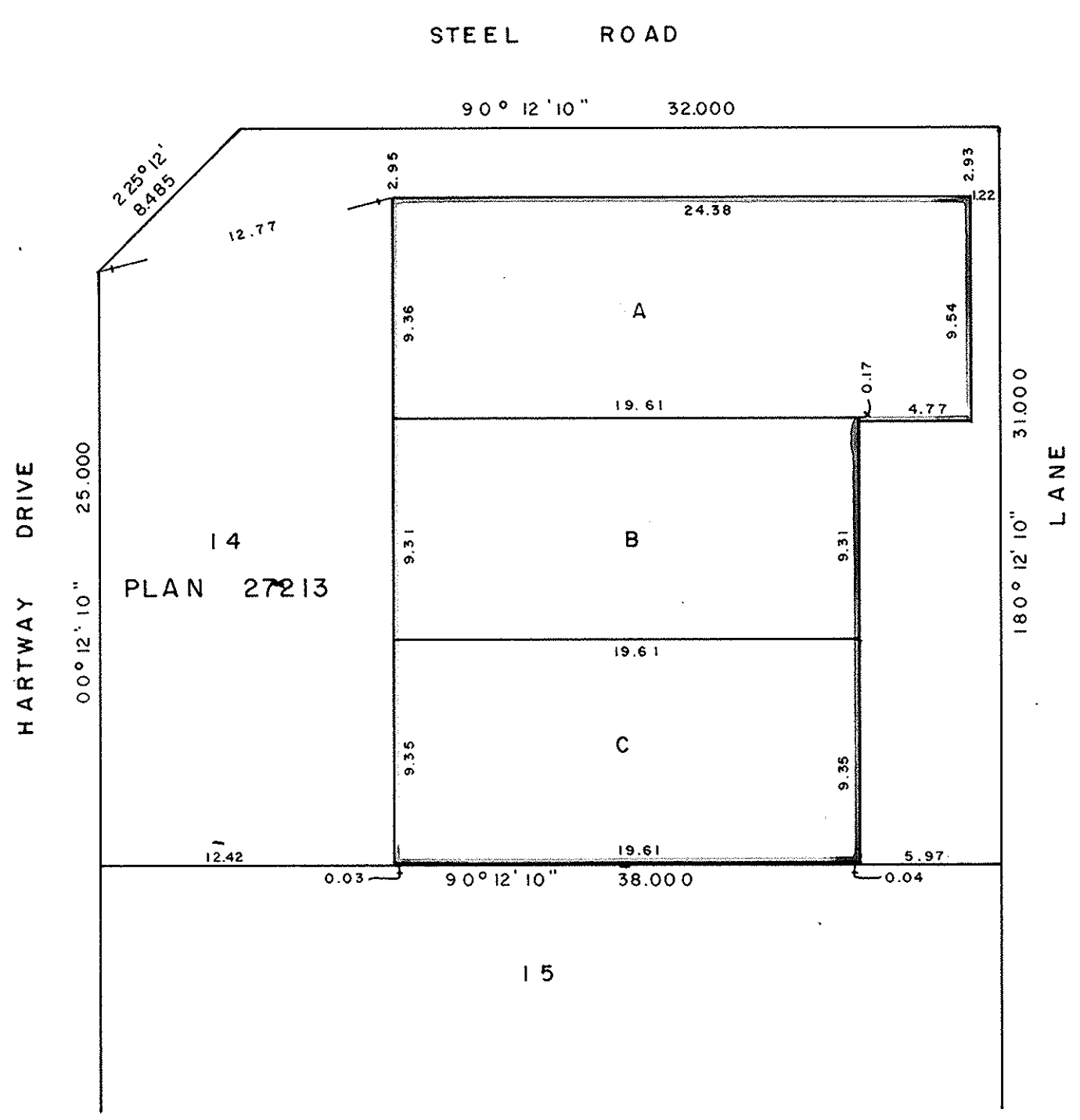
NOTE: Property dimensions are derived from
Plan 27213.

HS 8-23-82

PLAN No 28427

Deposited in the Land Title
Office at Prince George, B.C. this
24th day of June, 1982.

Registrar *ef. D.*



CERTIFIED CORRECT
This 26 day of OCT, 1982.
[Signature]
D.A. DUFFY, B. C. L. S.

W. D. USHER & ASSOCIATES
LAND SURVEYORS
PRINCE GEORGE - B. C.
NY 56 13111