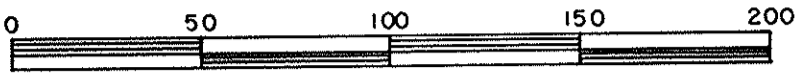


REFERENCE PLAN OF EASEMENT THROUGH
 LOT B, PLAN 28392
 DISTRICT LOT 4031
 CARIBOO DISTRICT — BRITISH COLUMBIA
 SCALE: 1 : 2000

PLOTTED
 K.T. J.T.

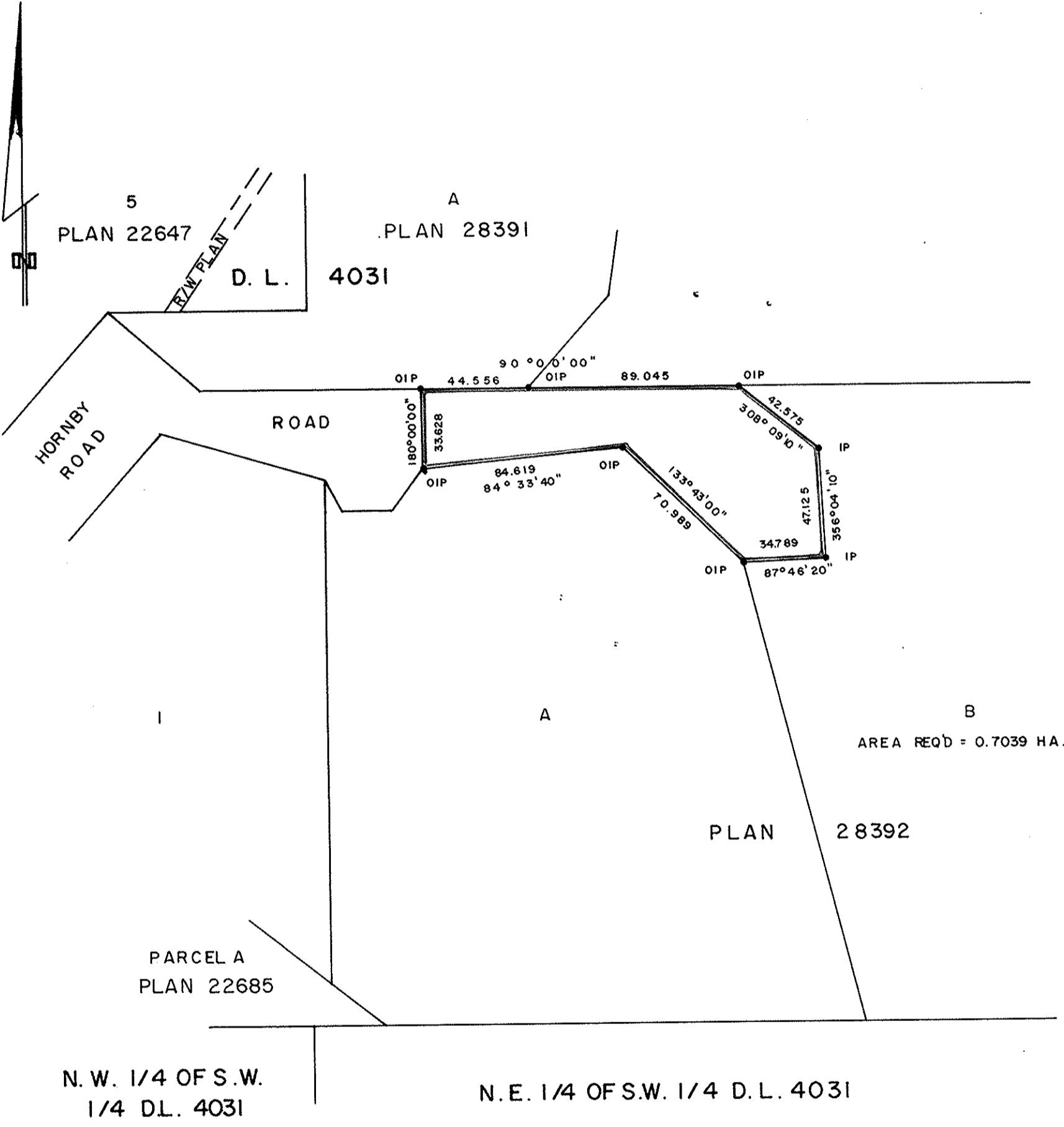


PLAN No 28393
 Deposited in the Land Title
 Office at Prince George, B.C. this
10 day of June, 1982.

NOTE: Bearings are astronomic, derived from the
 north boundary of Lot B, Plan 28392.

LEGEND: • OIP denotes an old iron pin found.
 • IP denotes an iron pin set.

 Registrar E.S.P.



I, DONALD A. DUFFY, a British Columbia Land
 Surveyor, of Prince George, in British Columbia,
 certify that I was present at and did personally
 superintend the survey represented by this plan,
 and that the survey and plan are correct. The
 survey was completed on the 17 day of SEPT.,
 1981.

[Handwritten signature]

This plan lies within the Fraser- Fort George
 Regional District.

W. D. USHER & ASSOCIATES
 LAND SURVEYORS
 PRINCE GEORGE — B.C.