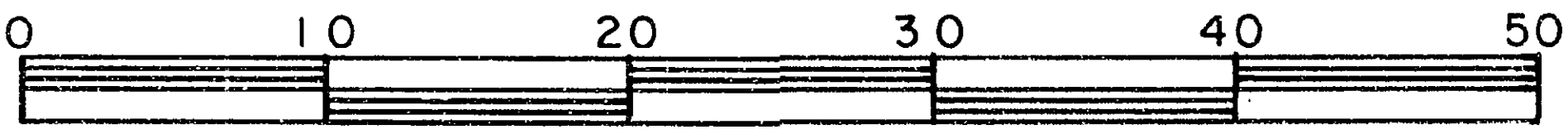


26-FF-226

PLAN OF EASEMENT THROUGH
 LOT B, PLAN
 DISTRICT LOT 932
 CARIBOO DISTRICT — BRITISH COLUMBIA
 SCALE: 1 : 500



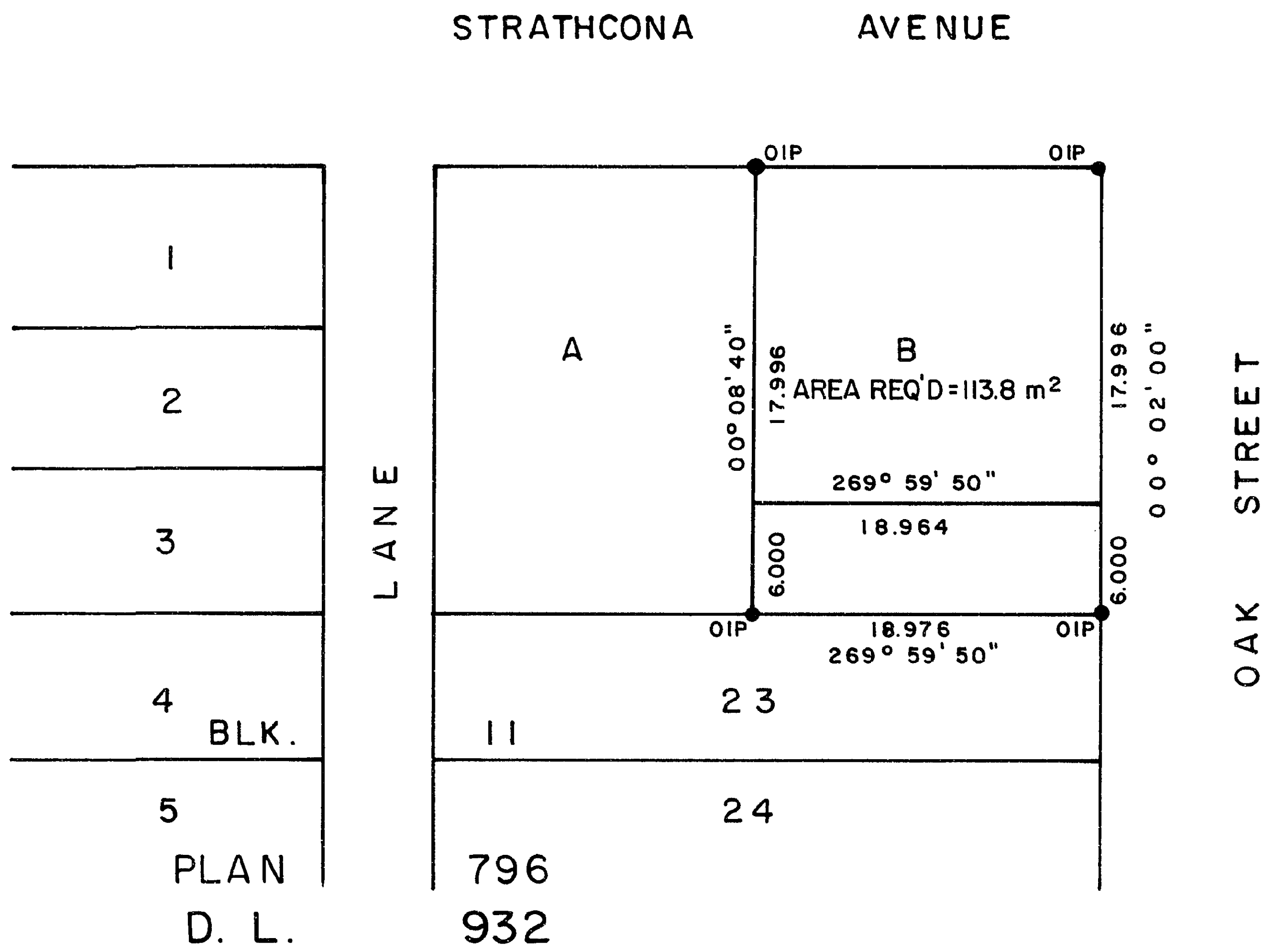
NOTE: Bearings are astronomic, derived from the south boundary of Lot B, Plan

LEGEND: ● OIP denotes an old iron pin found.

PLAN N^o **28385**

Deposited in the Land Title Office at Prince George, B.C. this 9th day of June, 1982.

Registrar E. J. [Signature]



I, DONALD A. DUFFY, a British Columbia Land Surveyor, of Prince George, in British Columbia, certify that I was present at and did personally superintend the survey represented by this plan, and that the survey and plan are correct. The survey was completed on the 13 day of APRIL, 1982.

[Signature]

This plan lies within the Fraser- Fort George Regional District.

W. D. USHER & ASSOCIATES
 LAND SURVEYORS
 PRINCE GEORGE — B.C.
 P.C. 16 13336 A