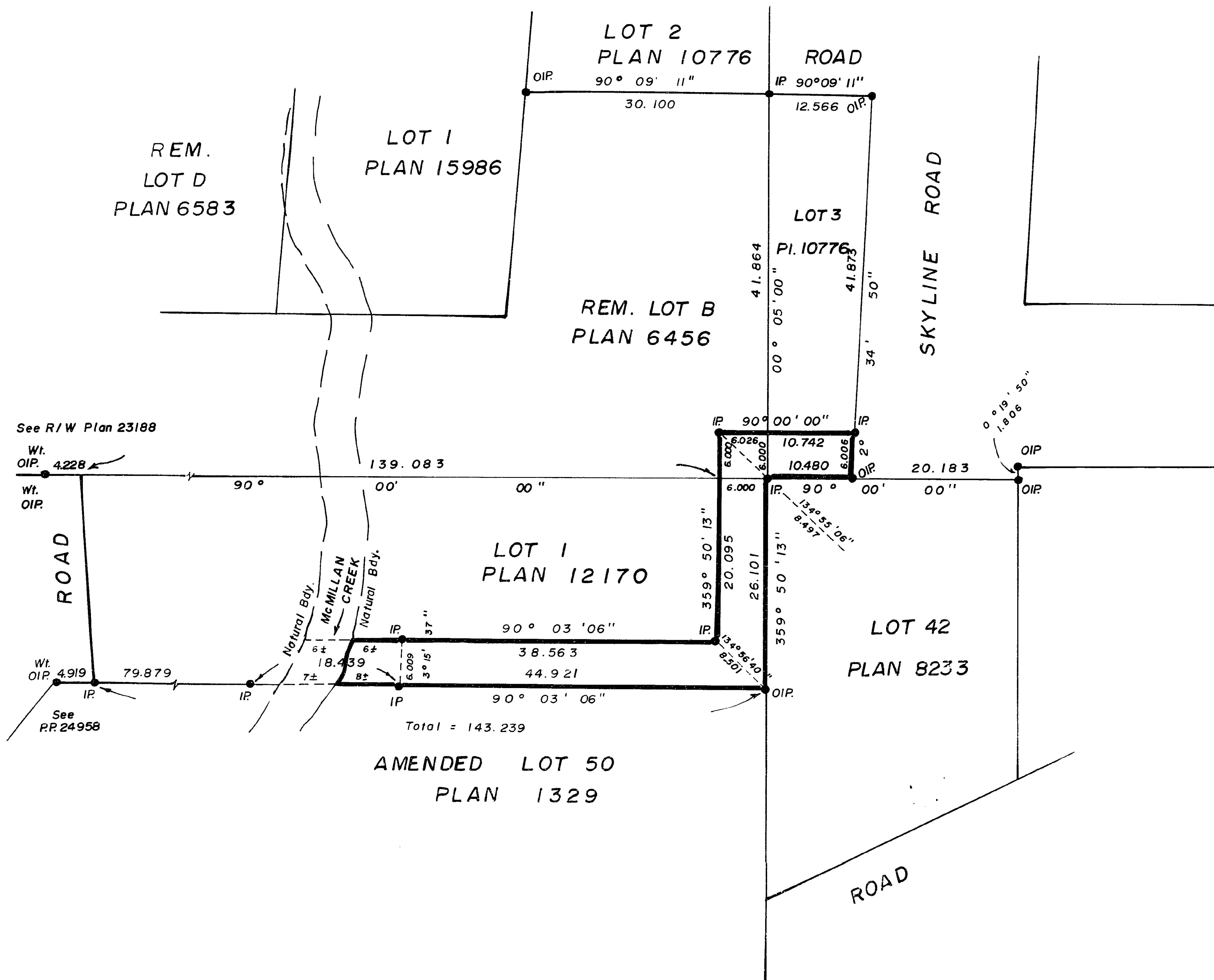


26 FF-226

PLAN NO. 28381

DEPOSITED IN THE LAND TITLE OFFICE AT
PRINCE GEORGE THIS 9th DAY OF June 1982

E. H. ...
REGISTRAR



CITY OF PRINCE GEORGE

PLAN OF STATUTORY RIGHT-OF-WAY
IN REM. LOT B, PLAN 6456,
LOT 3, PLAN 10776, and
LOT 1, PLAN 12170,
DISTRICT LOT 4377, CARIBOO DISTRICT.

SCALE: 1:500 (ALL DISTANCES ARE IN METRES)



LEGEND

- BEARINGS ARE ASTRONOMIC DERIVED FROM
N. BDY. LOT 1, PLAN 12170 SHOWN AS 90° 00' 00"
- IP.....STANDARD IRON POST.
-DENOTES "OLD"
- Wt.....DENOTES "WITNESS"

I, V. BARTELL, A BRITISH COLUMBIA LAND SURVEYOR
OF PRINCE GEORGE IN BRITISH COLUMBIA CERTIFY THAT
I WAS PRESENT AT AND PERSONALLY SUPERINTENDED THE
SURVEY REPRESENTED BY THIS PLAN AND THAT THE
SURVEY AND PLAN ARE CORRECT. THE SAID SURVEY WAS
COMPLETED ON THE 11 DAY OF MAY, 1982.

Victor Bartell
V. BARTELL, B.C.L.S.

THIS PLAN LIES WITHIN THE FRASER FORT
GEORGE REGIONAL DISTRICT.

BOOK OF REFERENCE	
Description	Area
LOT 1, PLAN 12170	431 m ²
REM. LOT B, PLAN 6456,	36 m ²
LOT 3, PLAN 10776	64 m ²

Mc WILLIAM, WHYTE, GOBLE, & ASSOCIATES,
B.C. LAND SURVEYORS,
PRINCE GEORGE-KAMLOOPS-SMITHERS-SALMON ARM.

REF. NO. 82042 (D.L. 4377)