

26-FF-226

PLAN NO. 28340

DEPOSITED IN THE LAND TITLE OFFICE, AT PRINCE GEORGE THIS 26th DAY OF May 1982.

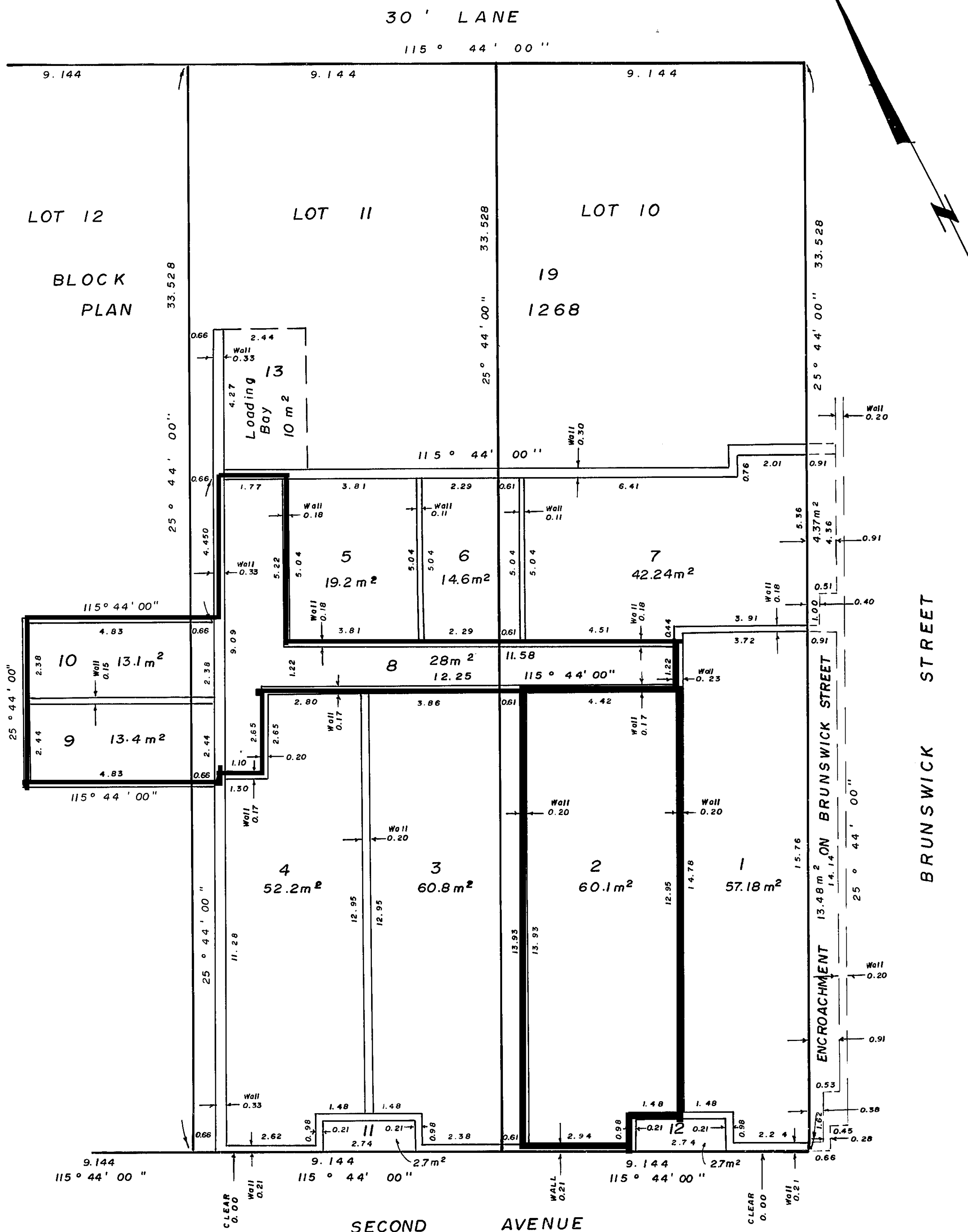
REGISTRAR

EXPLANATORY PLAN OF LEASEHOLDS OF BUILDING ON PARTS OF LOTS 10, 11, 12 OF BLOCK 19, PLAN 1268, D.L. 343, CARIBOO DISTRICT.

SCALE: 1:100



DISTANCES IN METRES AND DECIMALS THEREOF. ALL INTERIOR ANGLES ARE 90° 00'



BRUNSWICK STREET

CERTIFIED CORRECT ACCORDING TO LAND TITLE OFFICE RECORDS THIS 12th DAY OF AUGUST 1980

V. BARTELL B.C.L.S.

THIS PLAN LIES WITHIN THE FRASER FORT GEORGE REGIONAL DISTRICT.

McWILLIAM, WHYTE, GOBLE, & ASSOCIATES, B.C. LAND SURVEYORS, PRINCE GEORGE - KAMLOOPS - SMITHERS - SALMON ARM. REF. NO. 77146 (Blk.19, Pl.1268, DL343)