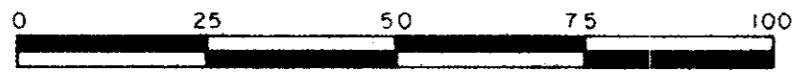


(FT, FU)

PLAN OF SUBDIVISION OF
PART OF REMAINDER OF
N. E. 1/4 DISTRICT LOT 4048
CARIBOO DISTRICT - BRITISH COLUMBIA

SCALE: 1 : 1000



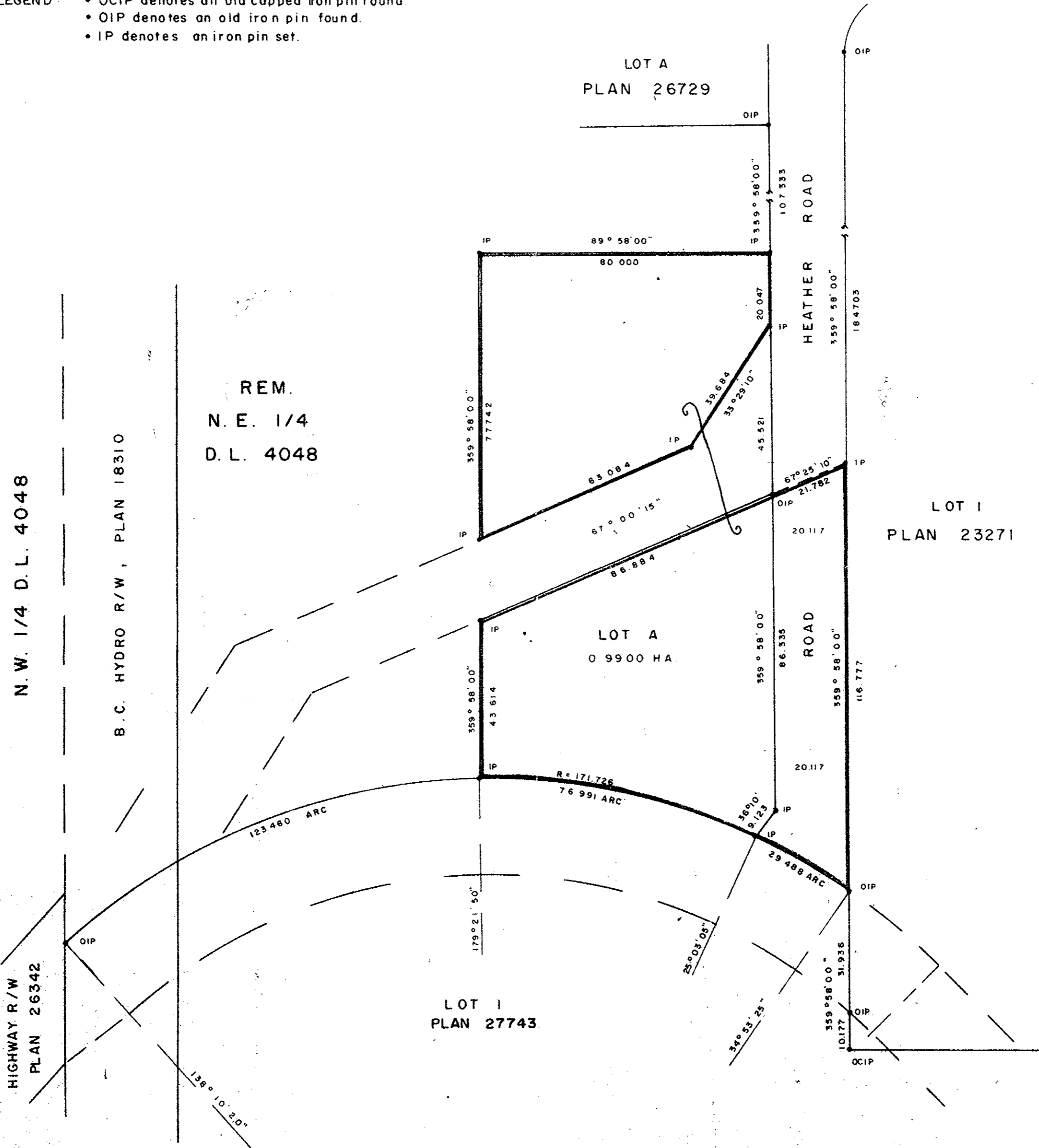
All distances are in metres except where otherwise indicated.

NOTE: Bearings are astronomic, derived from the west boundary of Lot 1, Plan 23271.

LEGEND: • OCIP denotes an old capped iron pin found.
• OIP denotes an old iron pin found.
• IP denotes an iron pin set.

PLAN No. 28335
Deposited in the Land Title
Office at Prince George, B.C. this
25th day of May, 1982

"E. Raven"
Registrar



I, RONALD L. JOHNS, a British Columbia Land Surveyor, of Prince George, in British Columbia, certify that I was present at and did personally superintend the survey represented by this plan, and that the survey and plan are correct. The survey was completed on the 1st day of JUNE, 1981.

[Signature]

I hereby certify that this is a true copy of the Official Plan on deposit with the Surveyor General, Ministry of Lands, Parks and Housing, and numbered Plan: 38 Tube 1139.

[Signature]
Surveyor General
Victoria, B.C. May 7 1982

Approved under the Land Title Act this 22 day of April, 1982

[Signature]
Approving Officer, City of Prince George

This plan lies within the Fraser-Fort George Regional District.

WD. USHER & ASSOCIATES
LAND SURVEYORS
PRINCE GEORGE - B.C.
P.A. 38-39 12088