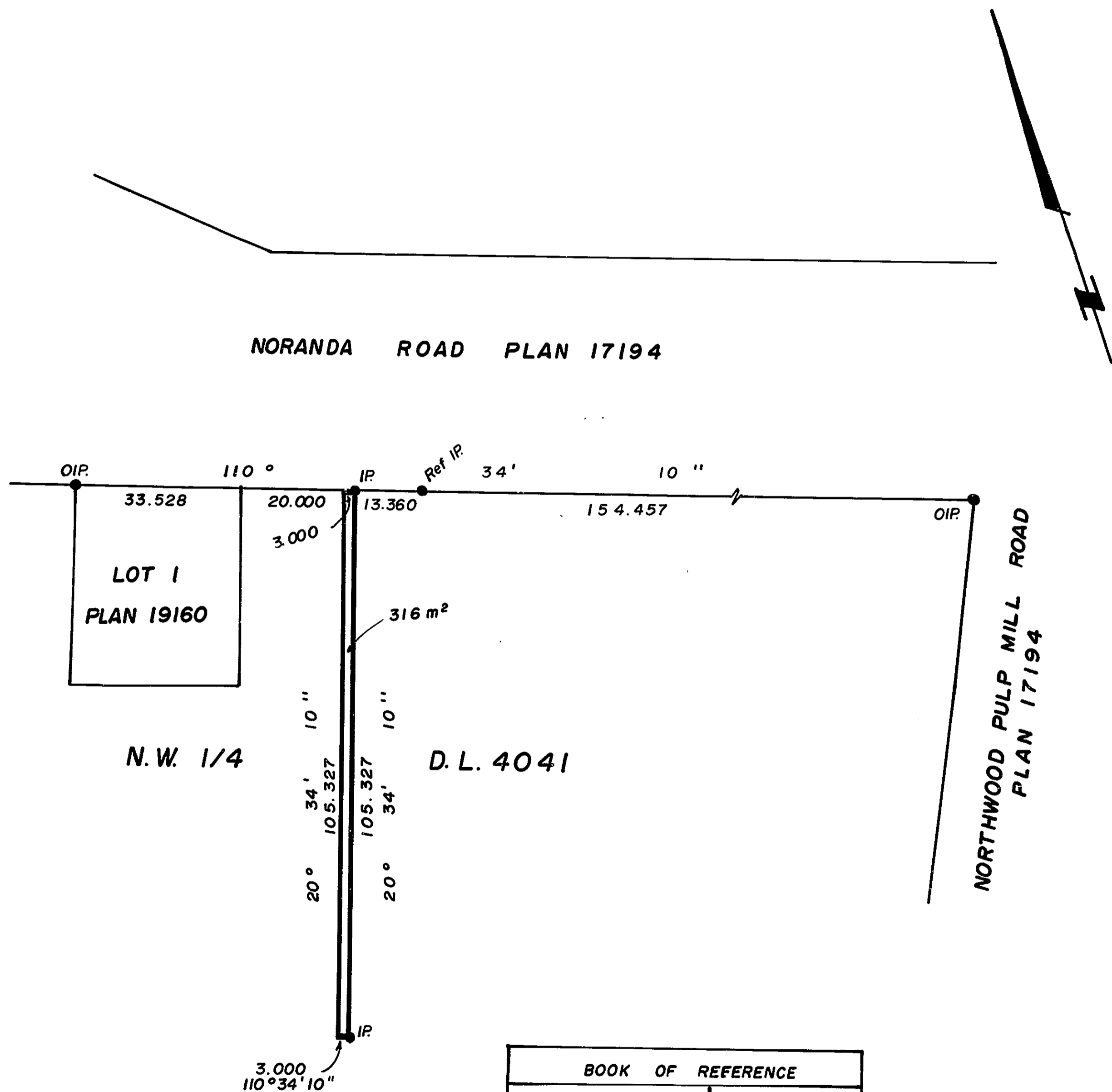


26FF-226

PLAN NO. 28333

DEPOSITED IN THE LAND TITLE OFFICE AT
PRINCE GEORGE THIS 21ST DAY OF MAY 1982.

"E.J. RAVEN" per S.M.
REGISTRAR



PLAN OF STATUTORY RIGHT-OF-WAY
IN N.W.1/4 D.L. 4041,
CARIBOO DISTRICT.

SCALE: 1: 1000

20 10 0 25 50
(DISTANCES ARE IN METRES)

BEARINGS ARE ASTRONOMIC DERIVED
FROM PLAN 17194.

●IP..... STANDARD IRON POST.
○..... DENOTES "OLD"

I, D. KEOWN, A BRITISH COLUMBIA LAND
SURVEYOR OF PRINCE GEORGE IN BRITISH
COLUMBIA CERTIFY THAT I WAS PRESENT AT
AND PERSONALLY SUPERINTENDED THE SURVEY
REPRESENTED BY THIS PLAN AND THAT THE
SURVEY AND PLAN ARE CORRECT. THE SURVEY
WAS COMPLETED ON THE 29th DAY OF
APRIL, 1982.

Dale Keown
DALE KEOWN, B.C.L.S.

BOOK OF REFERENCE	
N.W.1/4 D.L.4041	316m ²

THIS PLAN LIES WITHIN THE FRASER
FORT GEORGE REGIONAL DISTRICT.

McWILLIAM, WHYTE, GOBLE, & ASSOCIATES,
B.C. LAND SURVEYORS,
PRINCE GEORGE-KAMLOOPS-SMITHERS-SALMON ARM.

REF. NO. 82027 (D.L. 4041)