

REFERENCE PLAN OF
 PARCEL A, (PLAN 27232) OF
 BLOCK 23, PLAN 1409
 DISTRICT LOT 417
 CARIBOO DISTRICT — BRITISH COLUMBIA
 SCALE: 1 : 500

(JK)
 PLOTTED



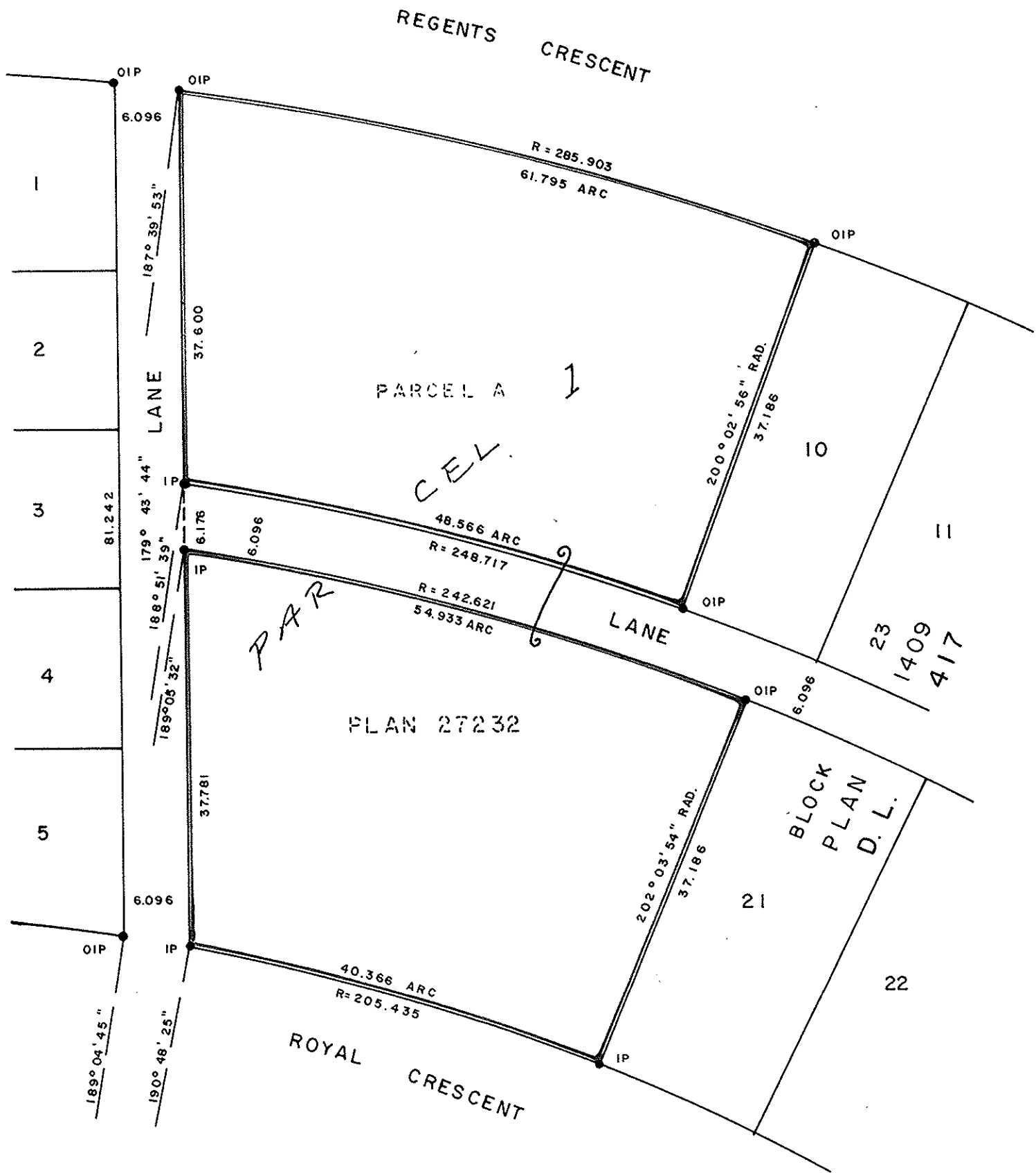
PLAN No 28312

Deposited in the Land Title
 Office at Prince George, B.C. this
14 day of May, 1982.

NOTE: Bearings are astronomic, derived from the west
 boundary of Lot 10, Block 23 as shown on Plan 20359.

LEGEND: ● OIP denotes an old iron pin found.
 ● IP denotes an iron pin set.

E. J. P.
 Registrar



I, RONALD L. JOHNS, a British Columbia Land
 Surveyor, of Prince George, in British Columbia,
 certify that I was present at and did personally
 superintend the survey represented by this plan,
 and that the survey and plan are correct. The
 survey was completed on the 11th day of MARCH,
 1982.

R. L. Johns

This plan lies within the Fraser- Fort George
 Regional District.

W. D. USHER & ASSOCIATES
 LAND SURVEYORS
 PRINCE GEORGE — B.C.