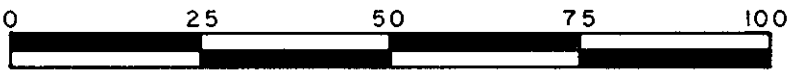


PLAN OF SUBDIVISION OF
 LOTS 24 & 25, PLAN 20574
 DISTRICT LOT 4040
 CARIBOO DISTRICT—BRITISH COLUMBIA

SCALE: 1 : 1000



NOTE: Bearings are astronomic, derived from the south boundary of Lots 24 & 25, Plan 20574.

LEGEND: •OIP denotes an old iron pin found.
 •IP denotes an iron pin set.

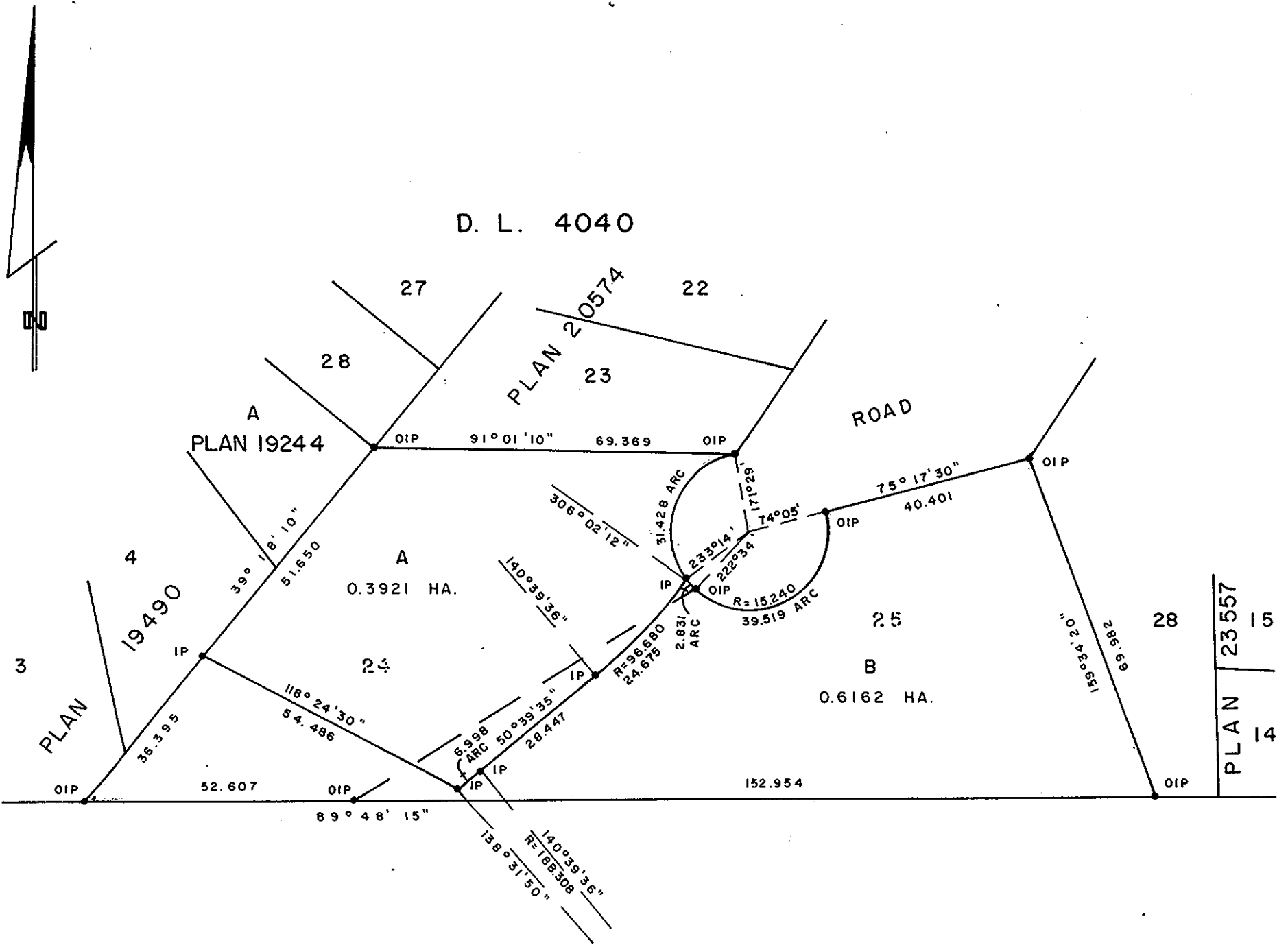
(HQ)

PLOTTED

PLAN N^o 28284

Deposited in the Land Title Office at Prince George, B.C. this 30 day of APRIL, 1982.

E. J. RAVEN
 Registrar



REMAINDER OF S. 1/2 OF FRAC. S.E. 1/4

D. L. 4040

MOUNT ALDER ESTATES

Owner Justin [Signature]

Witness [Signature]

NORTHLAND BANK

Authorized Signatory

Authorized Signatory

Authorized Signatory

Authorized Signatory

Approved under the Land Title Act this 29 day of MAR, 1982

I, DONALD A. DUFFY, a British Columbia Land Surveyor, of Prince George, in British Columbia, certify that I was present at and did personally superintend the survey represented by this plan, and that the survey and plan are correct. The survey was completed on the 5th day of May, 1981.

[Signature]

BANK OF MONTREAL
 BY ITS ATTORNEYS MIA #028588

Authorized Signatory
 DIVISIONAL MANAGER MORTGAGES

Authorized Signatory
 MORTGAGE SERVICE SUPERVISOR

A. Robinson
 WITNESS AS TO BOTH SIGNATURES

Approving Officer, City of Prince George

This plan lies within the Fraser-Fort George Regional District.

W. D. USHER & ASSOCIATES
 LAND SURVEYORS
 PRINCE GEORGE — B.C.
 N M 37 8289 N