

PLOTTED (HK)

EXPLANATORY PLAN OF STATUTORY RIGHT-of-WAY
 WITHIN LOT 18, BLOCK 331, PLAN 1268,
 DISTRICT LOT 343, CARIBOO DISTRICT.

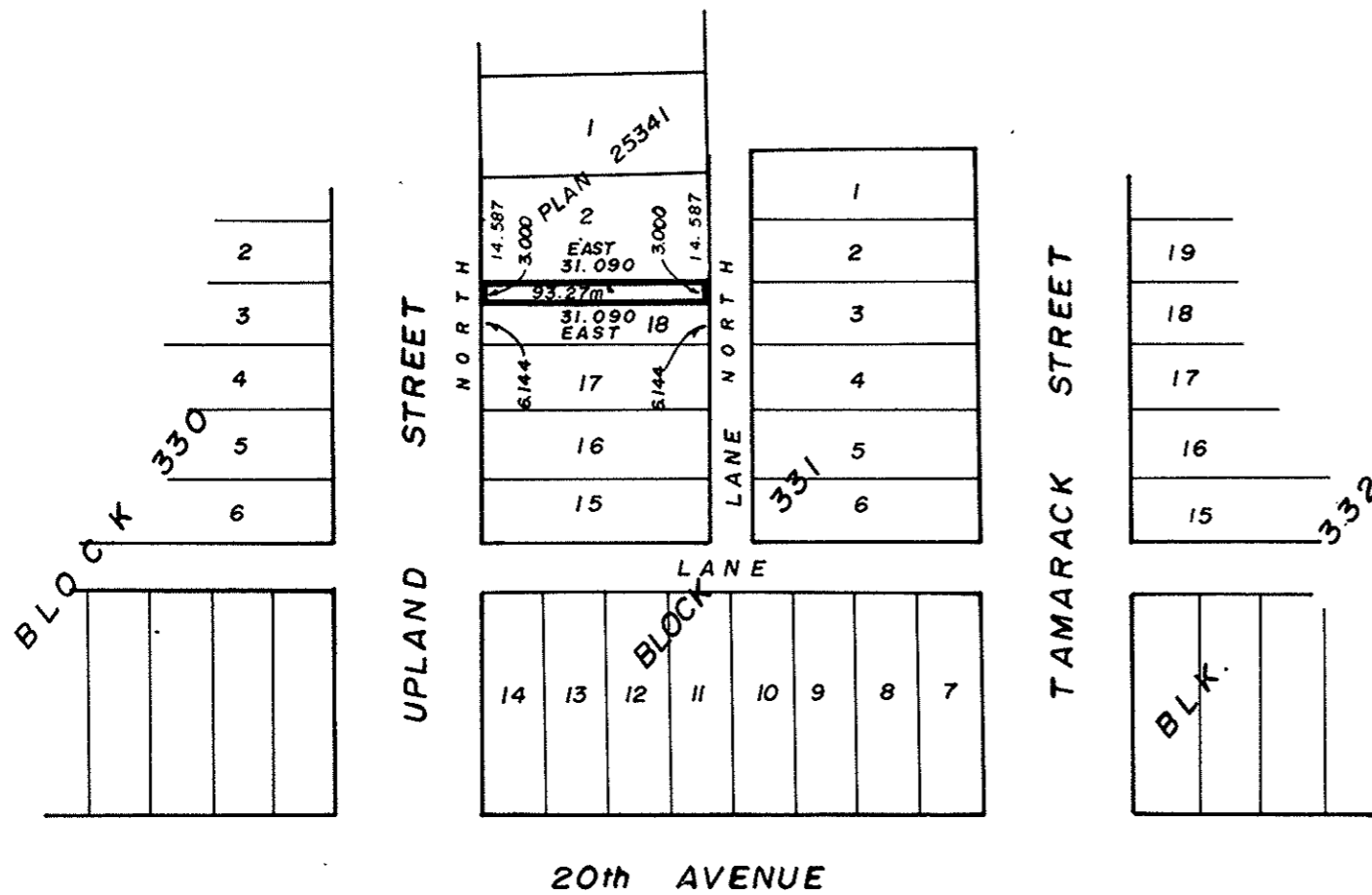
SCALE: 1:1000



All distances are in metres.

PLAN NO. 28270
 DEPOSITED IN THE LAND TITLE OFFICE AT
 PRINCE GEORGE THIS 22 DAY OF APRIL 1982.

E.J. RAVEN
 REGISTRAR



CERTIFIED CORRECT
 ACCORDING TO LAND TITLE OFFICE RECORDS
 THIS 24th DAY OF MARCH, 1982.

D. Keown
 D. KEOWN, B.C.L.S.

THIS PLAN LIES WITHIN THE FRASER FORT
 GEORGE REGIONAL DISTRICT.

BOOK OF REFERENCE	
Description	Area
LOT 18, BLK.331, PLAN 1268	93.27 m ²

McWILLIAM, WHYTE, GOBLE, & ASSOCIATES,
 B.C. LAND SURVEYORS,
 PRINCE GEORGE - KAMLOOPS - SMITHERS - SALMON ARM.
 REF. NO. 82025