

PLAN NO. 28135

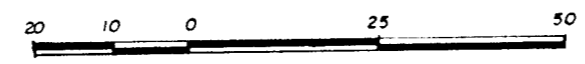
DEPOSITED IN THE LAND TITLE OFFICE AT PRINCE GEORGE THIS 25. DAY OF February 1982

E.J. RAVEN
REGISTRAR

H.S.

EXPLANATORY PLAN TO CONSOLIDATE THE
REMAINDER LOT 56 and LOT 57 of PLAN 9543,
DISTRICT LOT 4047, CARIBOO DISTRICT.

SCALE: 1:1000



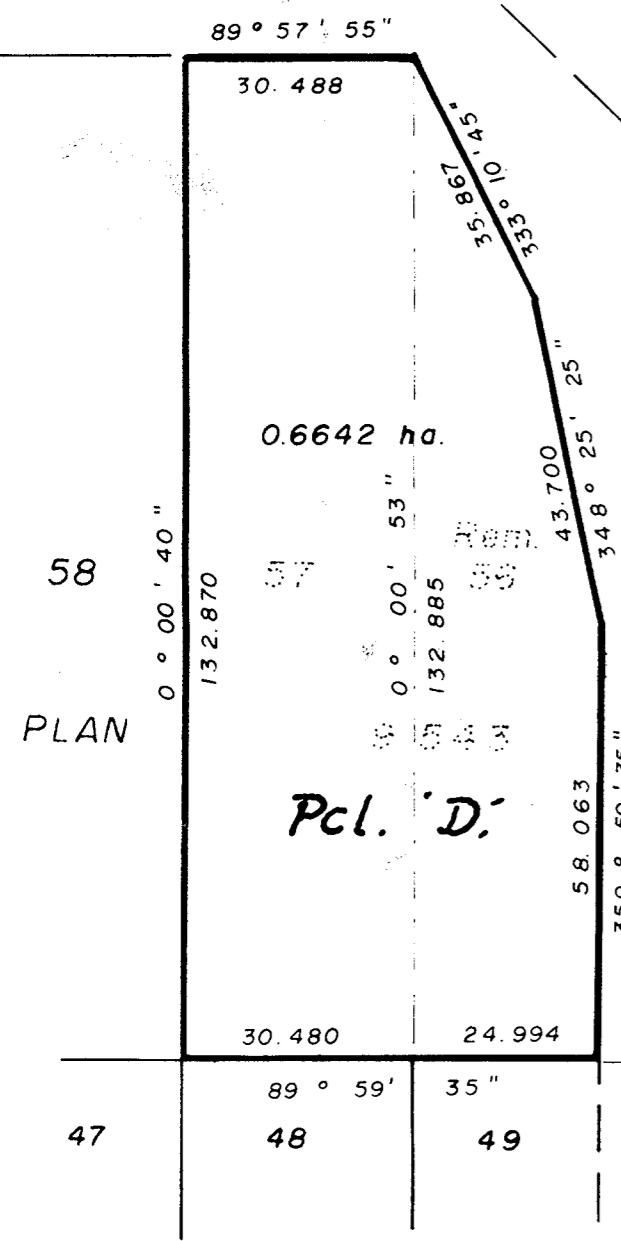
ALL DISTANCES ARE IN METRES.

RICHET ROAD

HART HIGHWAY PLAN H-226

MADILL ROAD

GAZETTED ROAD
Feb. 1981



0.6642 ha.

Pcl. 'D'

PLAN 26347

BEARINGS ARE ASTRONOMIC DERIVED FROM PLAN 26347.

CERTIFIED CORRECT
ACCORDING TO INFORMATION ON PLAN 26347,
THIS 5th DAY OF NOVEMBER, 1981.

Victor Barzell
V. BARTELL, B.C.L.S.,

OWNER: RAEBER INVESTMENTS LTD INC # 113236

Authorized Signatories

This plan lies within the Fraser Fort George
Regional District.

McWilliam, Whyte, Gable, & Associates.
B.C. Land Surveyors,
Prince George-Kamloops-Smithers-Salmon Arm
REF. NO. 81227. (D.L.4047)