

26-FF-226

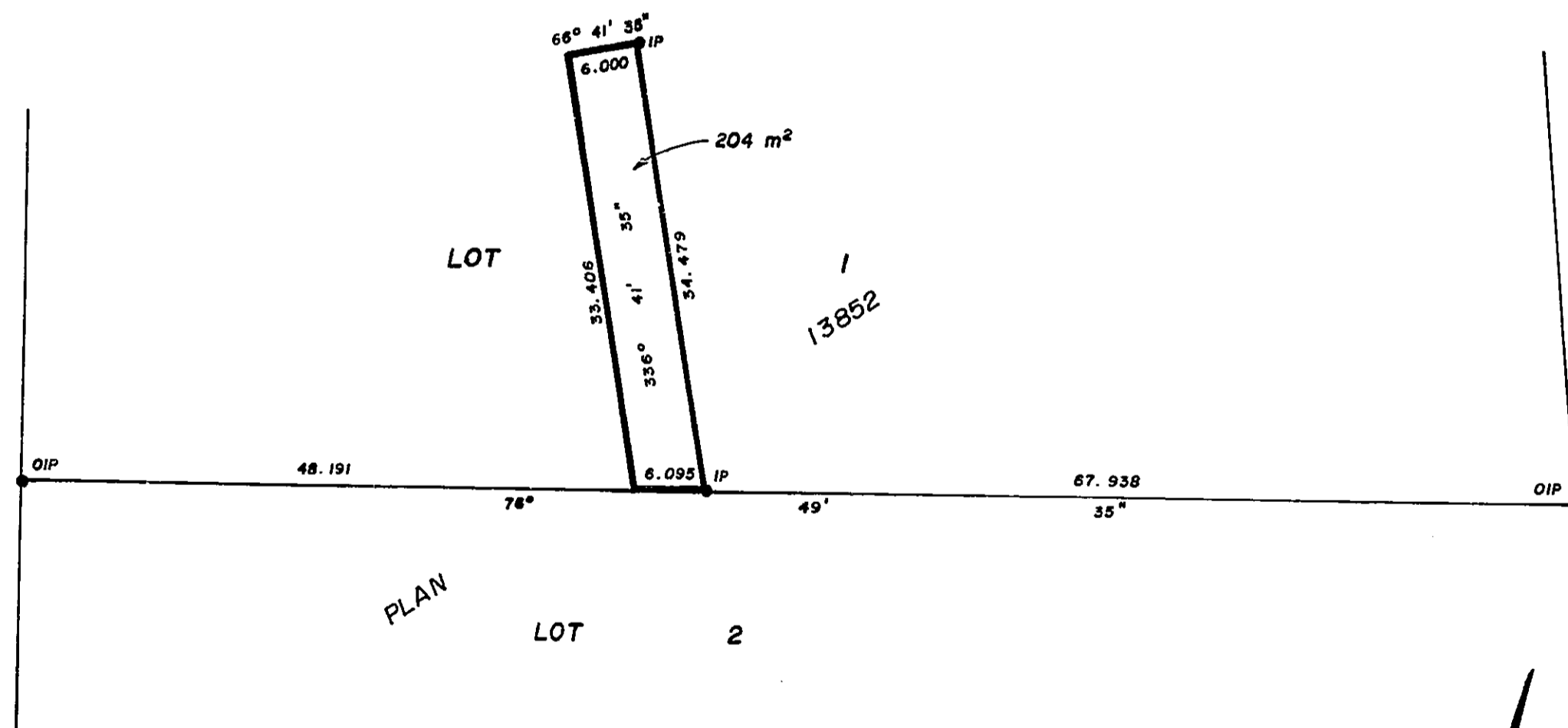
**PLAN 28124**

Deposited in the Land Title Office  
at Prince George, B.C.  
on the 18 day of Feb. 1981.

*E. J. Haron*  
Registrar

REFERENCE PLAN OF EASEMENT IN  
LOT 1, PLAN 13852, DISTRICT LOT 1593,  
CARIBOO DISTRICT.

SCALE: 1: 500



BOOK OF REFERENCE		
DESCRIPTION		AREA
LOT 1	PLAN 13852	204 m <sup>2</sup>

Bearings are astronomic and are derived from  
PLAN 13852

- P.con. .... Standard Concrete Post.
- P.Rock ..... Standard Rock Post.
- P.P. .... Standard Pipe Post.
- I.P. .... Standard Iron Post.
- P. .... Wooden Post.
- L.P. .... Lead Plug.
- ..... Denoting "Old"
- WT. .... Denoting "Witness"
- CIP ..... Capped Iron Post.
- TH. .... Traverse Hub.
- m<sup>2</sup> ..... Square Meters

I, DALE KEOWN, a British Columbia  
land surveyor, of PRINCE GEORGE,  
in British Columbia, certify that I was present  
at and personally superintended the survey  
represented by this plan, and that the survey  
and plan are correct. The survey was completed  
on the 21 day of August 1981.

*Dale Keown*  
D. Keown, B.C.L.S.

*Linda Rogers*  
*Jane Rafter*

*Victor Paine (Land Surveyor)*  
Witness to both  
1515-5th Ave  
Prince George, B.C.

This Plan lies within the Fraser-Fort George  
Regional District

McWilliam-Whyte-Goble & Associates  
B.C. Land Surveyors  
Kamloops-Prince George-Salmon Arm-Smithers  
FB/P File No. 81179