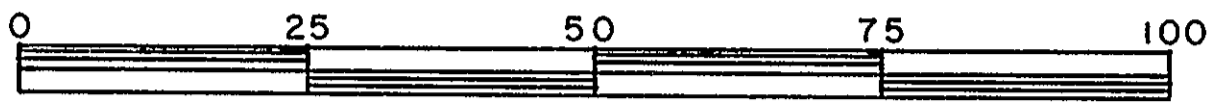


26

EXPLANATORY PLAN OF STATUTORY RIGHT- OF-WAY
 FOR MUNICIPAL PURPOSES THROUGH
 LOTS 1, 2, 3 & 4, PLAN 8471,
 LOTS A & B, PLAN 6840 & LOT 41, PLAN 1329
DISTRICT LOT 4377
 CARIBOO DISTRICT — BRITISH COLUMBIA
 SCALE: 1 : 1000



NOTE: Bearings are astronomic, derived from the west boundary of Lots 1 to 4, Plan 8471 as shown on Plan 17194.

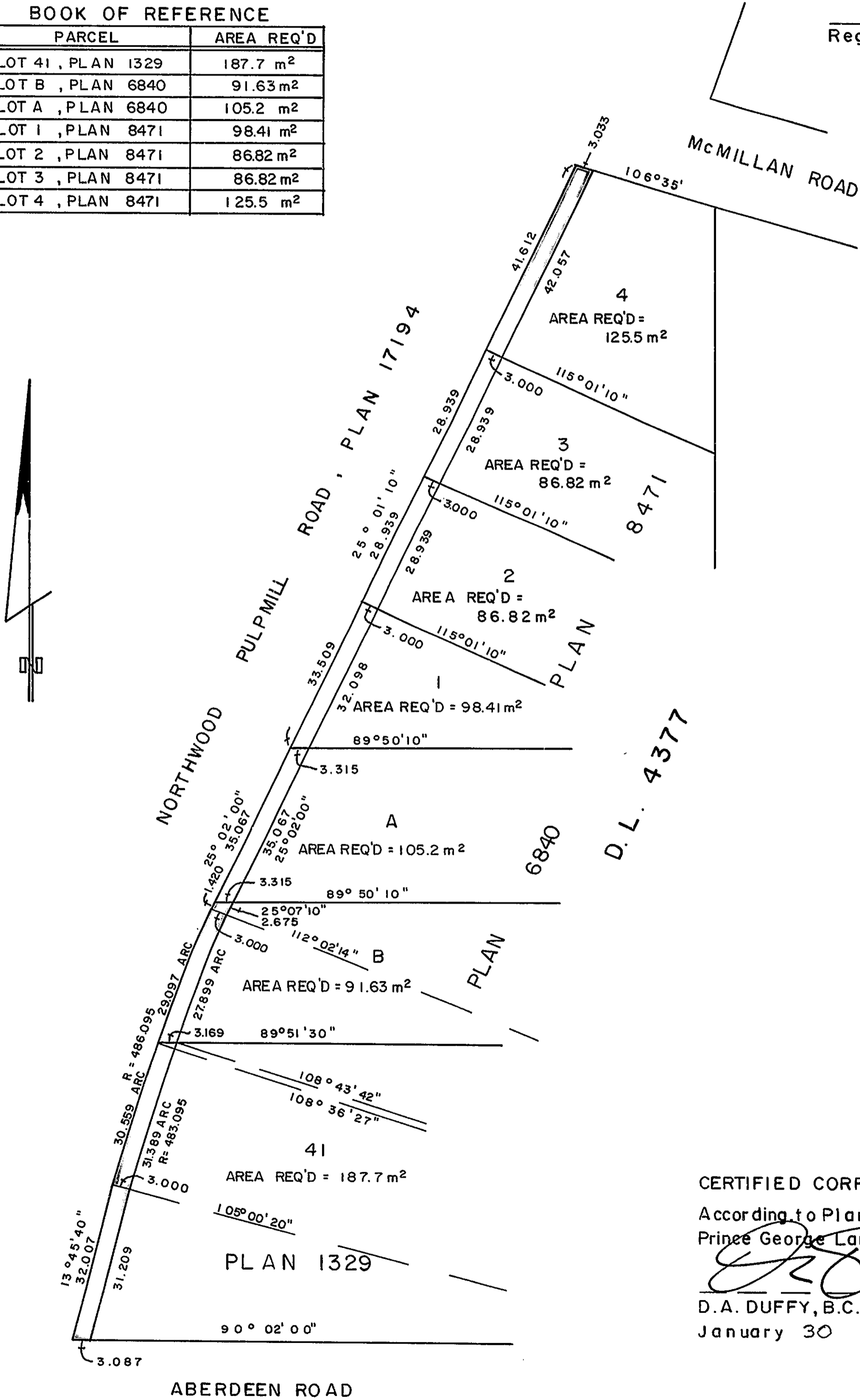
PLAN No **28100**

Deposited in the Land Title Office at Prince George, B.C. this 09 day of Feb., 1982.

E. J. Raven
 Registrar *per sp.*

BOOK OF REFERENCE

PARCEL	AREA REQ'D
LOT 41, PLAN 1329	187.7 m ²
LOT B, PLAN 6840	91.63 m ²
LOT A, PLAN 6840	105.2 m ²
LOT 1, PLAN 8471	98.41 m ²
LOT 2, PLAN 8471	86.82 m ²
LOT 3, PLAN 8471	86.82 m ²
LOT 4, PLAN 8471	125.5 m ²



CERTIFIED CORRECT

According to Plans of record in the Prince George Land Title Office.

[Signature]
 D.A. DUFFY, B.C.L.S.
 January 30, 1982.

This plan lies within the Fraser-Fort George Regional District.

W.D. USHER & ASSOCIATES
 LAND SURVEYORS
 PRINCE GEORGE — B.C.