

REFERENCE PLAN OF CONSOLIDATION OF
 LOTS 9, 10 & 11, PLAN 1338, EXCEPT PLAN 18606,
 AND LOT 6, PLAN 1338 EXCEPT PLANS B 5069 & 18606
 AND LOT 12, PLAN 1338 EXCEPT PARTS LYING
 SOUTH AND WEST OF HART HIGHWAY AND EXCEPT PLAN 18606
 AND PART OF PARCEL A (PLAN 18606) PLAN 1338
DISTRICT LOT 2440
 CARIBOO DISTRICT - BRITISH COLUMBIA

SCALE: 1 : 1000

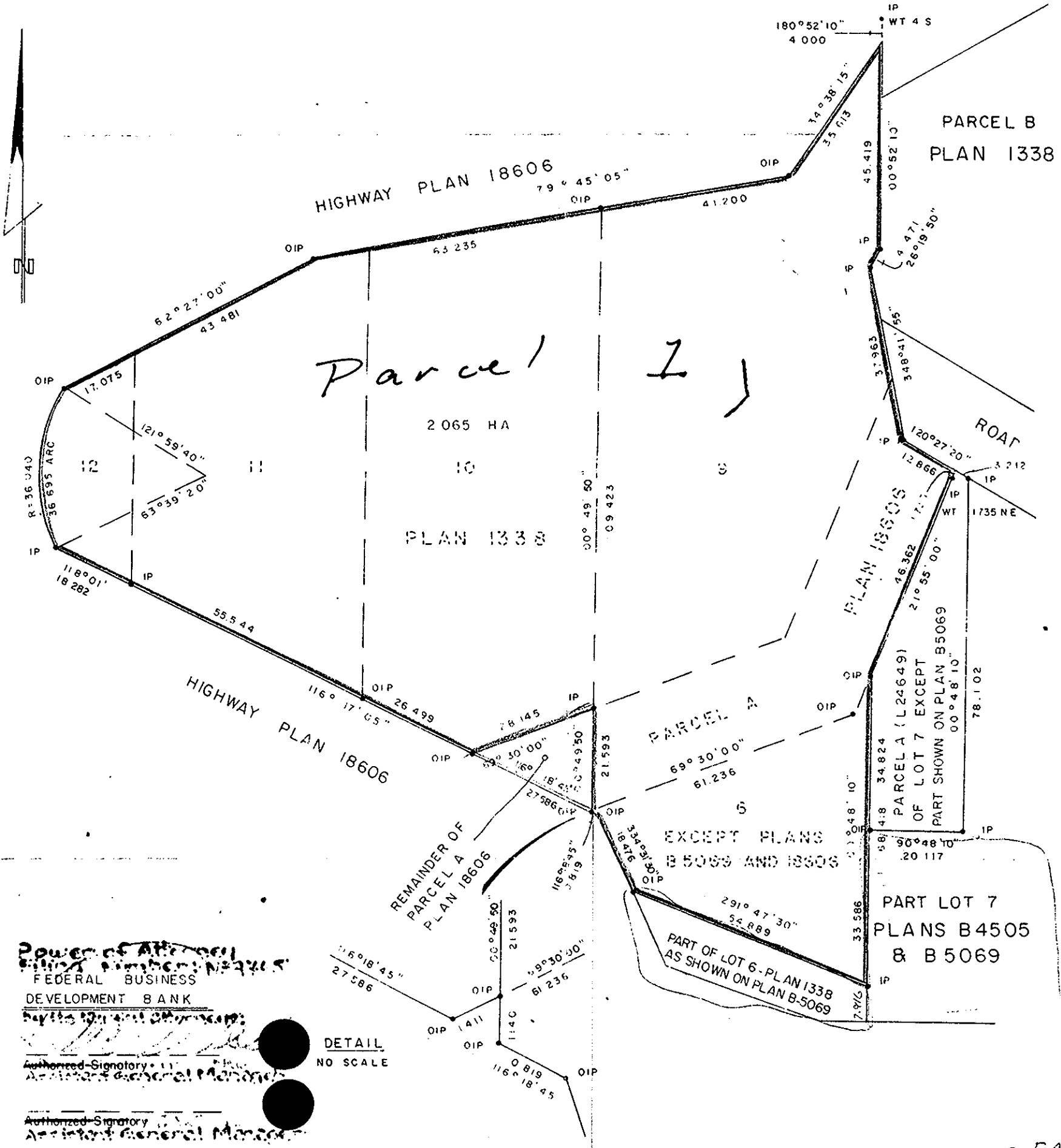
NOTE: Bearings are astronomic, derived from the east
 boundary of Lot 6, Plan 1338 as shown on Plan 18606.

LEGEND: ● OIP denotes an old iron pin found.
 ● IP denotes an iron pin set.
 WT denotes witness.

PLAN No 28099

Deposited in the Land Title
 Office at Prince George, B.C. this
8 day of Feb., 1982.

E. J. R.
 Registrar



Power of Attorney
 FEDERAL BUSINESS
 DEVELOPMENT BANK
 Assistant General Manager
 Authorized Signatory
 Assistant General Manager

DETAIL
 NO SCALE

I, DONALD A. DUFFY, a British Columbia Land
 Surveyor, of Prince George, in British Columbia,
 certify that I was present at and did personally
 superintend the survey represented by this plan,
 and that the survey and plan are correct. The
 survey was completed on the 18 day of July,
 1982.

CATRE INDUSTRIES LTD

[Signature]
 Authorized Signatory
[Signature]
 Authorized Signatory

90-25008-000/1
 90-25006-000/5

This plan lies within the Fraser-Fort George
 Regional District.

W. D. USHER & ASSOCIATES
 LAND SURVEYORS
 PRINCE GEORGE - B. C.
 MO 11496 A