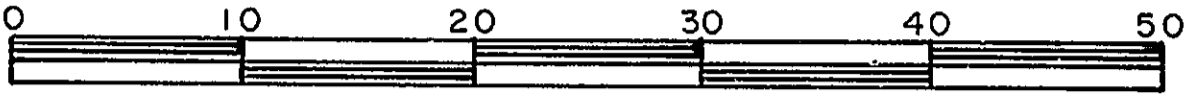


26-226

REFERENCE PLAN OF  
STATUTORY RIGHT-OF-WAY FOR MUNICIPAL PURPOSES  
THROUGH LOT 100, PLAN 22369  
DISTRICT LOT 2433  
CARIBOO DISTRICT — BRITISH COLUMBIA

SCALE: 1 : 500



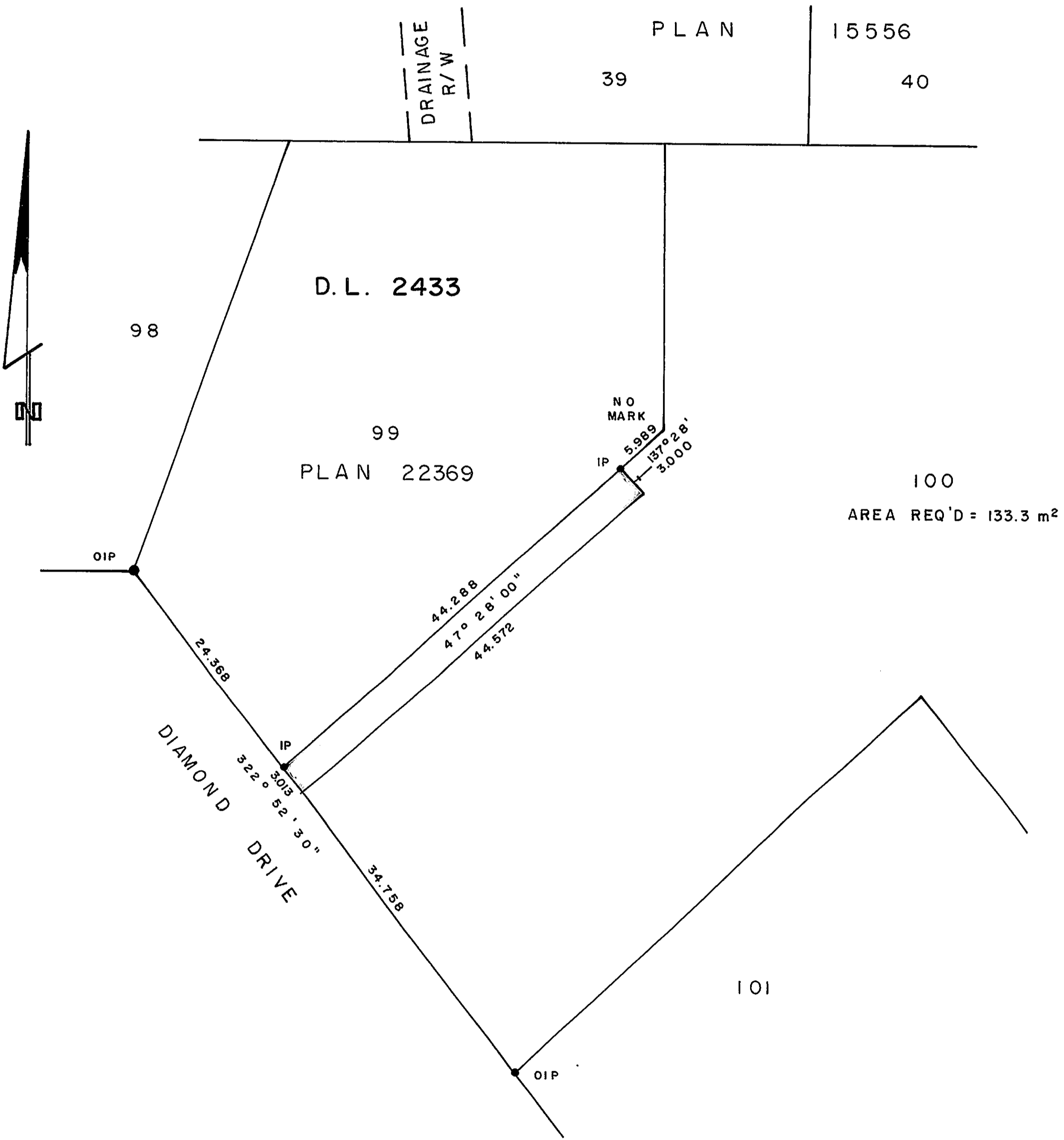
NOTE: Bearings are astronomic, derived from the  
southwesterly boundary of Lots 99 & 100, Plan 22369.

LEGEND: ● OIP denotes an old iron pin found.  
● IP denotes an iron pin set.

PLAN No 28057

Deposited in the Land Title  
Office at Prince George, B.C. this  
21st day of January, 1982.

Registrar *E. P. Raven*



I, DONALD A. DUFFY, a British Columbia Land  
Surveyor, of Prince George, in British Columbia,  
certify that I was present at and did personally  
superintend the survey represented by this plan,  
and that the survey and plan are correct. The  
survey was completed on the 14 day of JAN.,  
1982.

This plan lies within the Fraser- Fort George  
Regional District.

W. D. USHER & ASSOCIATES  
LAND SURVEYORS  
PRINCE GEORGE — B.C.  
L Q 65-66 13177