

PLAN OF SUBDIVISION OF  
 LOT 1, PLAN 15238  
 DISTRICT LOT 633  
 CARIBOO DISTRICT — BRITISH COLUMBIA

SCALE: 1 : 500



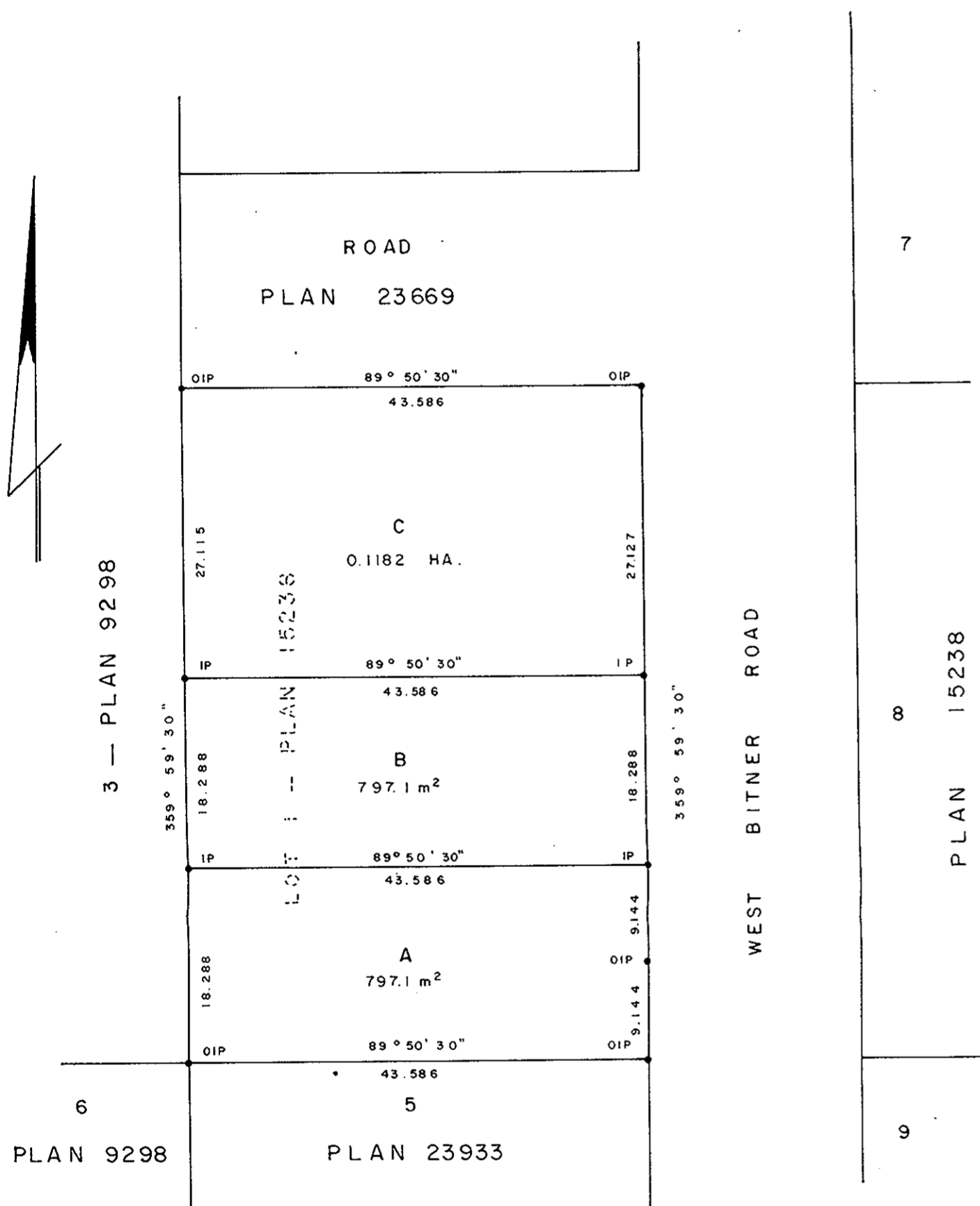
NOTE: Bearings are astronomic, derived from the east boundary of Lot 1, Plan 15238.

LEGEND: • OIP denotes an old iron pin found.  
 • IP denotes an iron pin set.

PLAN N<sup>o</sup> 28041

Deposited in the Land Title Office at Prince George, B.C. this 15 day of Jan, 1982.

E.S. P.  
 Registrar



Approved under the Land Title Act  
 this 13th day of August, 1981

I, DONALD A. DUFFY, a British Columbia Land Surveyor, of Prince George, in British Columbia, certify that I was present at and did personally superintend the survey represented by this plan, and that the survey and plan are correct. The survey was completed on the 31st day of July, 1981.

Owner [Signature]

Witness [Signature]

Colin S. Wray  
 Approving Officer, City of Prince George  
 Reapproved Nov. 30, 1981  
E. E. East

This plan lies within the Fraser-Fort George Regional District

W. D. USHER & ASSOCIATES  
 LAND SURVEYORS  
 PRINCE GEORGE — B.C.

OJ 38 12 980