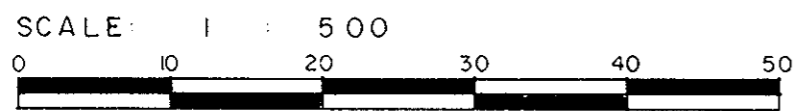


PLAN OF SUBDIVISION OF
 LOT 1, PLAN 23110 &
 PART OF LOT 2, PLAN 26327
 DISTRICT LOT 4040
 CARIBOO DISTRICT - BRITISH COLUMBIA



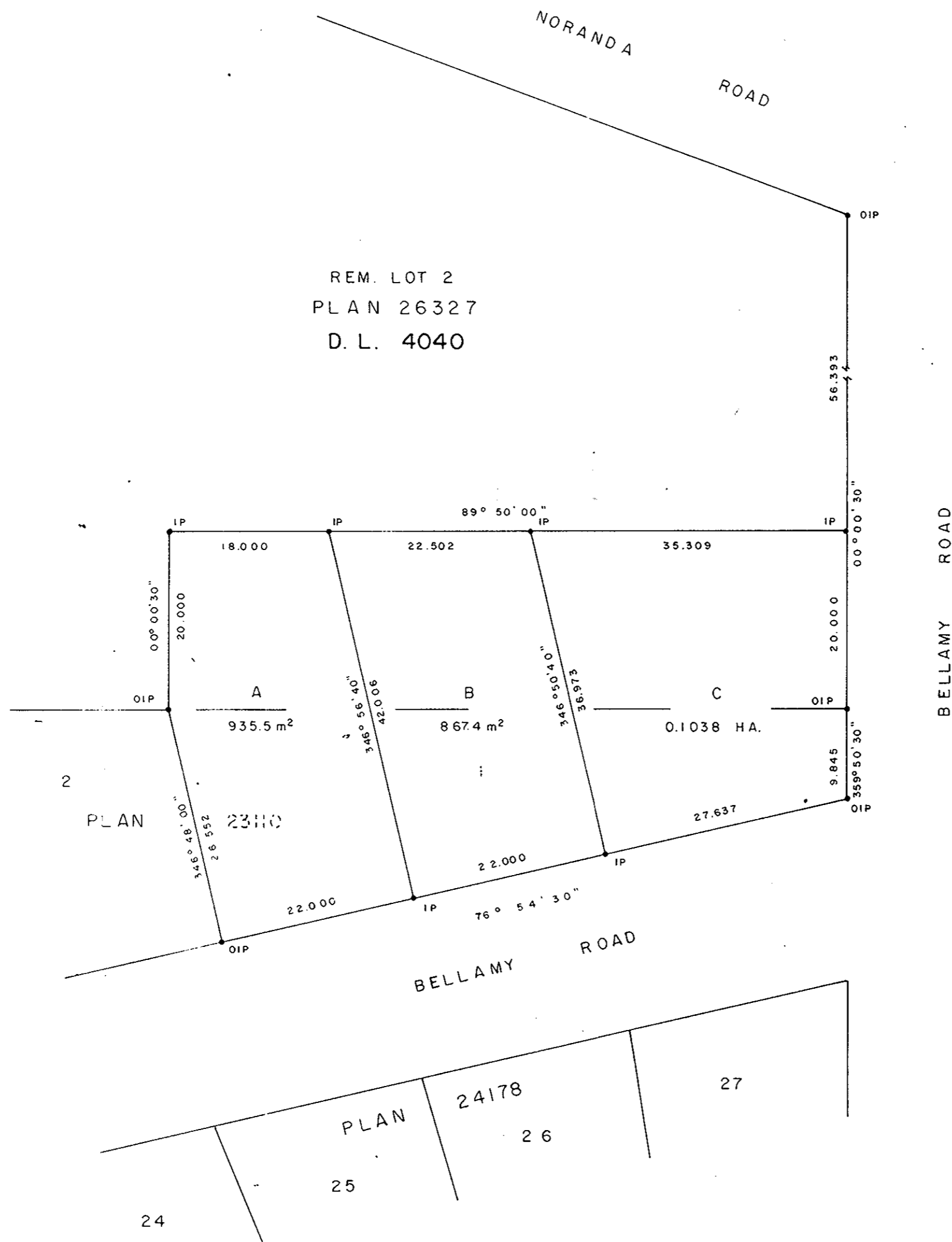
NOTE: Bearings are astronomic, derived from the south boundary of Lot 1, Plan 23110.

LEGEND: • OIP denotes an old iron pin found.
 • IP denotes an iron pin set.

PLAN No **28003**

Deposited in the Land Title Office at Prince George, B.C. this 31st day of December, 1981.

Registrar E. J. Raven



N. W. 1/4 D. L. 4041

"The Registered Owners designated hereon hereby Declare that they have entered into a condition or covenant with the City of Prince George under Section 215 of The Land Title Act."

I, DONALD A. DUFFY, a British Columbia Land Surveyor, of Prince George, in British Columbia, certify that I was present at and did personally superintend the survey represented by this plan, and that the survey and plan are correct. The survey was completed on the 27th day of October, 1981.

RAINBOW VENTURES LTD.

Authorized Signatory

Authorized Signatory

Approved under the Land Title Act this 8 day of DEC, 1981.

CRD
 Approving Officer, City of Prince George

This plan lies within the Fraser-Fort George Regional District.

W.D. USHER & ASSOCIATES
 LAND SURVEYORS
 PRINCE GEORGE - B.C.
 NW 72 12574