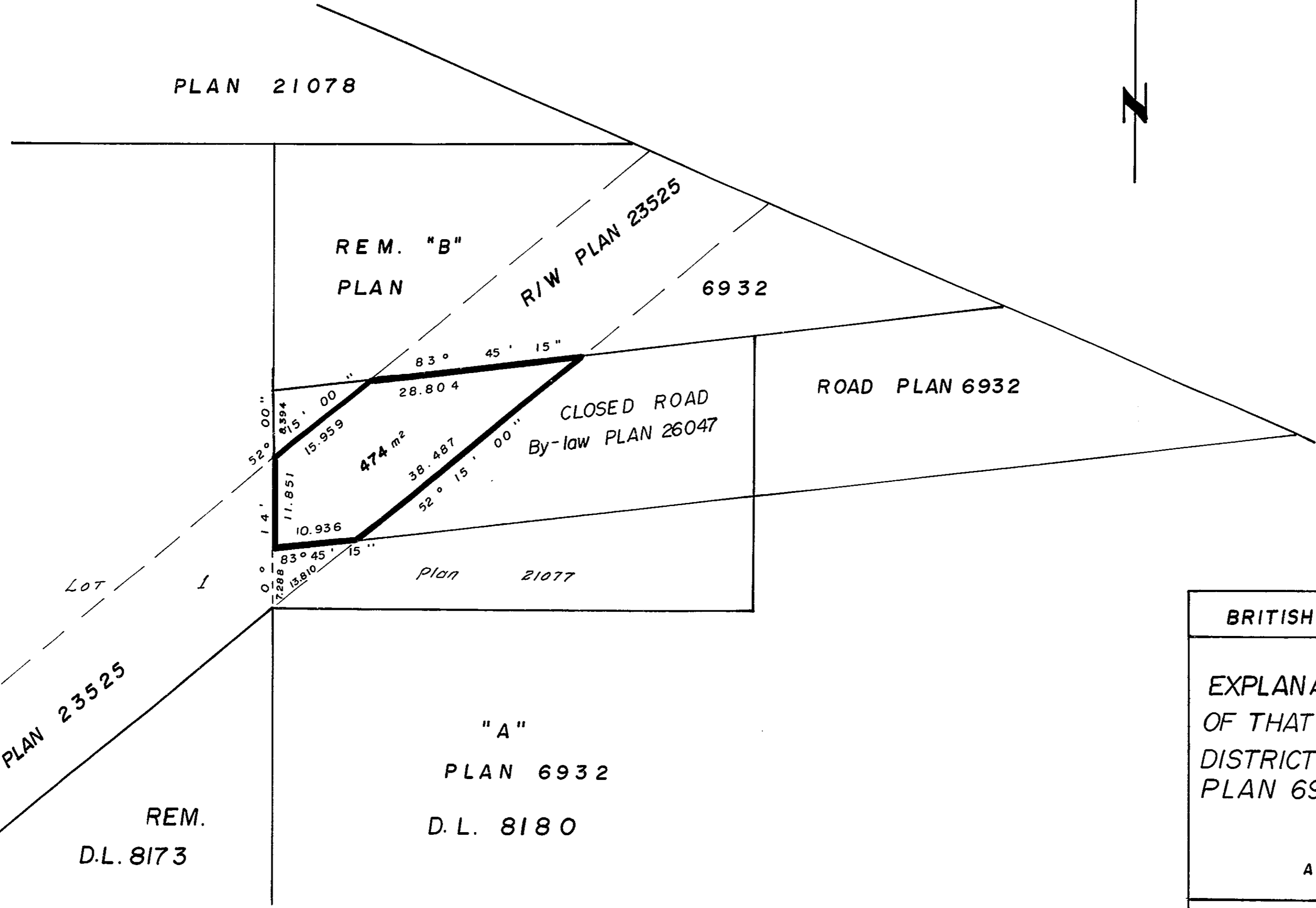


26-226

PLAN NO. 27995  
 DEPOSITED IN THE LAND TITLE OFFICE AT  
 PRINCE GEORGE THIS 30 DAY OF December, 1984.

E. J. RAVEN  
 REGISTRAR



BRITISH COLUMBIA HYDRO and POWER AUTHORITY

EXPLANATORY PLAN of STATUTORY RIGHT-of-WAY  
 OF THAT PORTION OF CLOSED ROAD (PLAN 26047)  
 DISTRICT LOT 8180, CARIBOO DISTRICT.  
 PLAN 6932.

SCALE : 1 : 500   
 ALL DISTANCES ARE IN METRES.

CERTIFIED CORRECT  
 ACCORDING TO LAND TITLE OFFICE RECORDS  
 THIS 23<sup>rd</sup> DAY OF SEPTEMBER, 1981.

Victor Barwell  
 V. B ARTELL, B.C.L.S.

BOOK OF REFERENCE	
DESCRIPTION	AREA
That portion of Closed Road (Pl. 26047) D.L. 8180, Cariboo District, Plan 6932.	474 m <sup>2</sup>

THIS PLAN LIES WITHIN THE FRASER  
 FORT GEORGE REGIONAL DISTRICT.

McWILLIAM,WHYTE,GOBLE, & ASSOCIATES,  
 B.C. LAND SURVEYORS,  
 PRINCE GEORGE - KAMLOOPS - SMITHERS - SALMON ARM

REF. NO. 80140 D.L. 8180