

26-226

REFERENCE PLAN OF EASEMENT  
IN LOTS A and B, PLAN 27987  
D.L. 8170, CARIBOO DISTRICT.

SCALE : 1 : 500

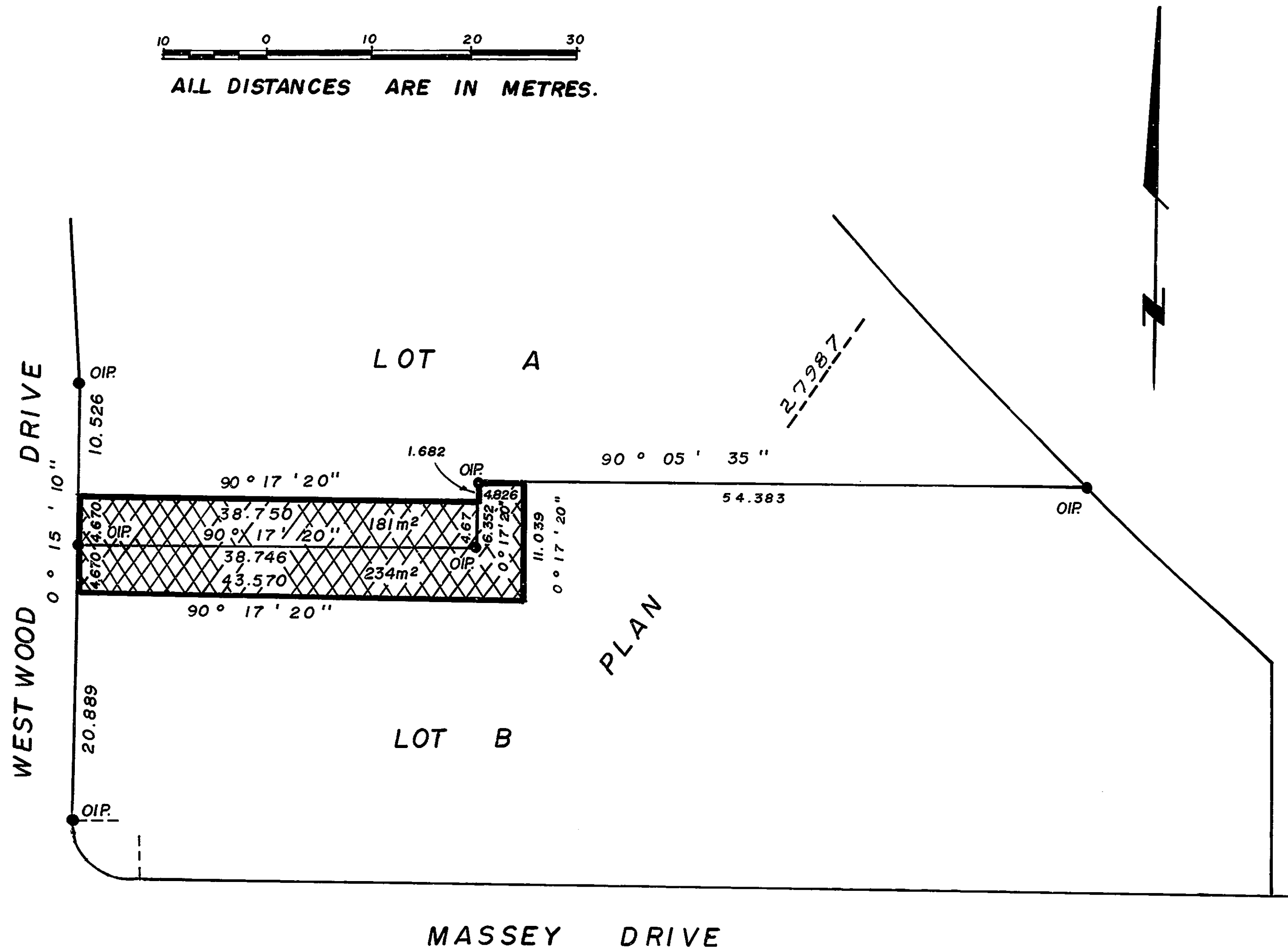


ALL DISTANCES ARE IN METRES.

PLAN NO. 27988

Deposited in the Land Title Office at Prince George  
this 22<sup>nd</sup> day of December 1981.

"E. J. Rosen" *per*  
Registrar



Bearings are astronomic derived from  
Plan 27987.

● IP.....Standard Iron Post.  
○.....Denotes "old"

I, V. Bartell, a British Columbia land surveyor of  
Prince George in British Columbia, certify that  
I was present at and personally superintended  
the survey represented by this plan and that  
the survey and plan are correct. The survey  
was completed on the 2<sup>th</sup> day of October 1981.

*V. Bartell*  
V. Bartell, B.C.L.S.

BOOK OF REFERENCE		
LOT A	PLAN <u>27987</u>	181 m <sup>2</sup>
LOT B	PLAN <u>27987</u>	234 m <sup>2</sup>

McWILLIAM, WHYTE, GOBLE, & ASSOCIATES,  
B.C. LAND SURVEYORS,  
PRINCE GEORGE-KAMLOOPS-SMITHERS-SALMON ARM.

REF. NO. 81202

DL 2/92

V