

(17K)
PLOTTED

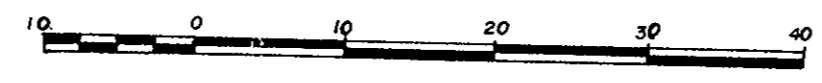
PLAN 27987

Deposited in the Land Title Office
at Prince George, B.C.
on the 25 day of Dec 1981.

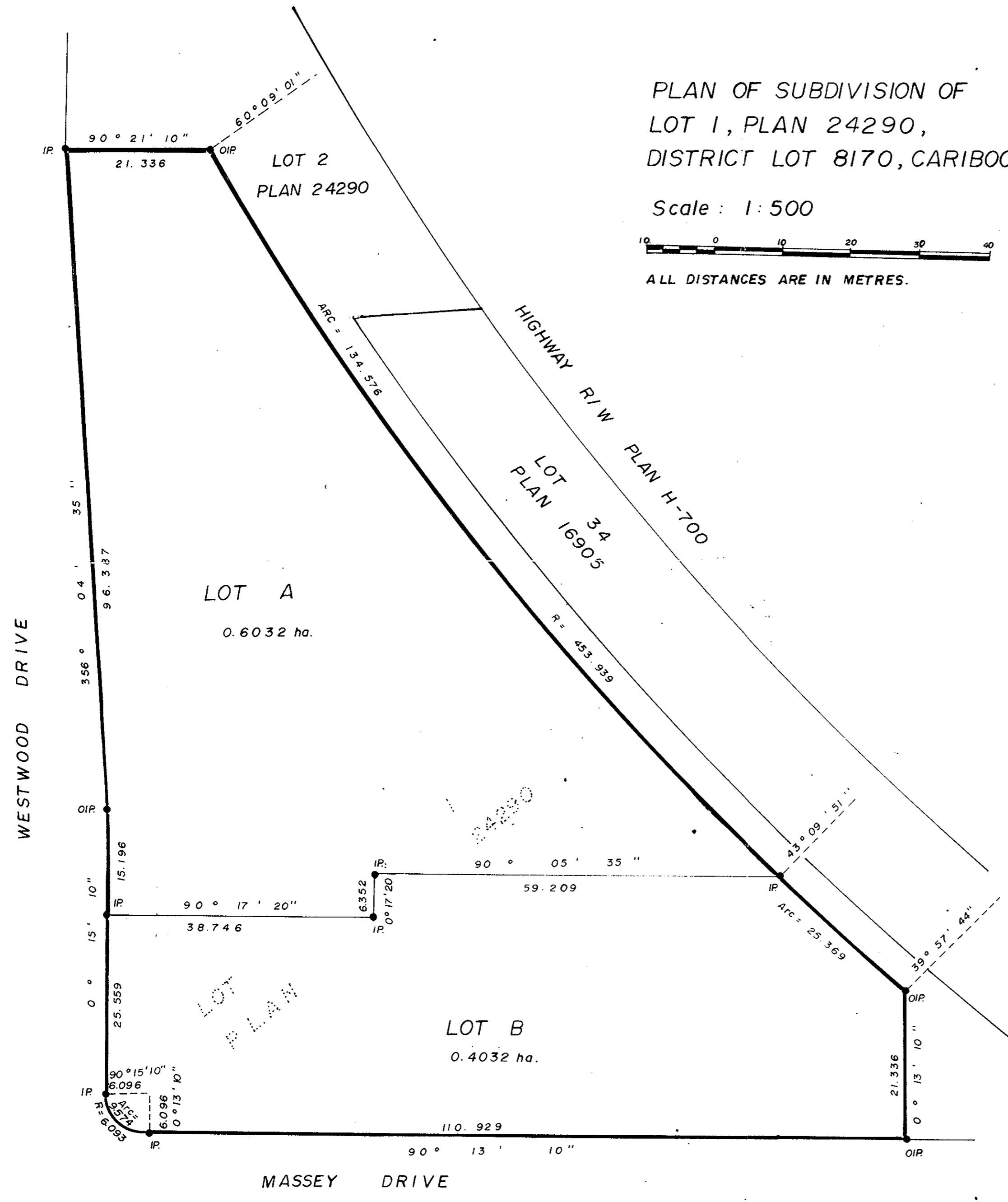
[Signature]
Registrar

PLAN OF SUBDIVISION OF
LOT 1, PLAN 24290,
DISTRICT LOT 8170, CARIBOO DISTRICT.

Scale: 1:500



ALL DISTANCES ARE IN METRES.



Bearings are astronomic and are derived from
Plan 24290.

- ⊙ P.con. Standard Concrete Post.
- ⊙ P.Rock Standard Rock Post.
- P.P. Standard Pipe Post.
- I.P. Standard Iron Post.
- P. Wooden Post.
- L.P. Lead Plug.
- Denoting "Old"
- WT. Denoting "Witness"
- C.I.P. Capped Iron Post.
- T.H. Traverse Hub.

I, V. Bartell, a British Columbia
land surveyor, of Prince George
in British Columbia, certify that I was present
at and personally superintended the survey
represented by this plan, and that the survey
and plan are correct. The survey was completed
on the 9th day of October 1981.

[Signature]
V. Bartell B.C.L.S.

Approved under the Land Title Act on
the 3rd day of Dec 1981.

[Signature]
Approving Officer
City of Prince George

This Plan lies within the Fraser Fort George
Regional District

KEPI PROPERTIES LTD. (INCORP # 178395)

[Signature]
Authorized Signatory PRESIDENT

[Signature]
Authorized Signatory

McWilliam-Whyte-Gable & Associates
B.C. Land Surveyors
Kamloops-Prince George-Salmon Arm-Smithers
FB/P DL 8170 File No. 81202