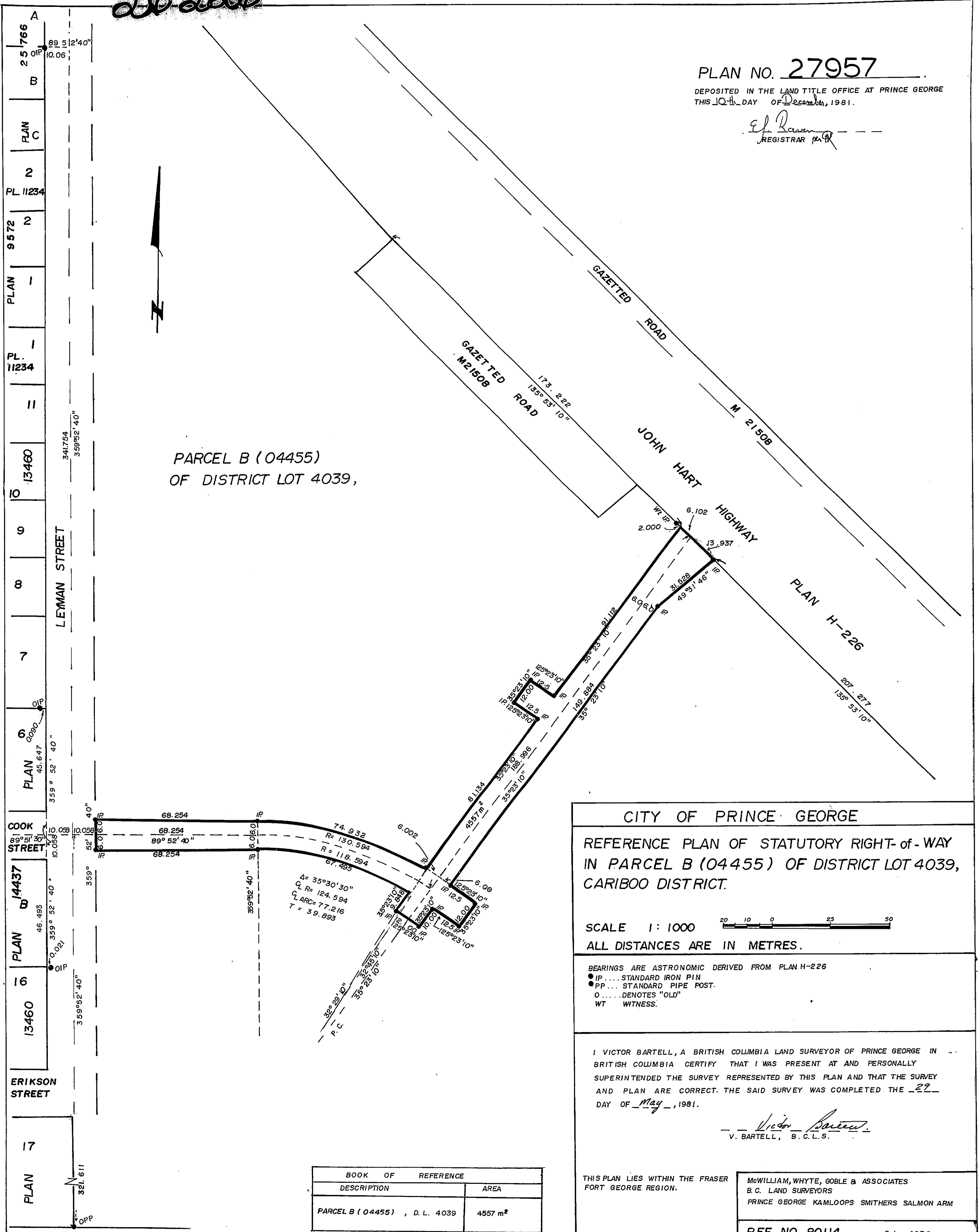


26-226



CITY OF PRINCE GEORGE

REFERENCE PLAN OF STATUTORY RIGHT-OF-WAY
 IN PARCEL B (04455) OF DISTRICT LOT 4039,
 CARIBOO DISTRICT.

SCALE 1:1000
 ALL DISTANCES ARE IN METRES.

BEARINGS ARE ASTRONOMIC DERIVED FROM PLAN H-226
 ● IP ... STANDARD IRON PIN
 ● PP ... STANDARD PIPE POST.
 O ... DENOTES "OLD"
 WT WITNESS.

I VICTOR BARTELL, A BRITISH COLUMBIA LAND SURVEYOR OF PRINCE GEORGE IN
 BRITISH COLUMBIA CERTIFY THAT I WAS PRESENT AT AND PERSONALLY
 SUPERINTENDED THE SURVEY REPRESENTED BY THIS PLAN AND THAT THE SURVEY
 AND PLAN ARE CORRECT. THE SAID SURVEY WAS COMPLETED THE 29
 DAY OF May, 1981.

Victor Bartell
 V. BARTELL, B. C. L. S.

THIS PLAN LIES WITHIN THE FRASER
 FORT GEORGE REGION.

McWILLIAM, WHYTE, GOBLE & ASSOCIATES
 B. C. LAND SURVEYORS
 PRINCE GEORGE KAMLOOPS SMITHERS SALMON ARM

REF. NO. 80114 D.L. 4039