

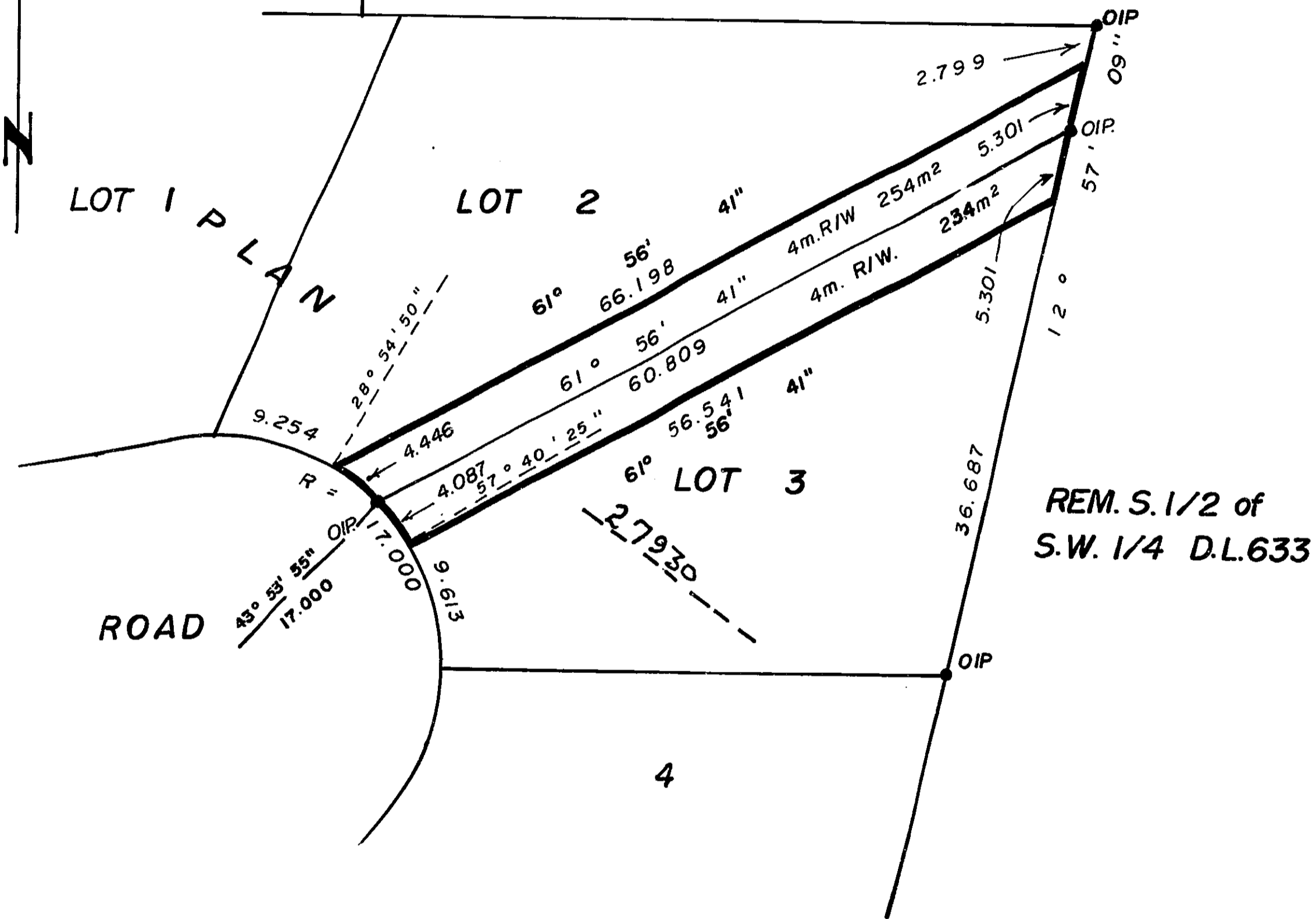
26-226

REM. S. 1/2
of S.W. 1/4 D.L. 633

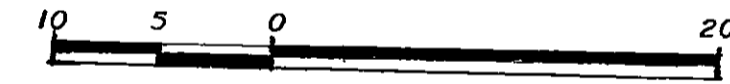
PLAN NO. 27931

Deposited in the Land Title Office at
Prince George this 4th day of December 1981.

--- "E.J. Rankin" P.E. ---
Registrar



PLAN OF STATUTORY RIGHT of WAY
IN LOTS 2 and 3, PLAN 27930 ,
DISTRICT LOT 633, CARIBOO DISTRICT.
SCALE: 1: 500



All distances are in metres.

Bearings are astronomic derived from
Plan 27930 .

- IP.....Standard Iron Post.
- O.....Denotes "old"

I V. Bartell a British Columbia Land Surveyor
of Prince George in British Columbia certify
that I was present at and personally superintended the
survey represented by this plan and that the survey
and plan are correct. The said survey was
completed on the 28 day of August 1981.

--- V. Bartell ---
V. Bartell, B.C.L.S.

BOOK OF REFERENCE	
Description	Area
Lot 2, Plan <u>27930</u> ,	254 m ²
Lot 3, Plan <u>27930</u> ,	235 m ²

This plan lies within the Fraser Fort
George Regional District.

McWilliam, Whyte, Goble, & Associates,
B.C. Land Surveyors,
Prince George - Kamloops - Smithers - Salmon Arm.

REF. NO. 81035. (D.L. 633)