

26-226

PLAN OF EASEMENT THROUGH
 LOT 1, PLAN 11926 & LOTS 12 TO 15 INCLUSIVE, PLAN 27675
 DISTRICT LOT 4039
 CARIBOO DISTRICT — BRITISH COLUMBIA

SCALE: 1 : 500



NOTE: Bearings are astronomic, derived from Plan 27675

LEGEND: •OIP denotes an old iron pin found.
 •IP denotes an iron pin set.

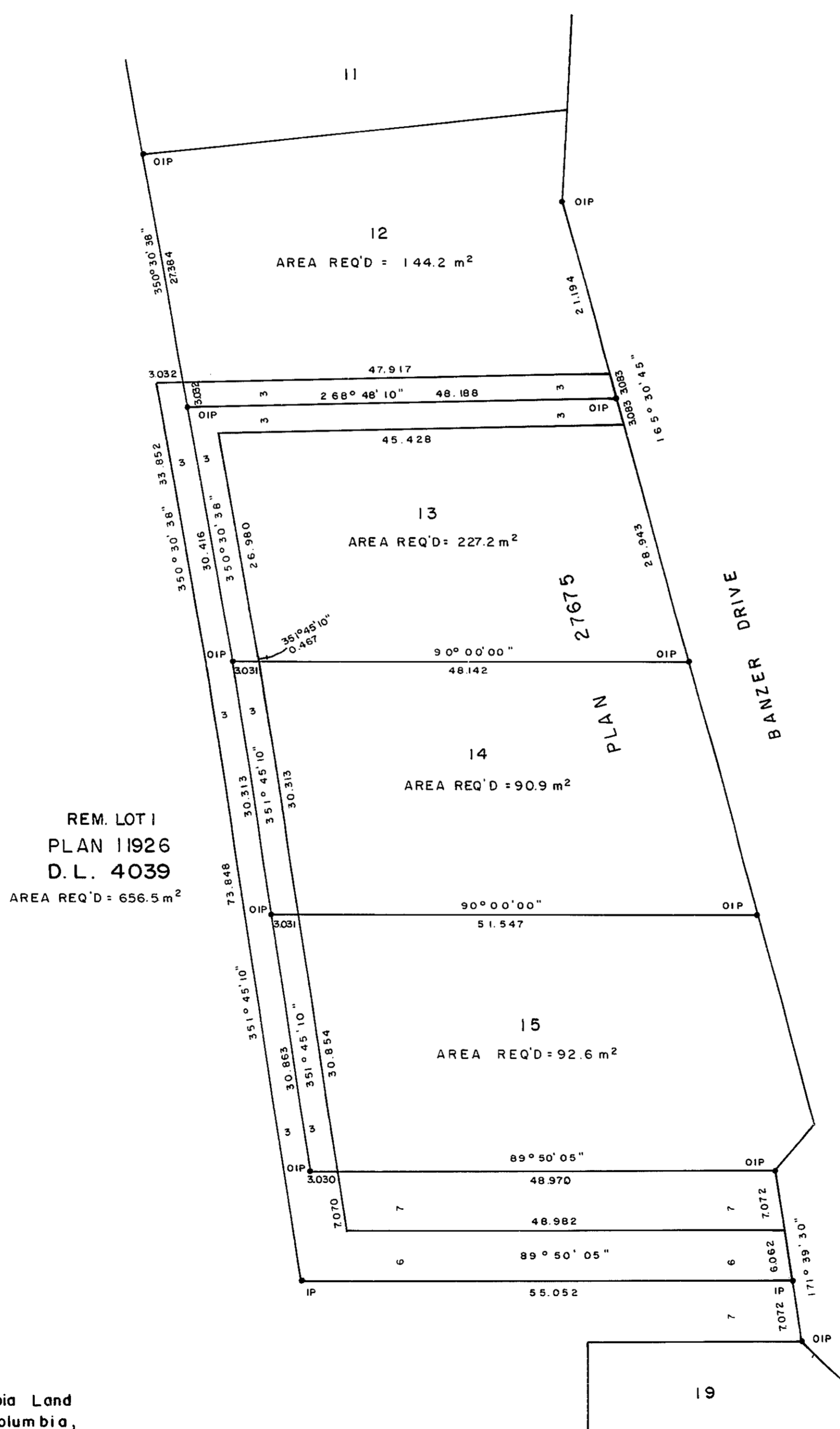
PLAN N^o 27839

Deposited in the Land Title
 Office at Prince George, B.C. this
 02 day of Nov., 1981.

Registrar *E. J. Raven*
 per: *Ep.*

BOOK OF REFERENCE

PARCEL	AREA REQ'D
REM. LOT 1, PLAN 11926	656.5 m ²
LOT 12, PLAN 27675	144.2 m ²
LOT 13, PLAN 27675	227.2 m ²
LOT 14, PLAN 27675	90.9 m ²
LOT 15, PLAN 27675	92.6 m ²



I, DONALD A. DUFFY, a British Columbia Land Surveyor, of Prince George, in British Columbia, certify that I was present at and did personally superintend the survey represented by this plan, and that the survey and plan are correct. The survey was completed on the 22nd day of October, 1981.

[Signature]

This plan lies within the Fraser-Fort George Regional District.