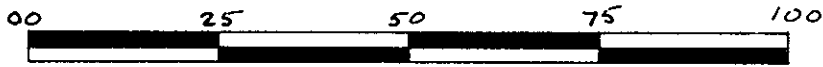


PLAN OF SUBDIVISION OF PART OF REM. OF  
 LOT 68, PLAN 17631  
 DISTRICT LOT 8174  
 CARIBOO DISTRICT—BRITISH COLUMBIA  
 SCALE: 1 : 1000

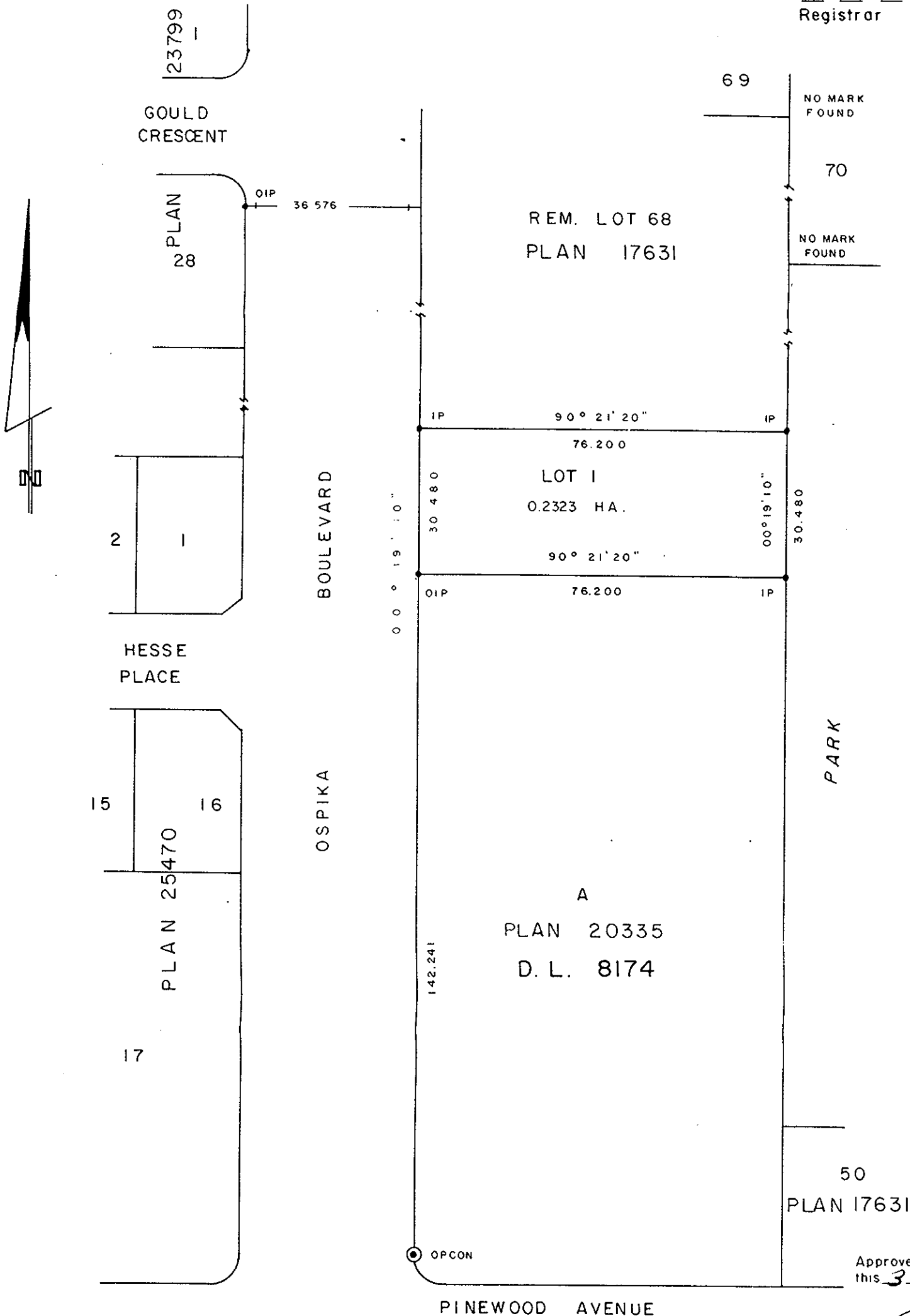


NOTE: Bearings are astronomic, derived from the west boundary of Lot A, Plan 20335.

LEGEND:  $\odot$  OPCON denotes an old concrete monument found.  
 • OIP denotes an old iron pin found.  
 • IP denotes an iron pin set.

PLAN No 27831  
 Deposited in the Land Title Office at Prince George, B.C. this 06 day of Nov., 1981.

E. J. Raven  
 Registrar



I, DONALD A. DUFFY, a British Columbia Land Surveyor, of Prince George, in British Columbia, certify that I was present at and did personally superintend the survey represented by this plan, and that the survey and plan are correct. The survey was completed on the 26 day of APRIL, 1981.

PINWOOD AVENUE

CITY OF PRINCE GEORGE

Mayor

Clerk

Approved under the Land Title Act this 3 day of SEPT., 1981

C. E. Olot  
 Approving Officer, City of Prince George

This plan lies within the Fraser-Fort George Regional District.

W. D. USHER & ASSOCIATES  
 LAND SURVEYORS  
 PRINCE GEORGE — B.C.