

26-226

PLAN OF SUBDIVISION OF PARTS OF
LOT 22, PLAN 15557 &
LOT A, PLAN 18034
DISTRICT LOT 936
CARIBOO DISTRICT - BRITISH COLUMBIA

SCALE: 1:500



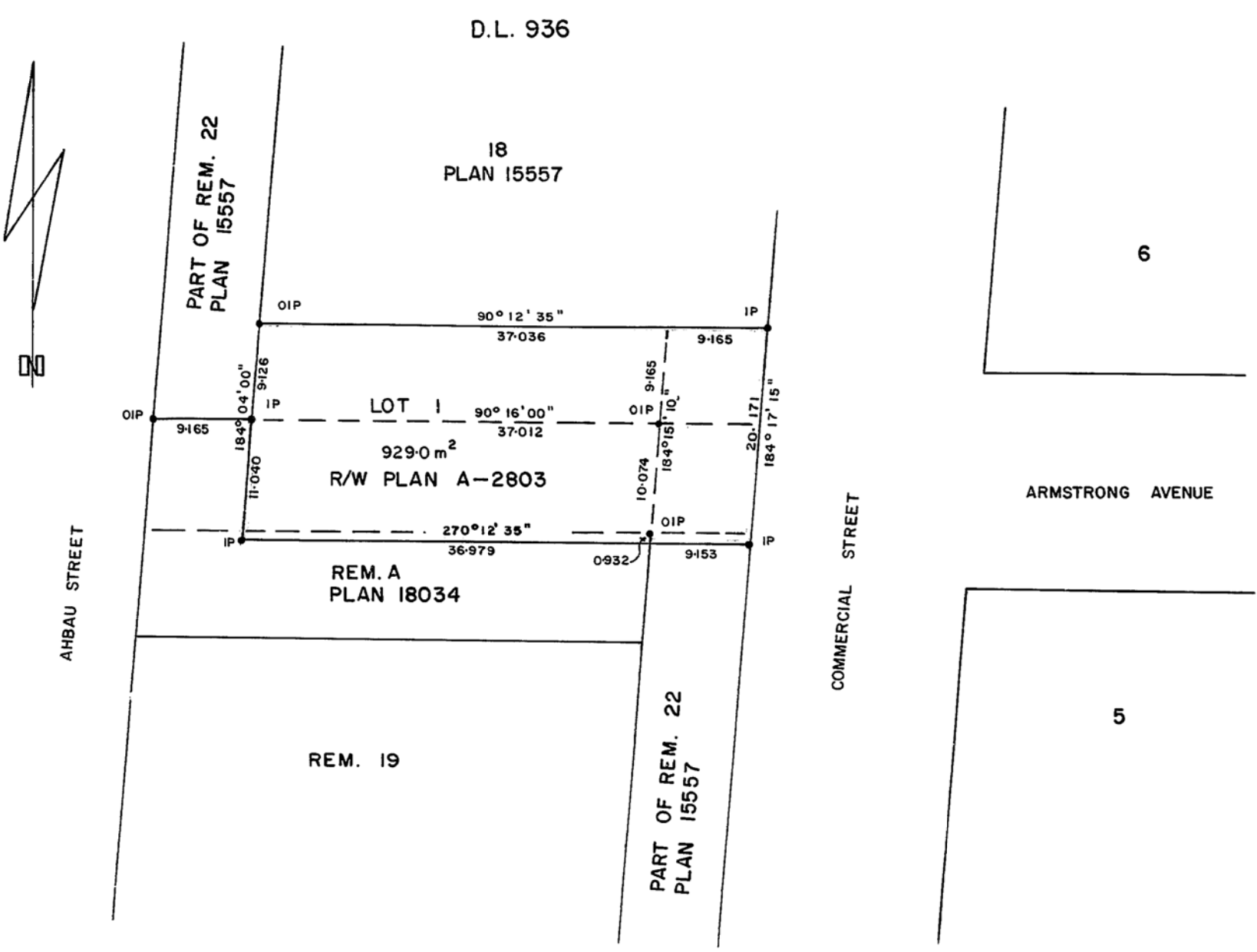
NOTE: Bearings are astronomic, derived from the north boundary of Lot A, Plan 18034.

LEGEND: ● IP denotes an iron pin set.
● OIP denotes an old iron pin found.

PLAN No 27829

Deposited in the Land Title Office at Prince George, B.C. this 6th day of NOV, 1981.

E. J. Raven --
Registrar per D.M.



PLAN 15557

D.L. 936

I, DONALD A. DUFFY, a British Columbia Land Surveyor, of Prince George, in British Columbia, certify that I was present at and did personally superintend the survey represented by this plan, and that the survey and plan are correct. The survey was completed on the 13th day of August, 1981.

CITY OF PRINCE GEORGE

Mayor

Clerk

Approved under the Land Title Act this 8 day of OCT, 1981

Approving Officer, City of Prince George

This plan lies within the Fraser-Fort George Regional District.

W. D. USHER & ASSOCIATES
LAND SURVEYORS
PRINCE GEORGE - B.C.
LY 50 12367