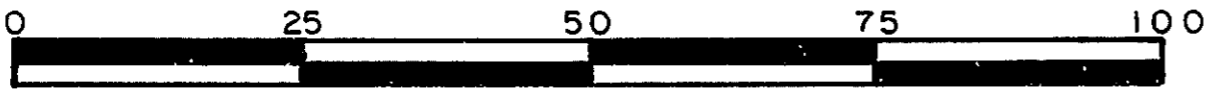


26

PLAN OF EASEMENT THROUGH
LOT 2 , PLAN 27385
DISTRICT LOT 2425
CARIBOO DISTRICT — BRITISH COLUMBIA
SCALE: 1 : 1000



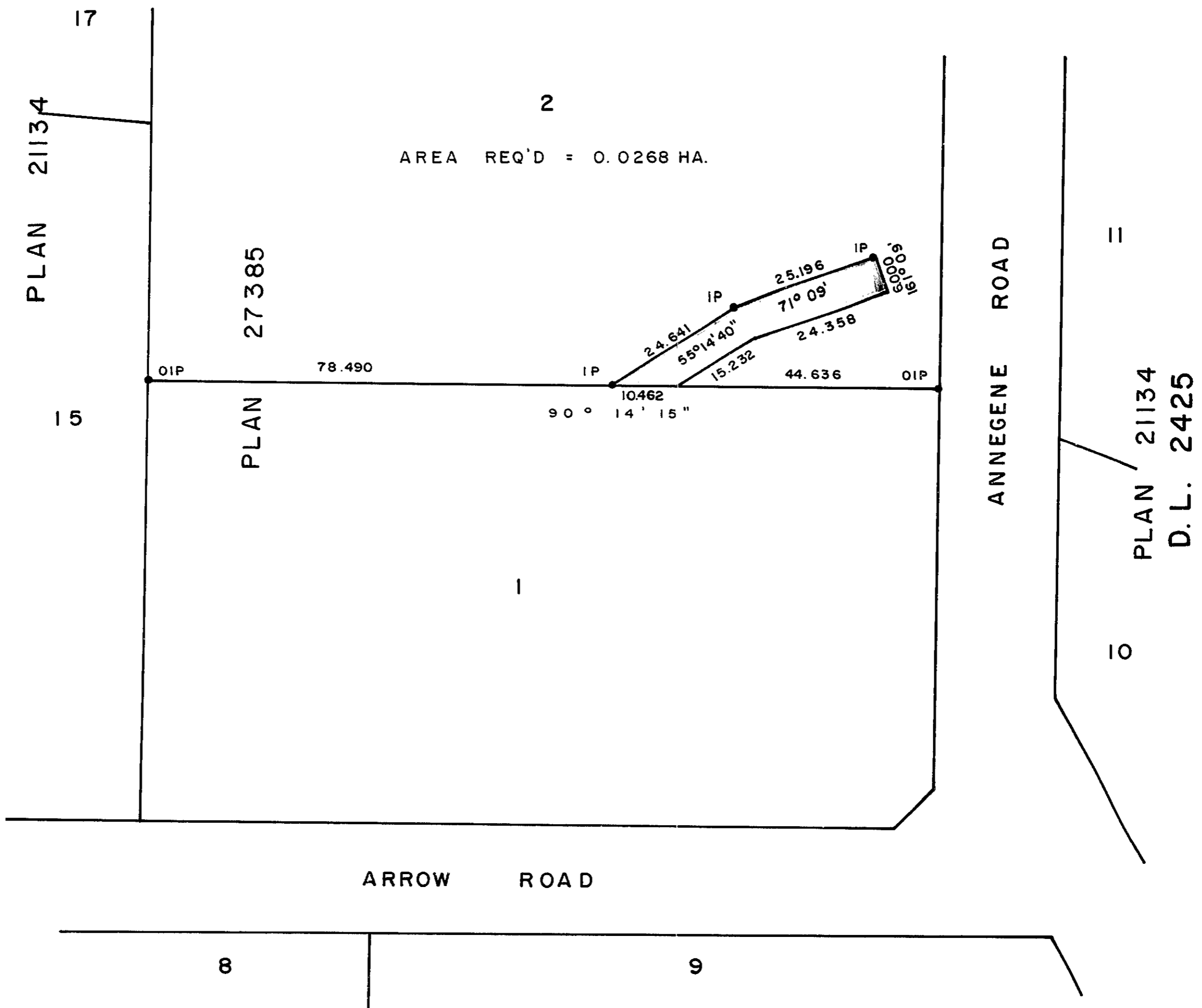
PLAN No **27809**

Deposited in the Land Title
Office at Prince George, B.C. this
4th day of November, 1981.

NOTE: Bearings are astronomic, derived from the
south boundary of Lot 2 , Plan 27385.

LEGEND: • OIP denotes an old iron pin found.
• IP denotes an iron pin set.

— "F. J. Bensen" — per se
Registrar



I, RONALD L. JOHNS, a British Columbia Land
Surveyor, of Prince George, in British Columbia,
certify that I was present at and did personally
superintend the survey represented by this plan,
and that the survey and plan are correct. The
survey was completed on the 19th day of OCT.,
1981.

R. L. Johns

This plan lies within the Fraser- Fort George
Regional District.

W. D. USHER & ASSOCIATES
LAND SURVEYORS
PRINCE GEORGE — B.C.

00 58

12100-A