

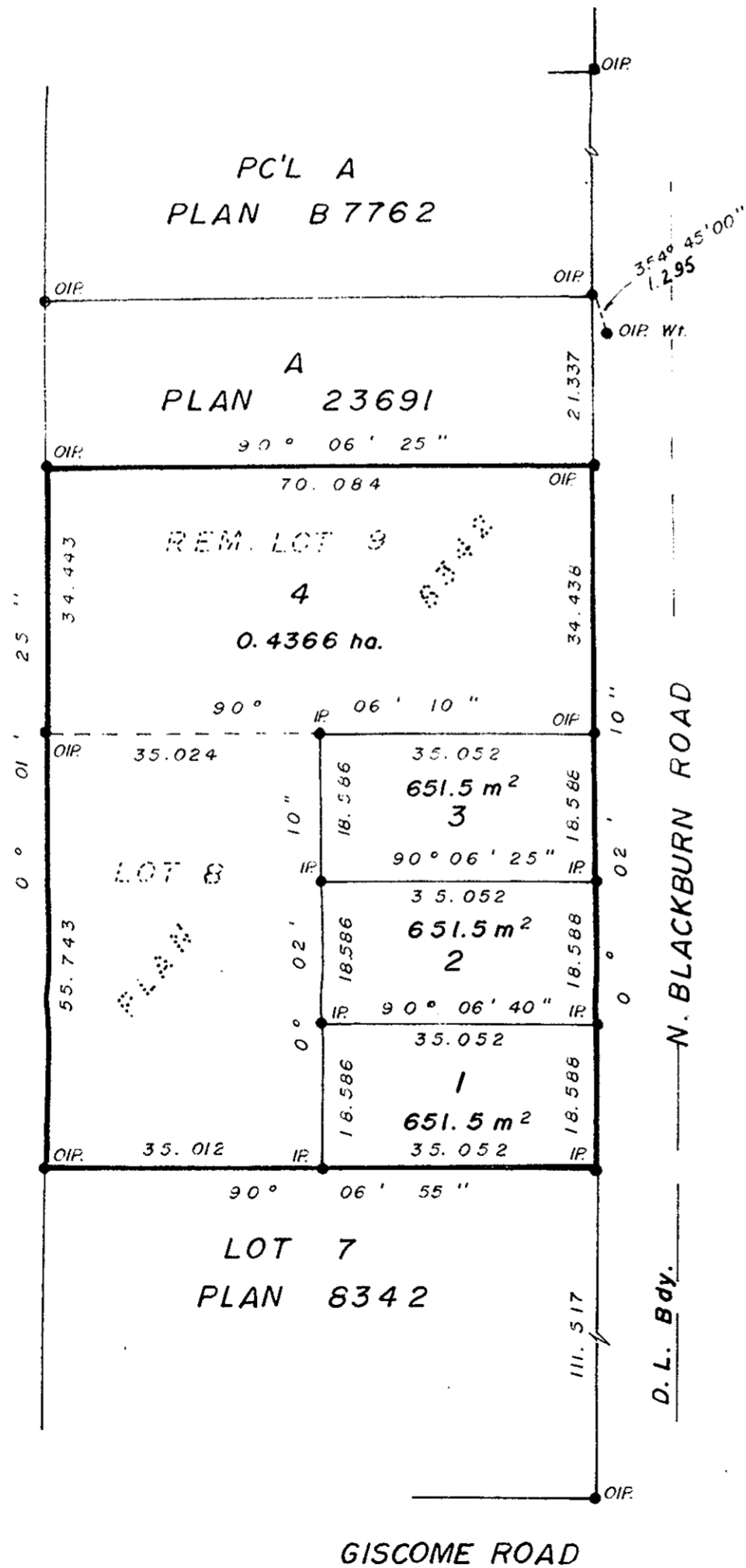
PLAN OF SUBDIVISION OF
 LOT 8 and REM. LOT 9, PLAN 8342,
 D.L. 632, CARIBOO DISTRICT.

SCALE: 1:750



ALL DISTANCES ARE IN METRES.

REM. S.E. 1/4 OF S.E. 1/4
 D. L. 632



D. L. 633

Prince George and District Credit Union

Witness

N/K PLOTTED

PLAN 27639
 Deposited in the Land Title Office
 at PRINCE GEORGE, B.C.
 on the 17 day of Sept 1981.

Registrar

Bearings are astronomic and are derived from
 Plan 23691.

- ⊙ P.con. Standard Concrete Post.
- ⊙ P.Rock Standard Rock Post.
- P.P. Standard Pipe Post.
- I.P. Standard Iron Post.
- P. Wooden Post.
- L.P. Lead Plug.
- Denoting "Old"
- WT. Denoting "Witness"
- C.I.P. Capped Iron Post.
- T.H. Traverse Hub.

I, E. Peterson, a British Columbia
 land surveyor, of Prince George,
 in British Columbia, certify that I was present
 at and personally superintended the survey
 represented by this plan, and that the survey
 and plan are correct. The survey was completed
 on the 6th day of July 1981.

E. Peterson
 E. Peterson, B.C.L.S.

Approved under the Land Title Act on
 the 22 day of July 1981.

C.E. Shott
 Approving Officer
 City of Prince George

This Plan lies within the Fraser-Fort George
 Regional District

Owners:
 Lot 8:

R. D. Downey

Witness

ADDRESS

POSTAL CODE

OCCUPATION

Owners:
 Rem. L. 9:

R. D. Downey

Witness

ADDRESS

POSTAL CODE

OCCUPATION

MCWilliam-Whyte-Goble & Associates
 B.C. Land Surveyors
 Kamloops-Prince George-Salmon Arm-Smithers
 FB/P D.L. 632 File No. 81086