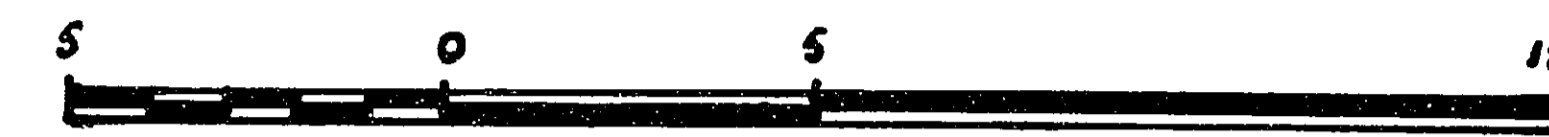


26

PLAN OF EASEMENT IN LOT 2, PLAN 27593
DISTRICT LOT 913, CARIBOO DISTRICT

SCALE: 1:250



ALL DISTANCES ARE IN METERS.

PLAN NO. 27594

Deposited in the Land Title Office
at Prince George this 4th day of
September 1981.

"E. J. Raven" per J. J. Registrar

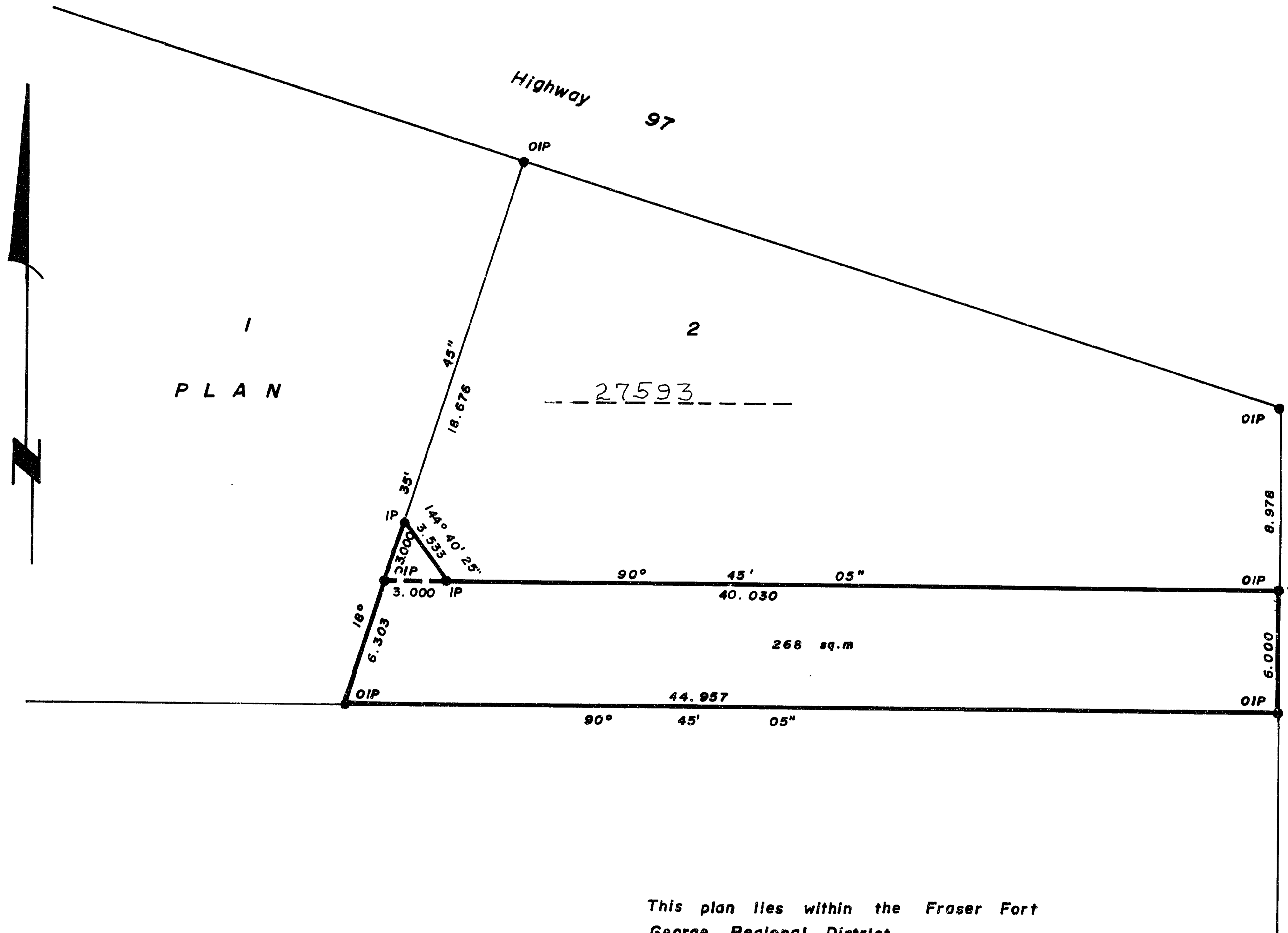
Bearings are astronomic and are derived from
Plan 27593

● IP ----- Standard Iron Post
○ ----- Denotes Old

I, GORDON KILBRIDE, a British Columbia land
surveyor of Prince George in British Columbia,
certify that I was present and personally
superintended the survey represented by this
plan, and that the survey and plan are
correct. The survey was completed on the
25 day of August 1981.

Gordon Kilbride
G. Kilbride, B.C.L.S.

PLAN



This plan lies within the Fraser Fort
George Regional District.

McWilliam, Whyte, Goble & Associates
B.C. Land Surveyors
Kamloops - Prince George - Smithers - Salmon Arm
REF. 81166-1