

PLAN TO ACCOMPANY BY-LAW No 3764
 OF THE CITY OF PRINCE GEORGE CLOSING
 ROAD ADJACENT TO LOT A, PLAN 20063
 DISTRICT LOT 8177 &
 LOT 1, PLAN 13029
 DISTRICT LOT 9265 &
 DEDICATING AS ROAD PART OF
 LOT 1, PLAN 13029
 DISTRICT LOT 9265
 CARIBOO DISTRICT— BRITISH COLUMBIA

*PLOTTED
 (GJ)(GH)*

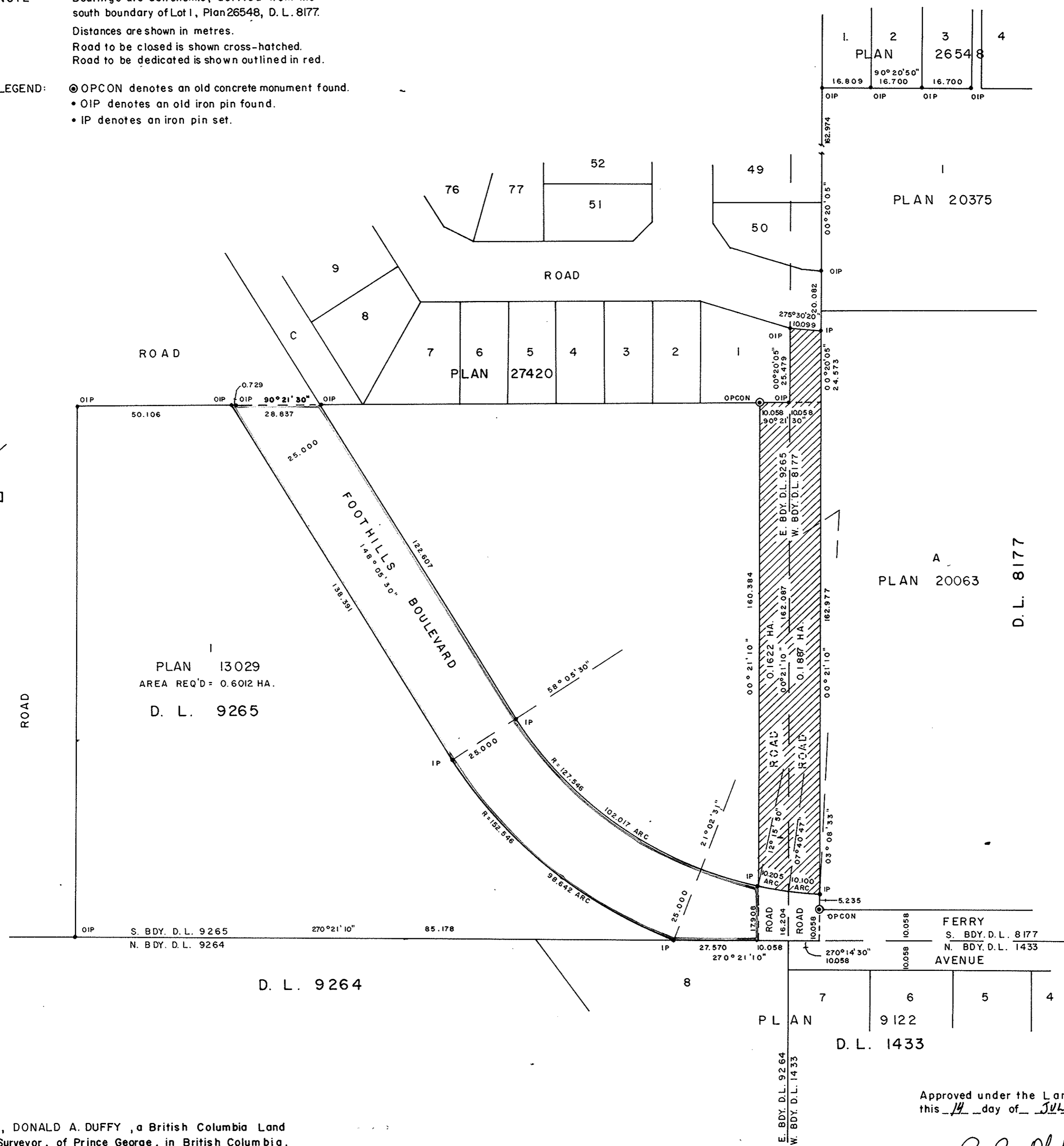
(GJ) (GH)

PLAN No 27523
 Deposited in the Land Title
 Office at Prince George, B.C. this
13 day of Aug, 1981.
 E. J. Row
 Registrar

SCALE: 1 : 1000
 0 25 50 75 100

NOTE: Bearings are astronomic, derived from the
 south boundary of Lot 1, Plan 26548, D. L. 8177.
 Distances are shown in metres.
 Road to be closed is shown cross-hatched.
 Road to be dedicated is shown outlined in red.

LEGEND: \odot OPCON denotes an old concrete monument found.
 • OIP denotes an old iron pin found.
 • IP denotes an iron pin set.



I, DONALD A. DUFFY, a British Columbia Land
 Surveyor, of Prince George, in British Columbia,
 certify that I was present at and did personally
 superintend the survey represented by this plan,
 and that the survey and plan are correct. The
 survey was completed on the 16th day of April
 1981.

Approved under the Land Title Act
 this 14 day of JULY, 1981.

C. E. Obit
 Approving Officer, City of Prince George

This plan lies within the Fraser-Fort George
 Regional District.

W.D. USHER & ASSOCIATES
 LAND SURVEYORS
 PRINCE GEORGE — B.C.
 10700 C