

Plotted

KL

REFERENCE PLAN TO ACCOMPANY  
CITY OF PRINCE GEORGE BY-LAW No 3617  
CLOSING PART OF ROAD ADJACENT TO LOTS 4, 5, 6 & 7, PLAN 15460  
AND DEDICATING AS ROAD PART OF LOTS 1, 2, 3 & 4, PLAN 15460  
DISTRICT LOT 343  
CARIBOO DISTRICT - BRITISH COLUMBIA  
SCALE: 1 : 500

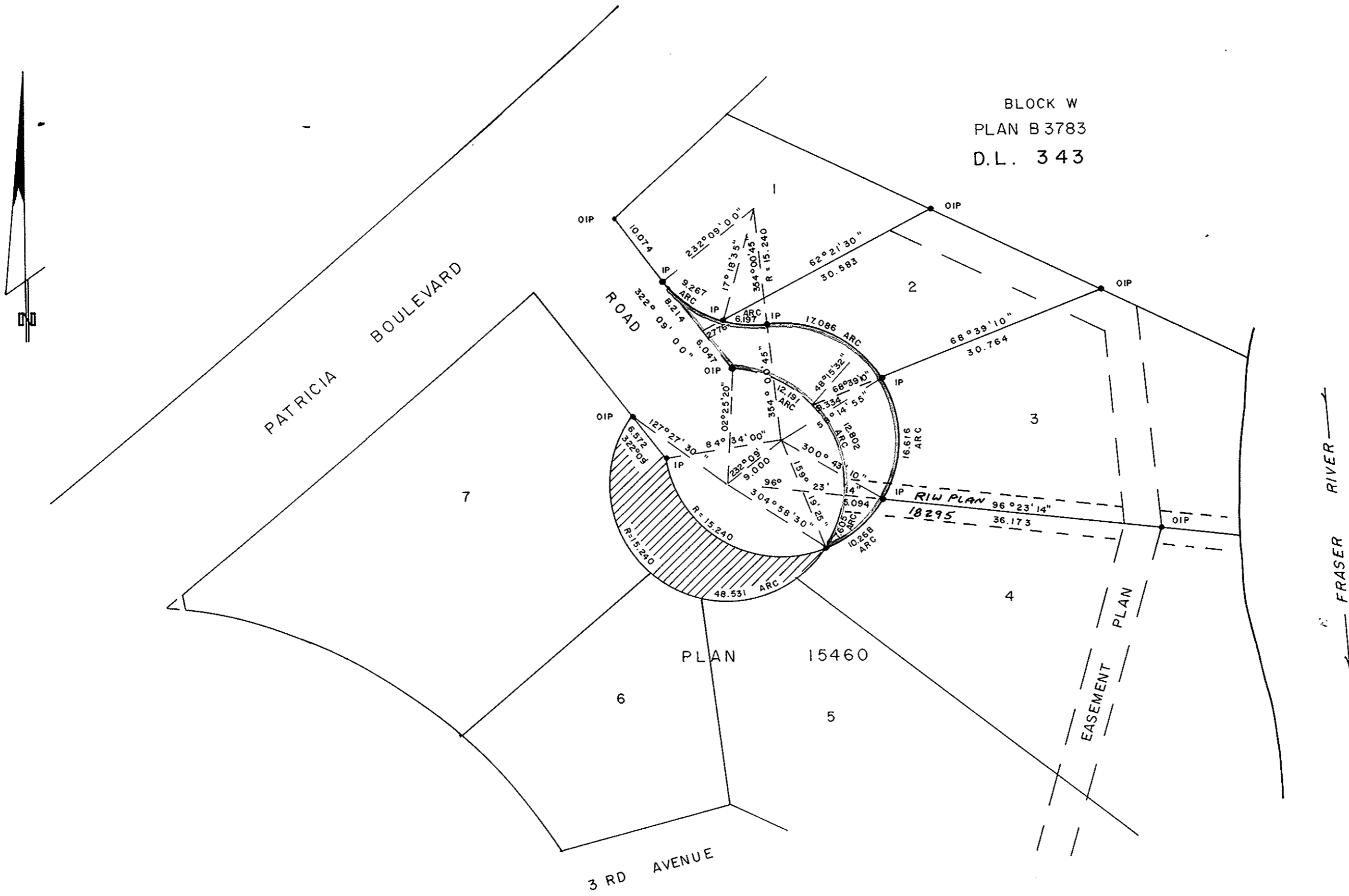
PLAN No 22504  
Deposited in the Land Title  
Office at Prince George, B.C. this  
13 day of AUGUST, 1981.

E.J. RAVEN  
Registrar

NOTE: Bearings are astronomic, derived from the  
SOUTH WESTERLY BOUNDARY OF LOTS 1 & 2, Plan 15460

LEGEND: • OIP denotes an old iron pin found.  
• IP denotes an iron pin set.

Road to be dedicated is shown outlined in red.  
Road to be closed is shown cross-hatched.



BLOCK W  
PLAN B 3783  
D.L. 343

PLAN 15460

Approved under the Land Title Act  
this 30 day of JULY, 1981.

C. E. Olt  
Approving Officer, City of Prince George

This plan lies within the Fraser-Fort George  
Regional District.

I, DONALD A. DUFFY, a British Columbia Land  
Surveyor, of Prince George, in British Columbia,  
certify that I was present at and did personally  
superintend the survey represented by this plan,  
and that the survey and plan are correct. The  
survey was completed on the 18 day of August,  
1980.

W.D. USHER & ASSOCIATES  
LAND SURVEYORS  
PRINCE GEORGE - B.C.  
11714 A