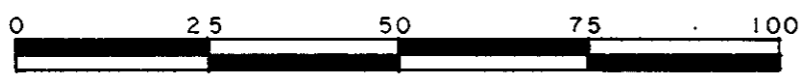


PLAN OF SUBDIVISION OF PART OF  
 PARCEL B (SEE R 12323) OF S.E. 1/4  
 DISTRICT LOT 4047  
 CARIBOO DISTRICT—BRITISH COLUMBIA

SCALE: 1 : 1000



NOTE: Bearings are astronomic, derived from the southeasterly boundary of Lot 13, Plan 27039.

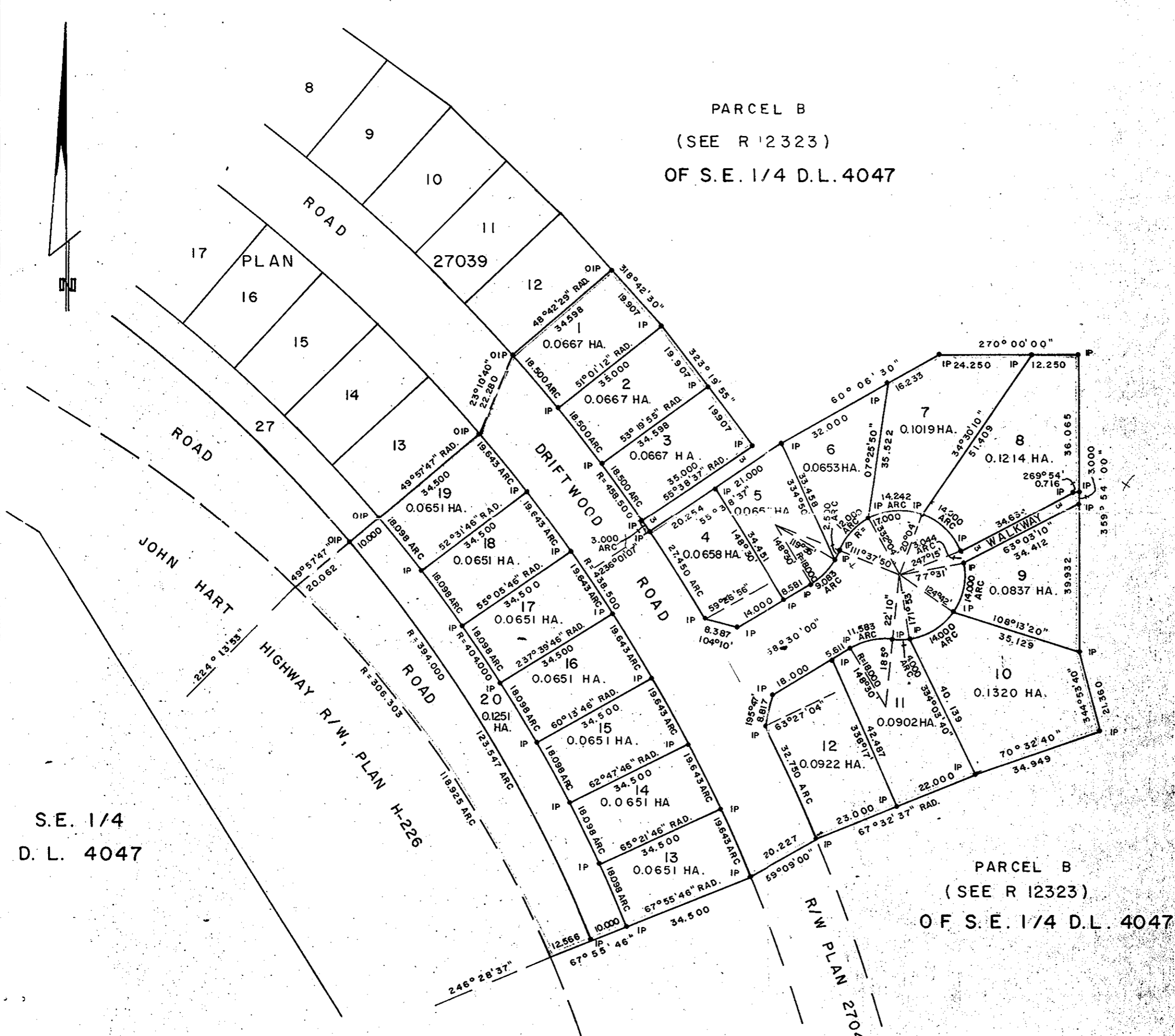
LEGEND: • OIP denotes an old iron pin found.  
 • IP denotes an iron pin set.

(HT)  
 PLOTTED

PLAN No 27508

Deposited in the Land Title Office at Prince George, B.C. this 10<sup>th</sup> day of August, 1981.

"E.S. Raven" per [Signature]  
 Registrar



S.E. 1/4  
 D. L. 4047

R/W PLAN 25204  
 S.W. 1/4 D. L. 4028

CITY OF PRINCE GEORGE

E.W. Munn Mayor  
S.D. Buchanan Clerk

MONDIAL INVESTMENTS LTD.  
[Signature]  
 Authorized Signatory

CAINE HOLDINGS LTD.  
[Signature]  
 Authorized Signatory

I, DONALD A. DUFFY, a British Columbia Land Surveyor, of Prince George, in British Columbia, certify that I was present at and did personally superintend the survey represented by this plan, and that the survey and plan are correct. The survey was completed on the 5 day of MAY, 1981.

[Signature]

Authorized Signatory

Authorized Signatory

BANK OF MONTREAL  
 by its attorneys P/A No 028588  
[Signature]  
 Authorized Signatory ASSISTANT MANAGER CREDIT  
[Signature]  
 Authorized Signatory MANAGER CREDIT  
 Witness as to both signatures:  
[Signature]  
 3172 Bute Crescent, Coquitlam, B.C.  
 Utility Clerk

Approved under the Land Title Act this 18 day of JUNE, 1981.

[Signature]  
 Approving Officer, City of Prince George

Approved under the Land Title Act this 14 day of JULY, 1981.

[Signature]  
 Approving Officer, Ministry of Transportation and Highways.

This plan lies within the Fraser-Fort George Regional District.

W.D. USHER & ASSOCIATES  
 LAND SURVEYORS  
 PRINCE GEORGE — B.C.  
 NB 68 9901A