

52250  
City of Prince George

PLAN OF SUBDIVISION OF  
LOTS 1 TO 7 INCLUSIVE & II TO 18 INCLUSIVE  
BLOCK 2, PLAN 1409  
DISTRICT LOT 417  
AND PART OF CLOSED LANE (PLAN B-7945) BLOCK 2, PLAN 1409  
DISTRICT LOT 417  
CARIBOO DISTRICT-BRITISH COLUMBIA

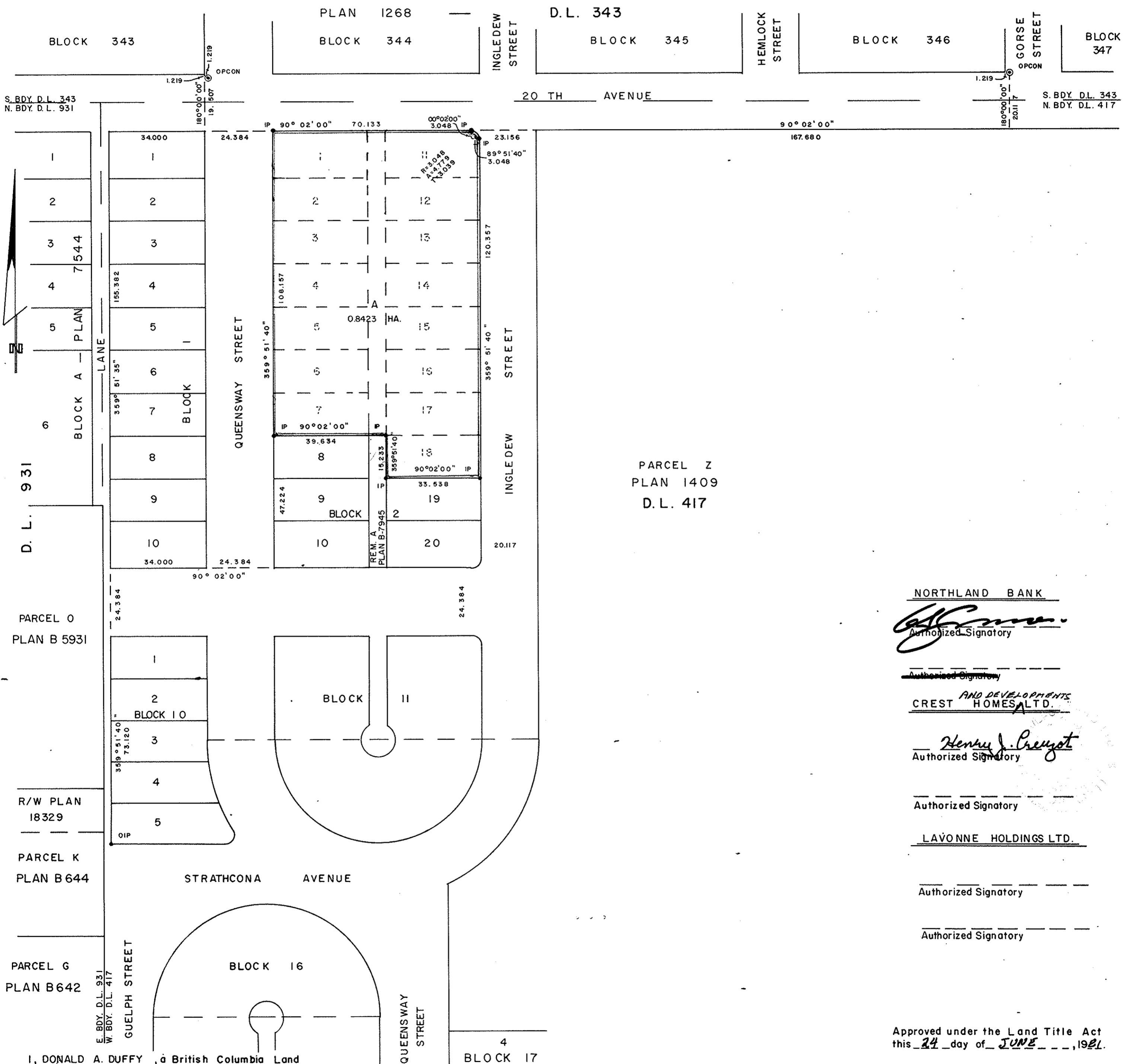
Plotted  
(JK)

JK

PLAN No 27500  
Deposited in the Land Title  
Office at Prince George, B.C. this  
14 day of Aug., 1981.

SCALE: 1 : 1000  
NOTE: Bearings are astronomic, derived from the south  
boundary of 20th Avenue, Plan 1409, D.L. 417.  
LEGEND:  $\odot$ OPCON denotes an old concrete monument found.  
 $\bullet$ OIP denotes an old iron pin found.  
 $\bullet$ IP denotes an iron pin set.

Registrar



PARCEL Z  
PLAN 1409  
D.L. 417

NORTHLAND BANK

*[Signature]*  
Authorized Signatory

*[Signature]*  
Authorized Signatory  
AND DEVELOPMENTS  
CREST HOMES LTD.

*[Signature]*  
Authorized Signatory  
Henry J. Creyot

Authorized Signatory

LAVONNE HOLDINGS LTD.

Authorized Signatory

Authorized Signatory

Approved under the Land Title Act  
this 24 day of JUNE, 1981.

*[Signature]*  
Approving Officer, City of Prince George

This plan lies within the Fraser-Fort George  
Regional District.

W.D. USHER & ASSOCIATES  
LAND SURVEYORS  
PRINCE GEORGE - B.C.  
NO 11 12077

I, DONALD A. DUFFY, a British Columbia Land  
Surveyor, of Prince George, in British Columbia,  
certify that I was present at and did personally  
superintend the survey represented by this plan,  
and that the survey and plan are correct. The  
survey was completed on the 9th day of December,  
1980.

*[Signature]*