

PLAN OF STATUTORY RIGHT-OF-WAY
 FOR MUNICIPAL UTILITIES THROUGH
 LOTS 20 & 21, PLAN 27420
 DISTRICT LOT 2611
 CARIBOO DISTRICT— BRITISH COLUMBIA

SCALE: 1 : 500



NOTE: Bearings are astronomic, derived from the south boundary of Lot 21, Plan 27420

LEGEND: • OIP denotes an old iron pin found.
 • IP denotes an iron pin set.

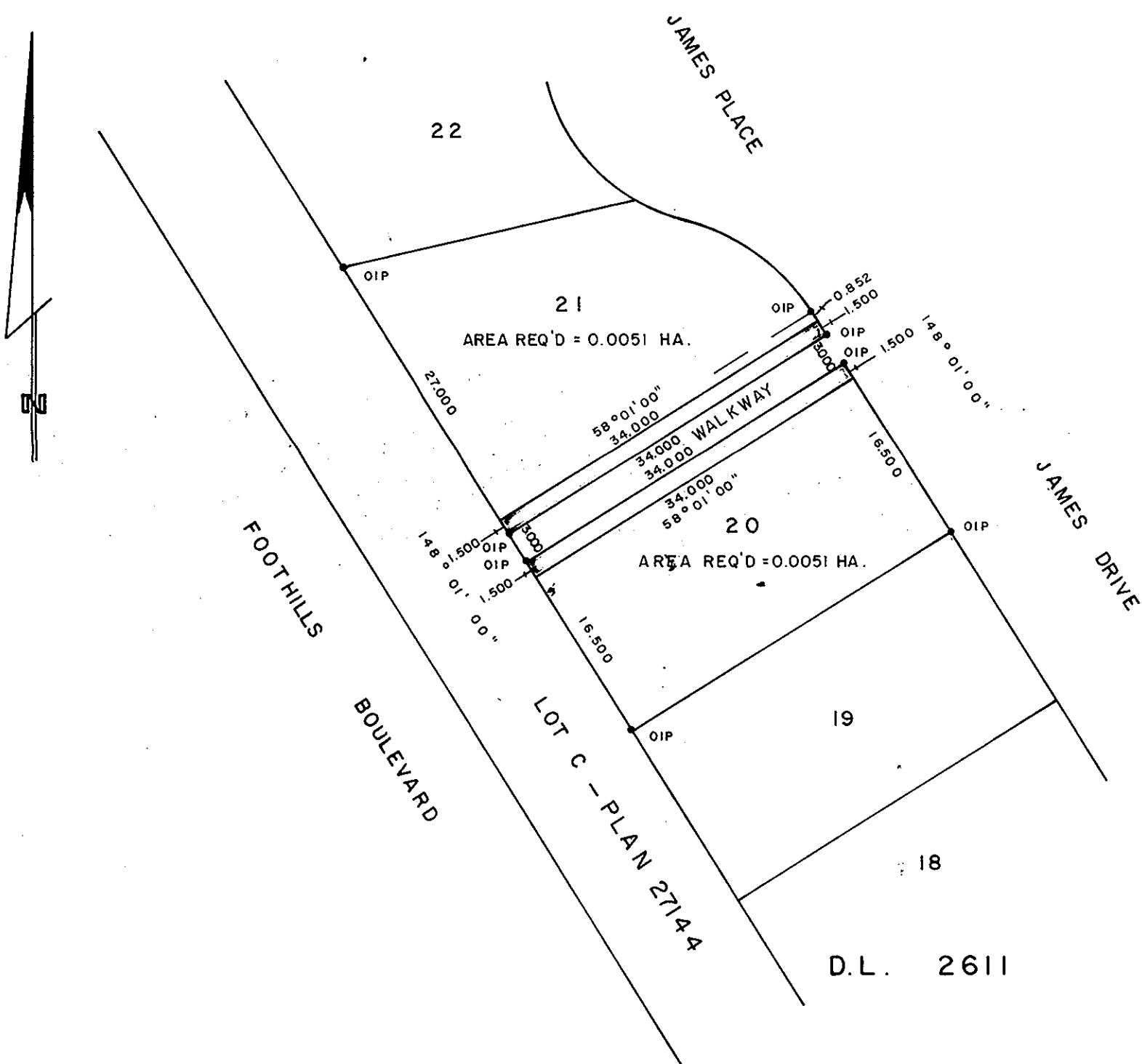
PLAN N^o 27421

Deposited in the Land Title Office at Prince George, B.C. this 16 day of JULY, 1981.

E. J. RAVEN
 Registrar *per: E.S.*

BOOK OF REFERENCE

PARCEL	AREA REQ'D
LOT 20	0.0051 HA.
LOT 21	0.0051 HA.
ALL IN PLAN	27420



I, DONALD A. DUFFY, a British Columbia Land Surveyor, of Prince George, in British Columbia, certify that I was present at and did personally superintend the survey represented by this plan, and that the survey and plan are correct. The survey was completed on the 8 day of JUNE, 1981.

This plan lies within the Fraser- Fort George Regional District.

W. D. USHER & ASSOCIATES
 LAND SURVEYORS
 PRINCE GEORGE — B.C.