

REFERENCE PLAN OF LANE AND  
ROAD DEDICATION OF PART OF LOT 60,  
PLAN 24282, D.L. 417,  
CARIBOO DISTRICT.  
SCALE: 1:750

All distances are in metres.

PLOTTED (JK)

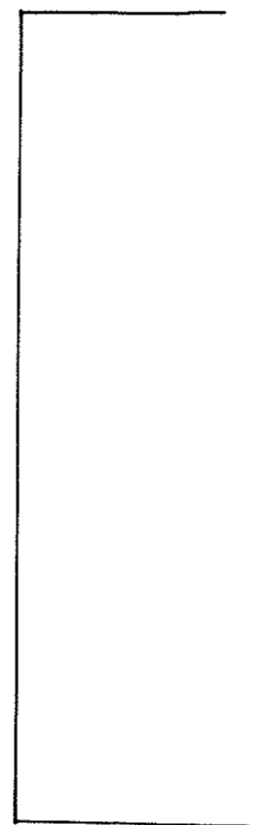
JK

PLAN 27419

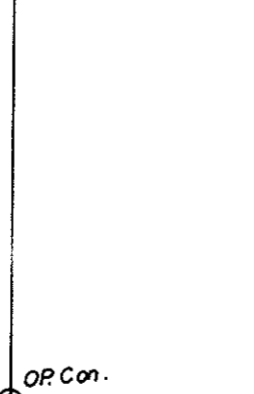
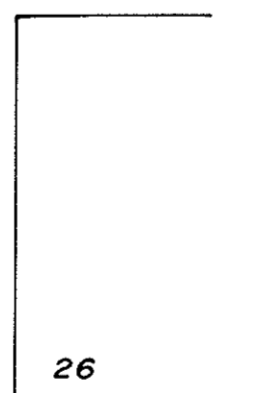
Deposited in the Land Title Office  
at Prince George, B.C.  
on the 15 day of July 1981.

*E. J. Raven*  
Registrar

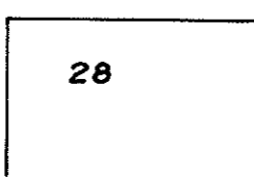
REGENT CRESCENT



ROYAL CRESCENT

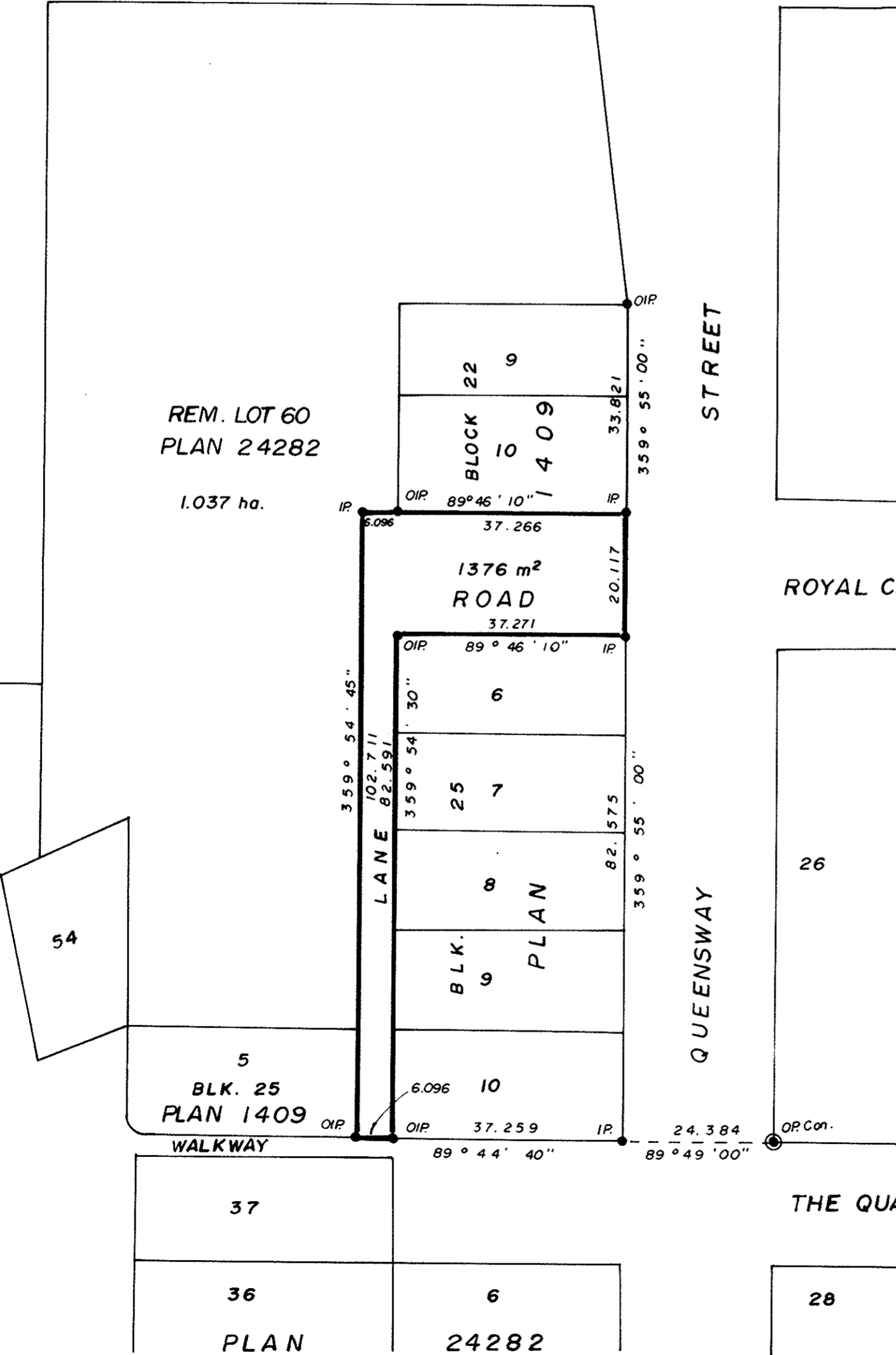


THE QUADRANT



REM. LOT 60  
PLAN 24282

1.037 ha.



Bearings are astronomic and are derived from  
Plan 24282.

- ⊙ P.con. .... Standard Concrete Post.
- ⊙ P.Rock .... Standard Rock Post.
- P.P. .... Standard Pipe Post.
- I.P. .... Standard Iron Post.
- P. .... Wooden Post.
- L.P. .... Lead Plug.
- Denoting "Old"
- WT. .... Denoting "Witness"
- CIP. .... Capped Iron Post.
- TH. .... Traverse Hub.

I, V. Bartell, a British Columbia  
land surveyor, of Prince George,  
in British Columbia, certify that I was present  
at and personally supervised the survey  
represented by this plan, and that the survey  
and plan are correct. The survey was completed  
on the 1 day of May 1981.

*V. Bartell*  
V. Bartell, B.C.L.S.

Approved under the Land Title Act on  
the 21 day of MAY 1981.

*C. E. Olat*  
Approving Officer  
City of Prince George

This Plan lies within the Fraser-Fort-George  
Regional District

CITY OF PRINCE GEORGE

Mayor *E. W. Munn*

Clerk *A. W. Buchanan*

McWilliam-Whyte-Goble & Associates  
B.C. Land Surveyors  
Kamloops-Prince George-Salmon Arm-Smithers  
FB/P D.L. 417 File No. 81094