

PLAN OF SUBDIVISION OF
 LOTS 16 & 17, PLAN 23009
 DISTRICT LOT 2013
 CARIBOO DISTRICT-BRITISH COLUMBIA

SCALE: 1 : 500

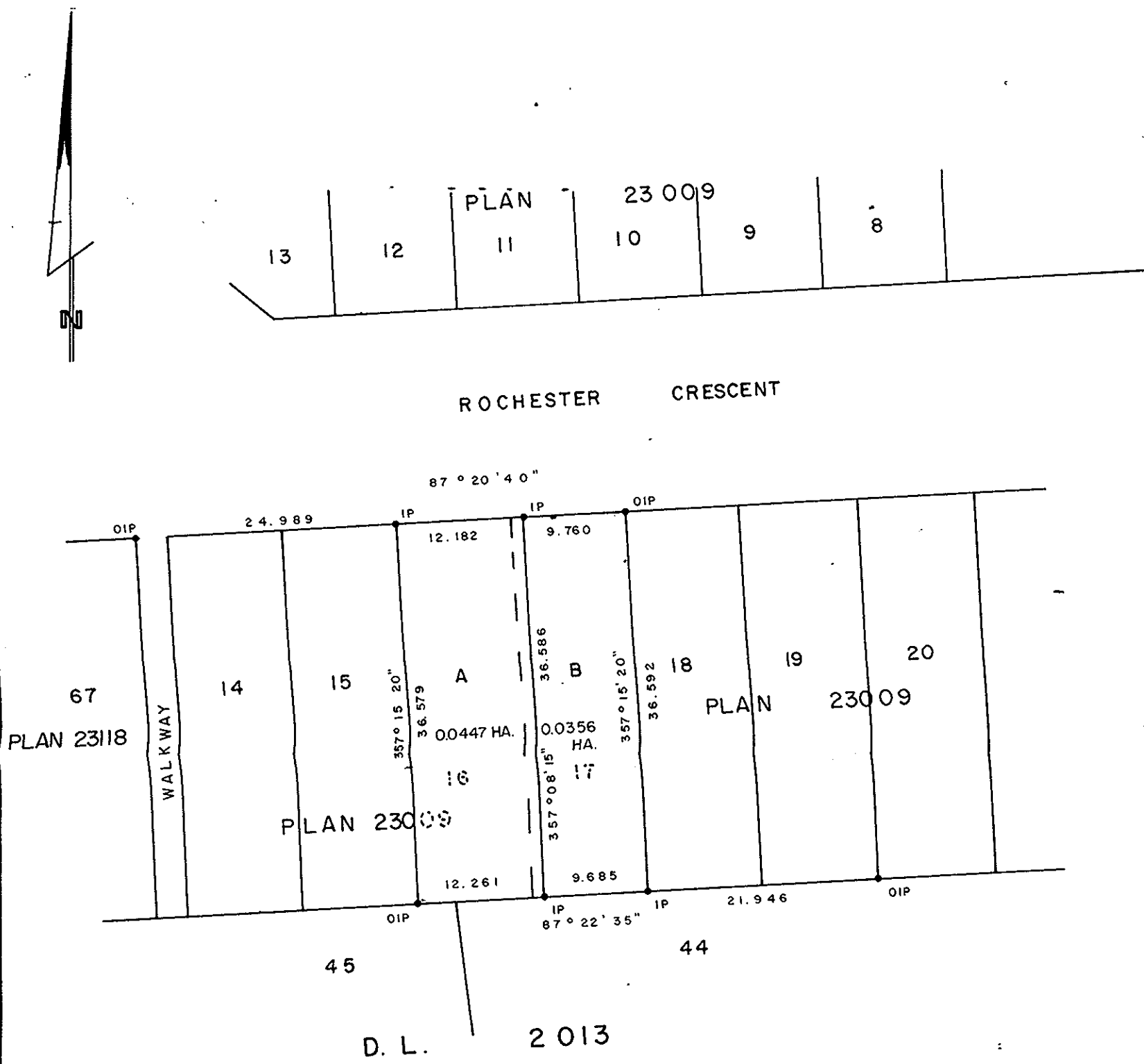


NOTE: Bearings are astronomic, derived from the south boundary of Rochester Crescent, Plan 23009 & Plan 23118.

LEGEND: • OIP denotes an old iron pin found.
 • IP denotes an iron pin set.

PLAN No 27415
 Deposited in the Land Title Office at Prince George, B.C. this 14 day of JULY, 1981.

E. J. RAVEN
 Registrar



I, RONALD L. JOHNS, a British Columbia Land Surveyor, of Prince George, in British Columbia, certify that I was present at and did personally superintend the survey represented by this plan, and that the survey and plan are correct. The survey was completed on the 9th day of JUNE, 1981.

R. L. Johns

SELECT URBAN PROPERTIES LTD.

Authorized Signatory

J. H. Charland
 Authorized Signatory

Approved under the Land Title Act this 18 day of JUNE, 1981.

C. E. Obit
 Approving Officer, City of Prince George

This plan lies within the Fraser-Fort George Regional District.

W. D. USHER & ASSOCIATES
 LAND SURVEYORS
 PRINCE GEORGE — B.C.
 00 15, 19 12834