

PLAN OF STATUTORY RIGHT-OF-WAY  
 FOR MUNICIPAL UTILITIES THROUGH  
 LOT 21, PLAN 27411  
 DISTRICT LOTS 2611 & 8174  
 AND LOT 22, PLAN 27411  
 DISTRICT LOT 2611  
 CARIBOO DISTRICT—BRITISH COLUMBIA

SCALE: 1 : 500



PLAN N<sup>o</sup> **27 412**

Deposited in the Land Title  
 Office at Prince George, B.C. this  
 14. day of JULY, 1981.

NOTE: Bearings are astronomic, derived from the  
 east boundary of Lot 22, Plan 27411

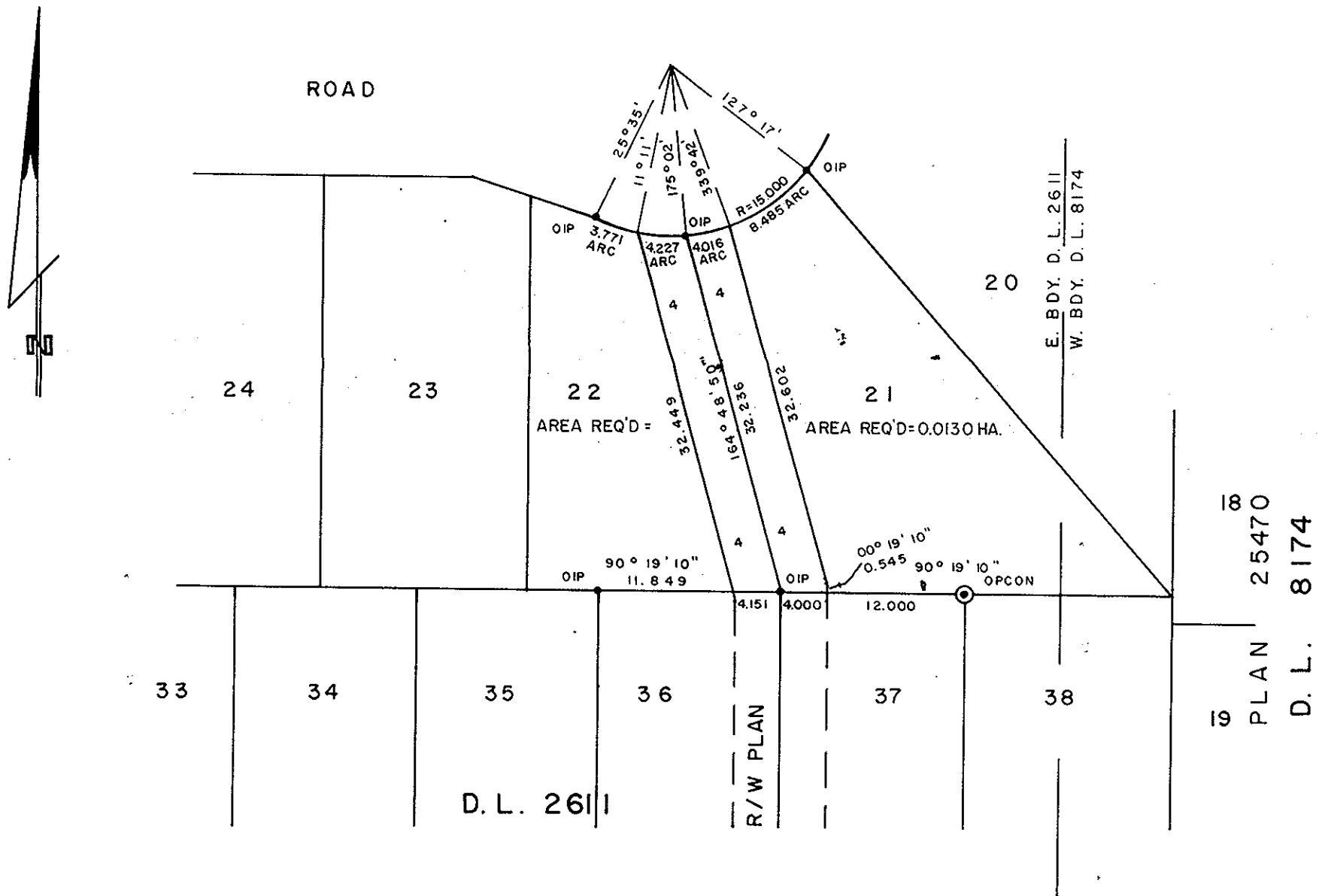
**E. J. RAVEN**  
 Registrar

per: *ES*

LEGEND: • OIP denotes an old iron pin found.  
 ⊙ OPCON denotes an old concrete monument found.

BOOK OF REFERENCE

PARCEL	AREA REQD
LOT 21	0.0130 HA.
LOT 22	0.0129 HA.
ALL IN PLAN	



I, DONALD A. DUFFY, a British Columbia Land  
 Surveyor, of Prince George, in British Columbia,  
 certify that I was present at and did personally  
 superintend the survey represented by this plan,  
 and that the survey and plan are correct. The  
 survey was completed on the 8 day of JUNE,  
 1981.

*[Handwritten signature of Donald A. Duffy]*

This plan lies within the Fraser- Fort George  
 Regional District.

W. D. USHER & ASSOCIATES  
 LAND SURVEYORS  
 PRINCE GEORGE — B.C.