

PLAN OF SUBDIVISION
OF PART OF REMAINDER OF BLOCK B,
D.L. 751, and PART OF REMAINDER
OF S.W. 1/4 OF D.L. 751, CARIBOO DISTRICT.

*Realtor 30160 000
30225 000
20225
1/2*

PLAN NO. 27361

DEPOSITED IN THE LAND TITLE OFFICE AT
PRINCE GEORGE THIS 23 DAY OF June 1981.

E. J. Larson
REGISTRAR

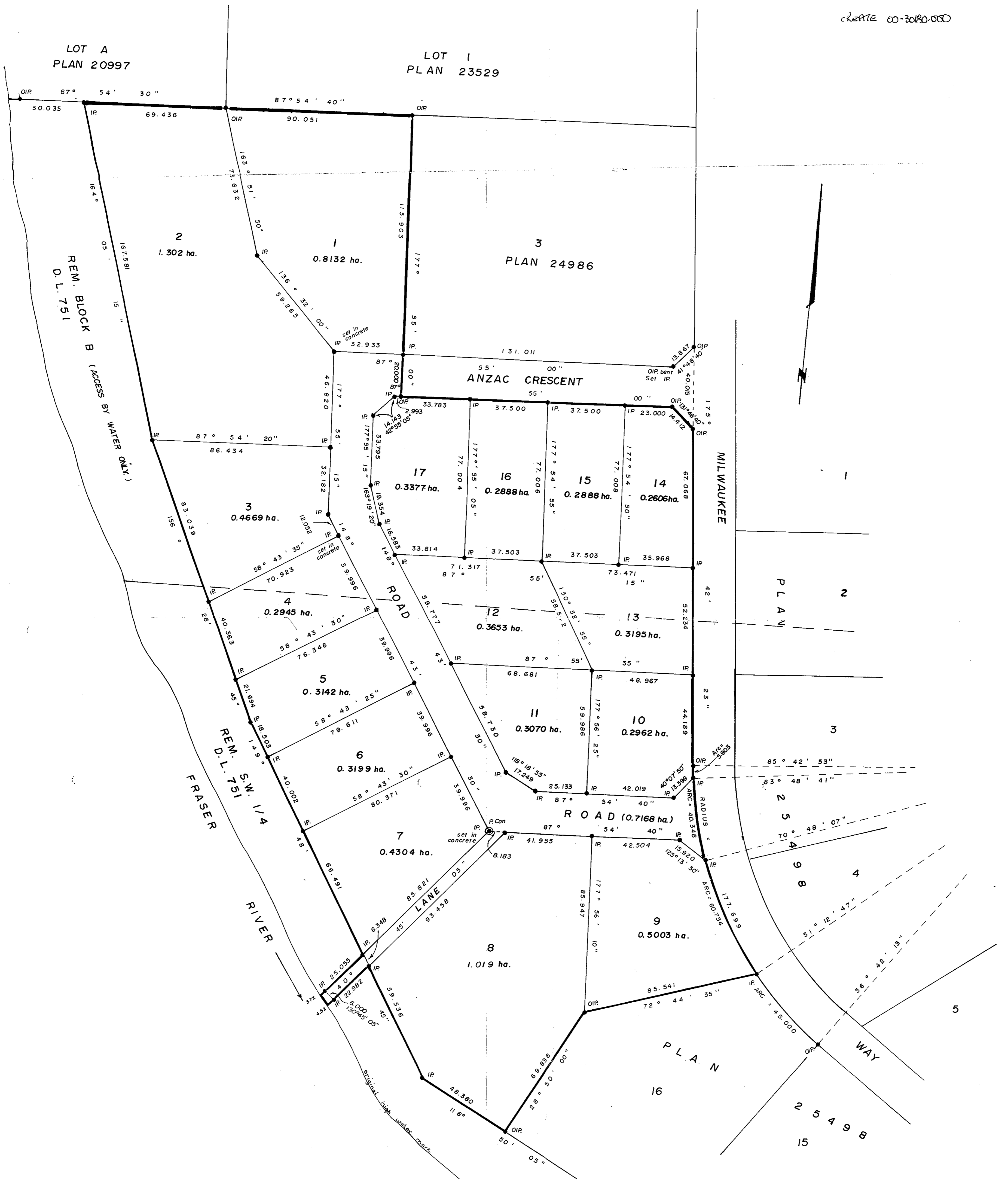
SCALE: 1:1000



ALL DISTANCES ARE IN METRES.

PARENT 00-30025-000

CREATE 00-3080-000



BEARINGS ARE ASTRONOMIC DERIVED
FROM PLAN 25498 ROAD - 175° 42' 23"

- IP.....STANDARD IRON POST.
-DENOTES "OLD"
- PC.....POST IN CONCRETE

THE SEAL OF THE CITY OF PRINCE GEORGE
WAS AFFIXED HERETO IN THE PRESENCE OF:

MAYOR *E. W. Merritt*

CITY CLERK *S. D. Buchanan*

APPROVED UNDER THE LAND TITLE ACT
THIS 4 DAY OF JUNE 1981 (See B.C. Reg. 334/79)

C. J. Plot
APPROVING OFFICER
CITY OF PRINCE GEORGE

THIS PLAN NEED NOT COMPLY WITH CLAUSE (b)
OF SECTION 75 (1) OF THE LAND TITLE ACT.
THIS 12 DAY OF JUNE 1981.

[Signature]
APPROVING OFFICER - MINISTRY
OF TRANSPORTATION AND HIGHWAYS.

I, G. KILBRIDE, A BRITISH COLUMBIA LAND SURVEYOR,
OF PRINCE GEORGE IN BRITISH COLUMBIA, CERTIFY THAT I
WAS PRESENT AT AND PERSONALLY SUPERINTENDED THE
SURVEY REPRESENTED BY THIS PLAN AND THAT THE
SURVEY AND PLAN ARE CORRECT THE SAID SURVEY
WAS COMPLETED ON THE 20th DAY OF MARCH, 1981

Gordon Kilbride
G. KILBRIDE, B.C.L.S.

THIS PLAN LIES WITHIN THE FRASER FORT
GEORGE REGIONAL DIST

Mc WILLIAM WHYTE GOBLE & ASSOCIATES,
B.C. LAND SURVEYORS,
PRINCE GEORGE-KAMLOOPS-SMITHERS SALMON ARM

REF. NO. 81038

619-6-81