

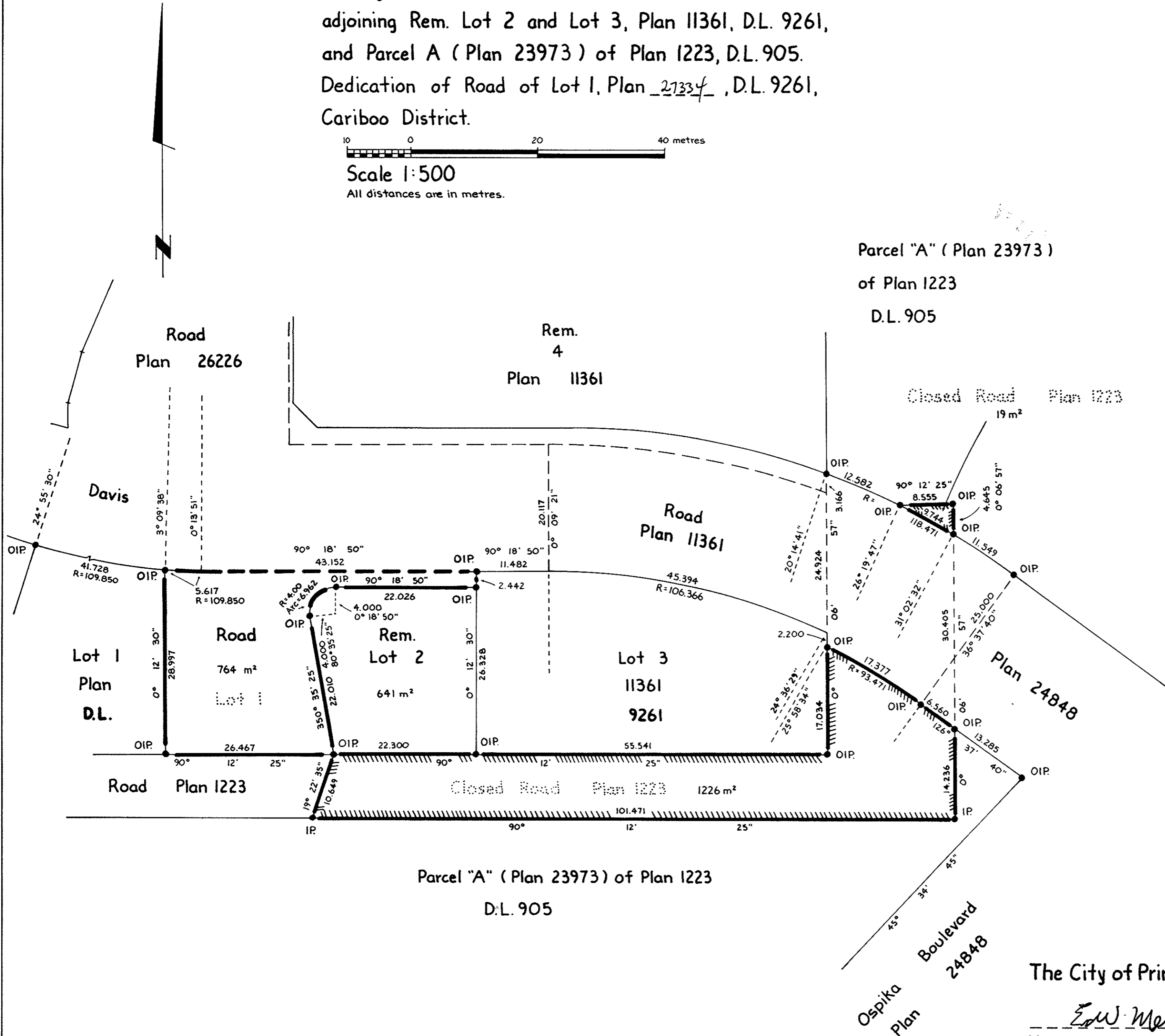
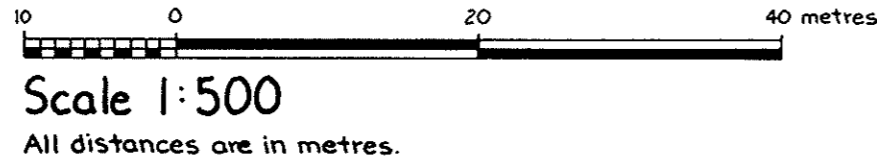
Plotted.

GG

Plan No. 27335
Deposited in the Land Title Office at
Prince George, B.C.,
this 26 day of June, 1981.

F. J. Pan
Registrar

Reference Plan to accompany By-law No. 3767
City of Prince George,
Closing Part of Road as shown on Plan 1223, D.L. 905,
adjoining Rem. Lot 2 and Lot 3, Plan 11361, D.L. 9261,
and Parcel A (Plan 23973) of Plan 1223, D.L. 905.
Dedication of Road of Lot 1, Plan 27335, D.L. 9261,
Cariboo District.



Bearings are astronomic derived from
Plan 24848.

Legend:
● IP..... Standard Iron Post.
○..... Denotes "Old"

I, V. Bartell, a British Columbia land surveyor, of
Prince George, in British Columbia, certify that
I was present at and personally superintended
the survey represented by this plan, and that
the survey and plan are correct. The survey
was completed on the 26 day of
February, 1981.

Victor Bartell
V. Bartell, B.C.L.S.

Approved under the Land Title Act on
the 25 day of MAY, 1981.

C. E. Olet
Approving Officer,
City of Prince George.

This plan lies within the Fraser - Fort George
Regional District.

McWilliam, Whyte, Goble & Associates,
B.C. Land Surveyors,
Prince George - Kamloops - Smithers - Salmon Arm

Ref. No. 79014 (D.L. 905) D.L. 9261

The City of Prince George

Edw. Merritt
Mayor

A. D. Buchanan
City Clerk