

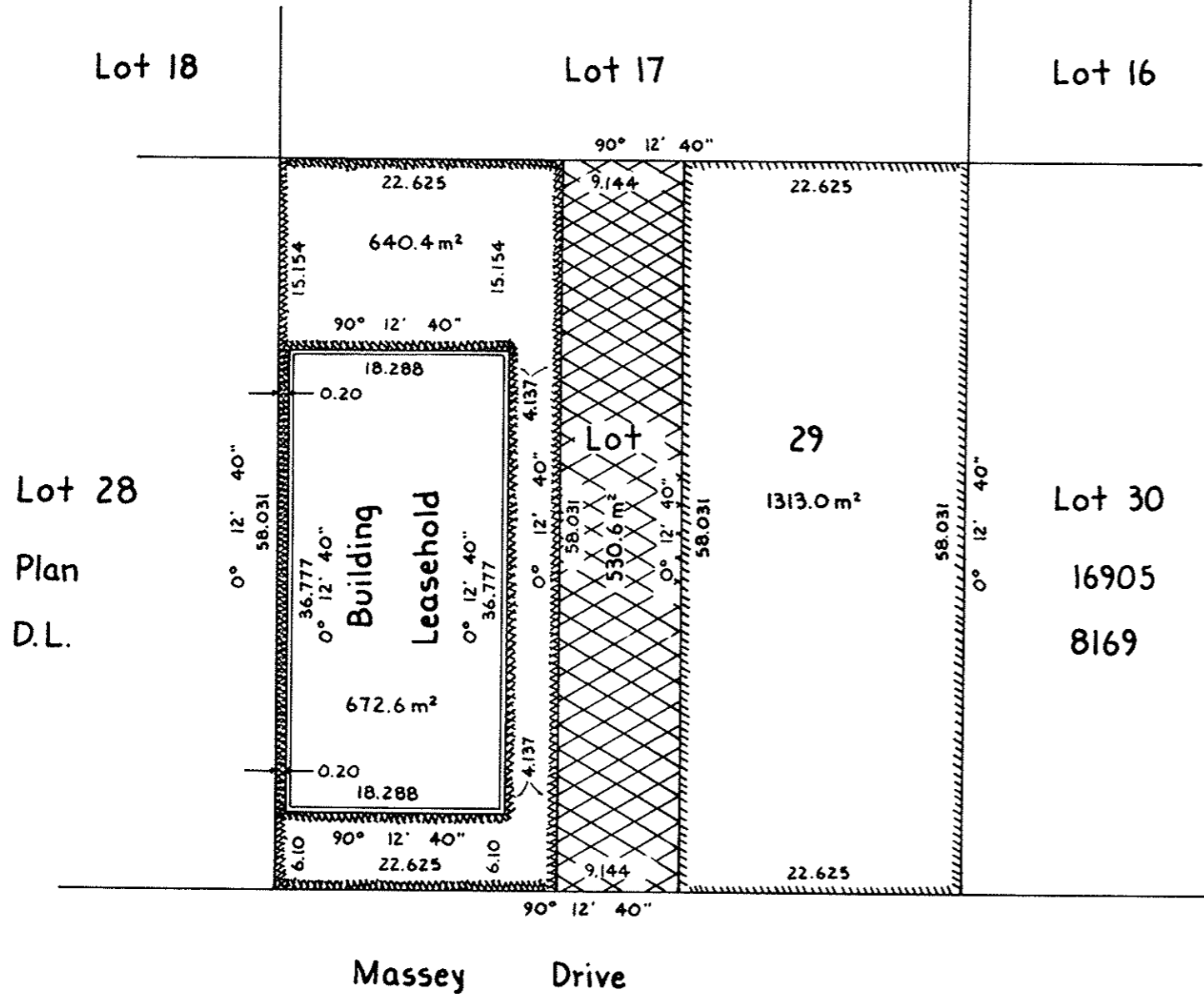
Explanatory Plan to accompany
 Building Leasehold of Part of Lot 29, Plan 16905,
 and adjoining Easement in Lot 29, Plan 16905,
 D.L. 8169, Cariboo District.

VOID.

Plan No. 27317
 Deposited in the Land Title Office at
 Prince George, B.C., on the 9 day
 of June, 1981.

E.S. Rae
 Registrar

Scale 1:500



Lot 28
 Plan
 D.L.

Book of Reference		Lot 29, Plan 16905	
Description		Area	
	Building Leasehold "A"	672.6 m ²	
	Easement "B"	640.4 m ²	
	Easement "C"	530.6 m ²	
	Easement "D"	1313.0 m ²	

Certified Correct
 According to Land Title Office
 Records. This 21 day of
April, 1981.

V. Bartell
 V. Bartell, B.C.L.S.

S. Bdy. D.L. 8169

This plan lies within the Fraser-
 Fort George Regional District.

Ref. No. 81073

McWilliam, Whyte, Goble & Associates,
 B.C. Land Surveyors,
 Prince George - Kamloops - Smithers - Salmon Arm

FRASER-FORT GEORGE REGIONAL DISTRICT