

PLAN OF SUBDIVISION OF
LOT 4, PLAN 26430,
D.L. 751, CARIBOO DISTRICT.

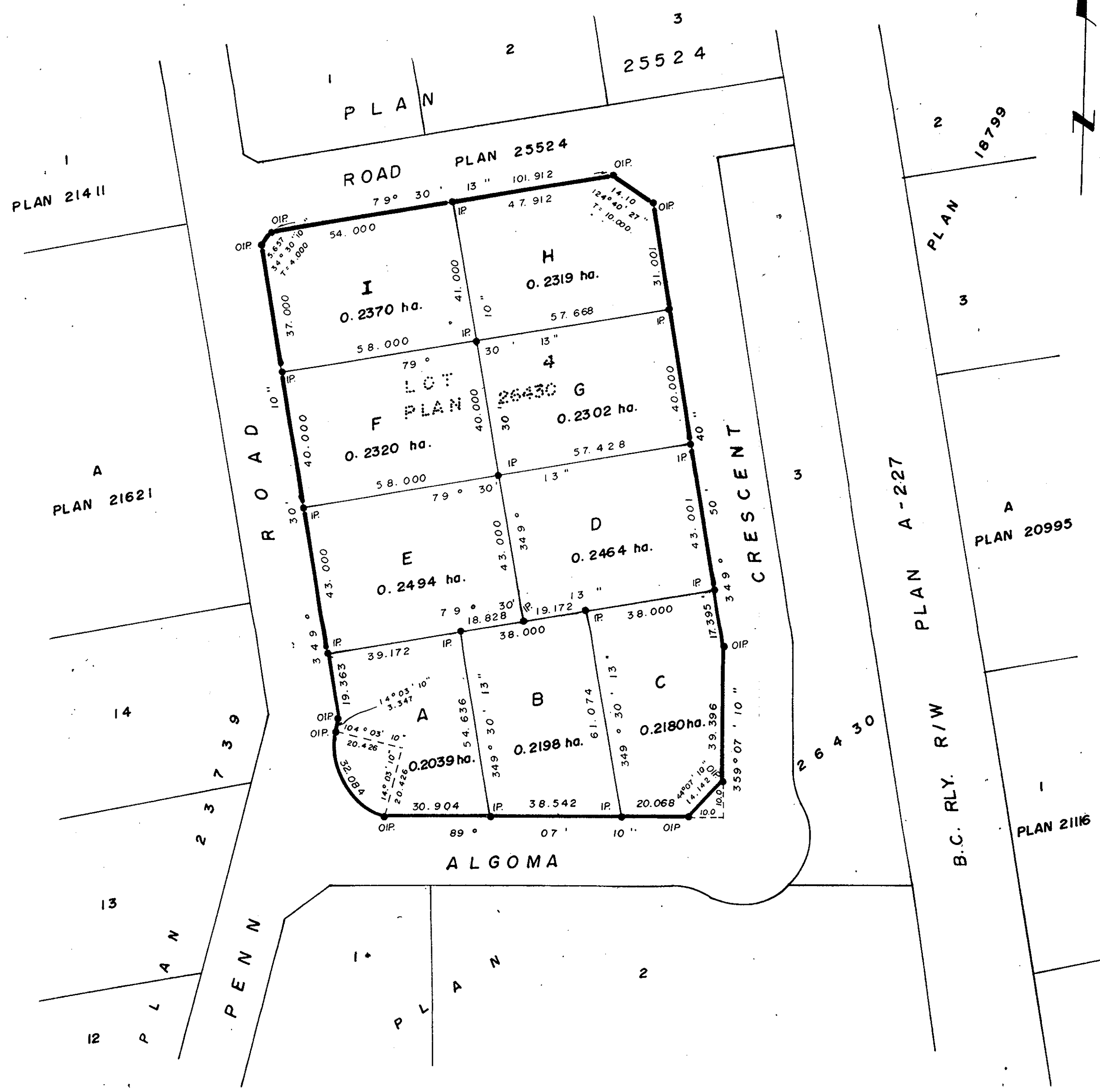
Scale: 1: 1000

ALL DISTANCES ARE IN METRES.

Plotted (KC)

PLAN 27316
Deposited in the Land Title Office
at Prince George, B.C.
on the 9. day of JUNE 1981.

E.J. RAVEN
Registrar



Bearings are astronomic and are derived from
Plan 26430.

- ⊙ R.con. Standard Concrete Post.
- ⊙ P.Rock Standard Rock Post.
- PP. Standard Pipe Post.
- I.P. Standard Iron Post.
- P. Wooden Post.
- L.P. Lead Plug.
- Denoting "Old"
- WT. Denoting "Witness"
- CIP. Capped Iron Post.
- TH. Traverse Hub.

I, V. Bartell, a British Columbia
land surveyor, of Prince George,
in British Columbia, certify that I was present
at and personally supervised the survey
represented by this plan, and that the survey
and plan are correct. The survey was completed
on the 12 day of March 1981.

V. Bartell
V. Bartell, B.C.L.S.

Approved under the Land Title Act on
the 4 day of JUNE 1981.

C. E. Olat
Approving Officer
City of Prince George

This Plan lies within the Fraser, Fort George
Regional District

THE SEAL OF THE CITY OF PRINCE GEORGE
WAS AFFIXED HERETO IN THE PRESENCE OF:

E. W. Mearns
MAYOR

A. W. Buchanan
CITY CLERK

McWilliam - Whyte - Goble & Associates
B.C. Land Surveyors
Kamloops - Prince George - Salmon Arm - Smithers
FB/P D.L. 751 File No. 81037