

PLAN OF SUBDIVISION OF
 LOT 71, PLAN 24401
 DISTRICT LOT 4048
 CARIBOO DISTRICT - BRITISH COLUMBIA

Plotted *40*

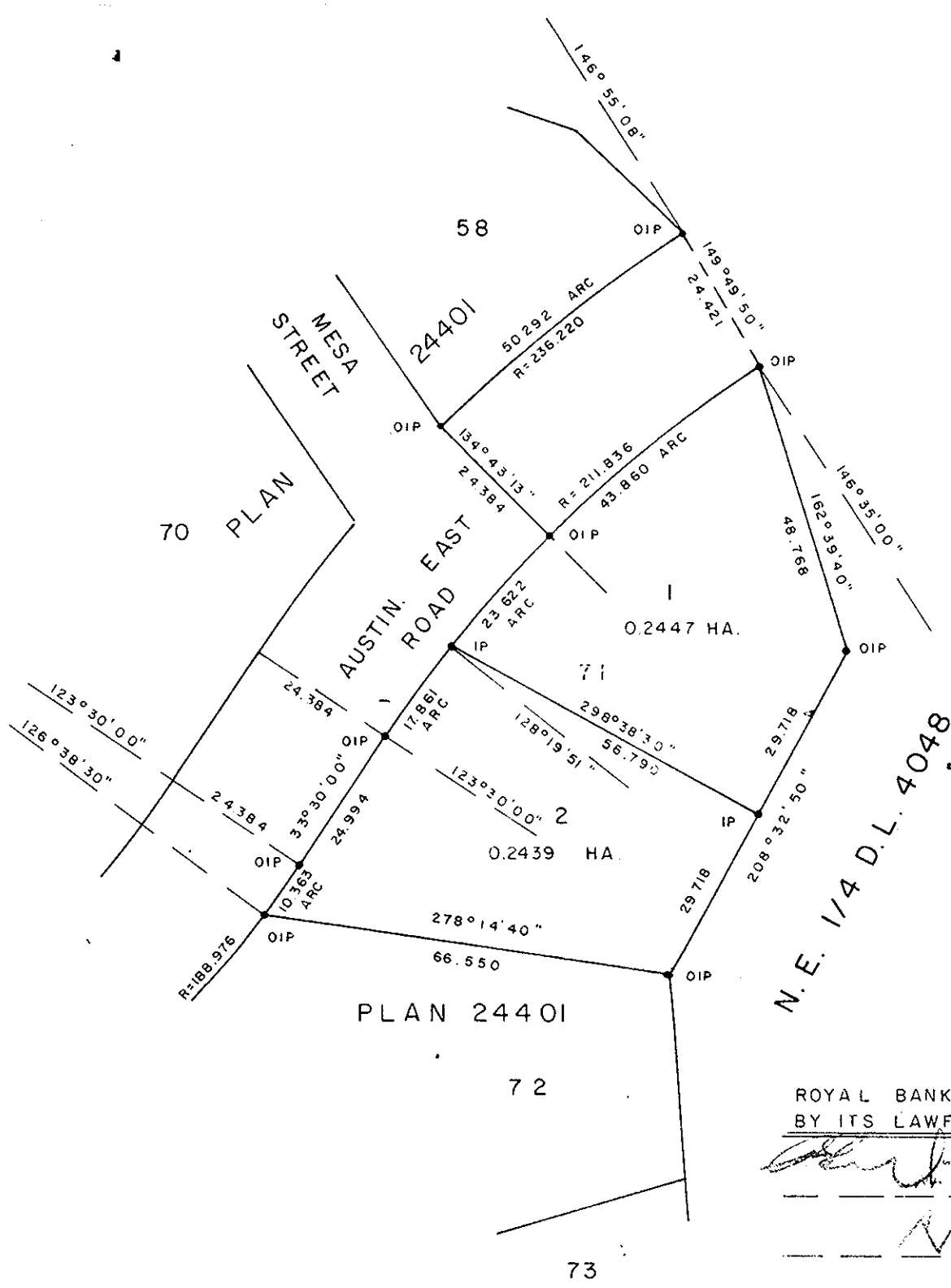
SCALE: 1 : 1000

NOTE: Bearings are astronomic, derived from the east boundary of Lot 71, Plan 24401.

LEGEND: • OIP denotes an old iron pin found.
 • IP denotes an iron pin set.

PLAN No **27301**
 Deposited in the Land Title Office at Prince George, B.C. this 4 day of JUNE, 1981.

E.S. RAVEN
 Registrar



N.E. 1/4 D.L. 4048

ROYAL BANK OF CANADA
 BY ITS LAWFUL ATTORNEYS

[Signature]

[Signature]

I, DONALDA DUFFY, a British Columbia Land Surveyor, of Prince George, in British Columbia, certify that I was present at and did personally superintend the survey represented by this plan, and that the survey and plan are correct. The survey was completed on the 9th day of Sept., 1980.

GLENVIEW ESTATES LTD
[Signature]
 Authorized Signatory

 Authorized Signatory

Approved under the Land Title Act this 27 day of MAY, 1981

[Signature]
 Approving Officer, City of Prince George

This plan lies within the Fraser-Fort George Regional District

W. D. USHER & ASSOCIATES
 LAND SURVEYORS
 PRINCE GEORGE - B.C.
 10640 A

H.O. 52558