

PLAN TO ACCOMPANY
 BYLAW No. 3727 OF THE CITY OF PRINCE GEORGE
 (SECTION 574 OF THE MUNICIPAL ACT)
 CLOSING PART OF ROAD ADJACENT TO LOT A, PLAN 22375
 AND DEDICATING AS ROAD
 PART OF LOT A, PLAN 22375, DISTRICT LOT 4039
 CARIBOO DISTRICT, BRITISH COLUMBIA
 SCALE, 1:1000

PLOTTED

HS

PLAN No. 22312
 Deposited in the Land Title
 Office at Prince George, B.C. this
 11 day of May, 1982

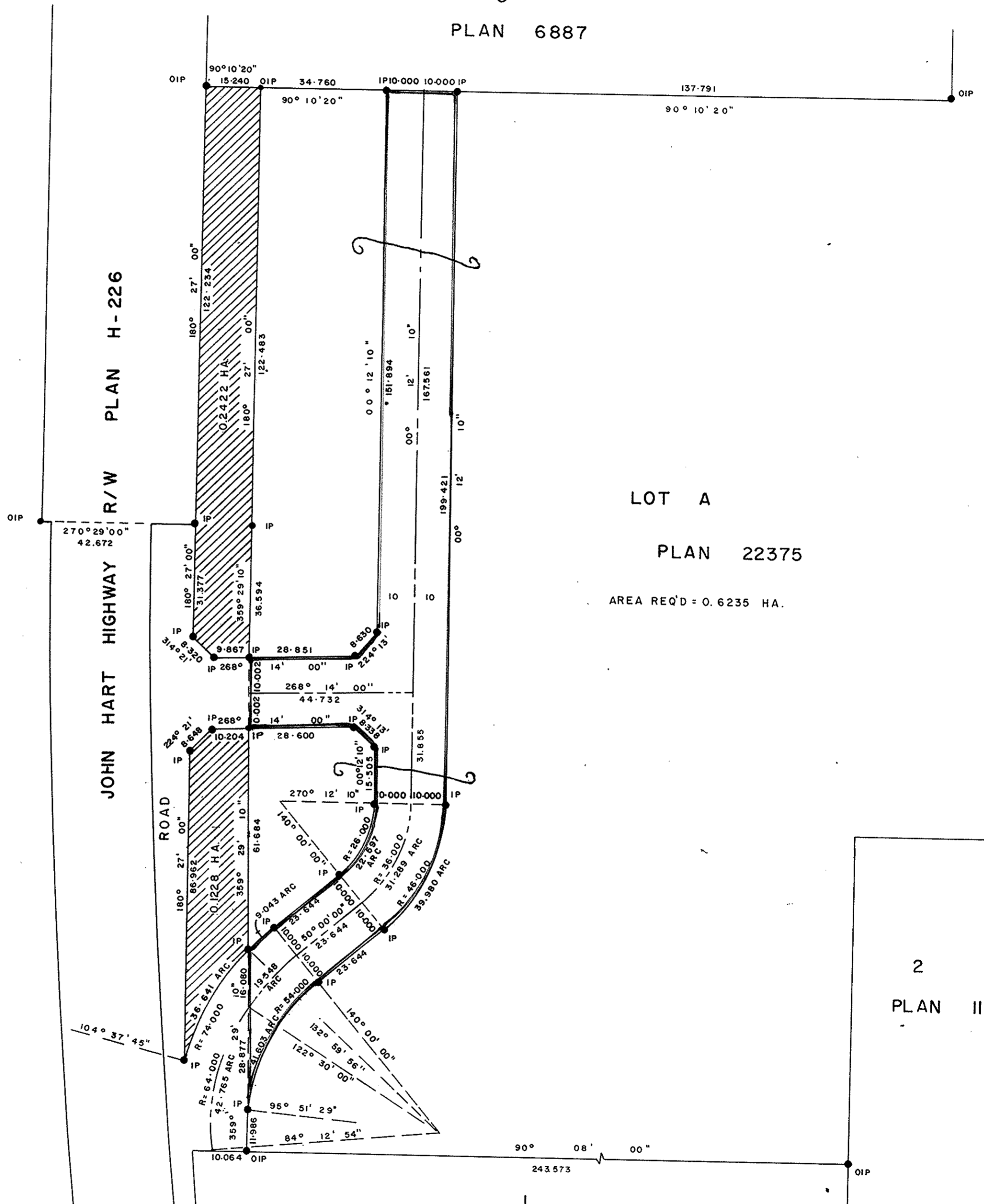
Registrar *E.S. [unclear]*

LEGEND

- OIP DENOTES AN OLD IRON PIN FOUND
- IP DENOTES AN IRON PIN SET

3

PLAN 6887



LOT A

PLAN 22375

AREA REQ'D = 0.6235 HA.

2

PLAN 11926

PLAN 11926

I, DONALD A. DUFFY of the City of Prince George,
 a British Columbia Land Surveyor, make oath and say
 that I was present at and did personally superintend
 the survey represented by this plan and that the survey
 and plan are correct. The said survey was completed
 on the 15 day of JUNE, 1982

[Signature]
 B.C.L.S.

Sworn before me this
 day of _____, 19__

A Commissioner for taking Affidavits
 for British Columbia.

This plan lies within the Fraser-Fort George
 Regional District.

W. D. USHER & ASSOCIATES
 LAND SURVEYORS
 PRINCE GEORGE B.C.
 NB 2 7887 B