

PLAN OF SUBDIVISION OF
 BLOCK A OF
 S. E. 1/4 DISTRICT LOT 2424
 AND PART OF S.W. 1/4 OF S. E. 1/4
 OF DISTRICT LOT 2424
 CARIBOO DISTRICT—BRITISH COLUMBIA

SCALE: 1 : 2000 "

NOTE: Bearings are astronomic, derived from
 the north boundary of Block A .

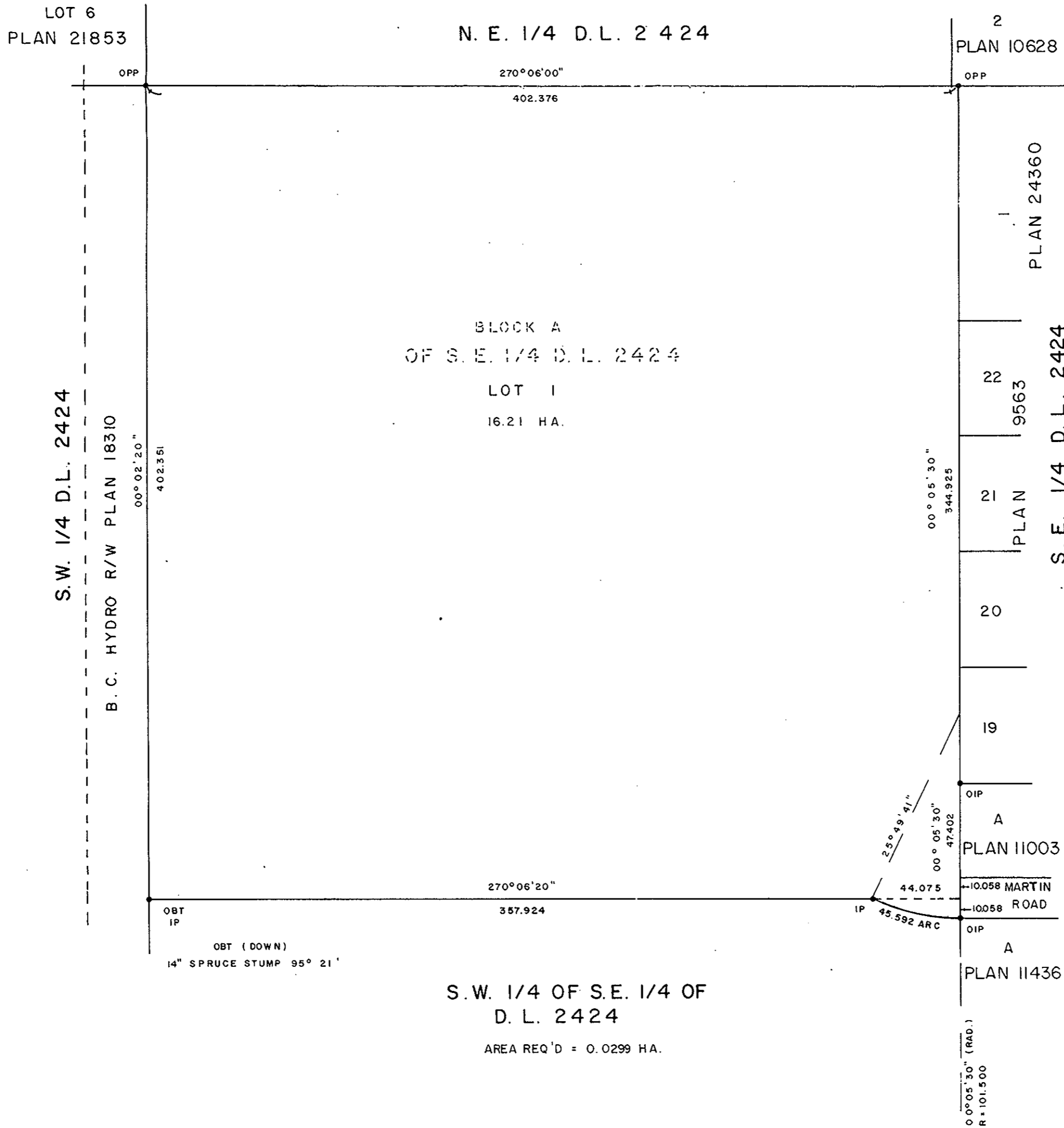
LEGEND: • OPP denotes an old pipe post found.
 • OIP denotes an old iron pin found.
 • IP denotes an iron pin set.
 • OBT denotes old bearing tree.

1277ED

PLAN N^o 27163

Deposited in the Land Title
 Office at Prince George, B.C. this
 28 day of April, 1980.

E.S. Shaw
 Registrar



I, DONALD A. DUFFY of the City of Prince George, a British Columbia Land Surveyor, make oath and say that I was present at and did personally superintend the survey represented by this plan and that the survey and plan are correct. The said survey was completed on the 11 day of FEB, 1980.

[Signature]
 B.C.L.S.

Sworn before me this _____
 day of _____, 19__

GLENVIEW ESTATES LTD.

 Authorized Signatory

 Authorized Signatory

Approved under the Land Title Act
 this 28 day of DEC, 1980

P.E. Oat
 Approving Officer, City of Prince George

This plan lies within the Fraser-Fort George
 Regional District.