

PLAN OF SUBDIVISION OF
PART OF LOT 2, PLAN 13000
DISTRICT LOT 4040
CARIBOO DISTRICT - BRITISH COLUMBIA

TITLE #11 50 1163

SCALE: 1 : 1000

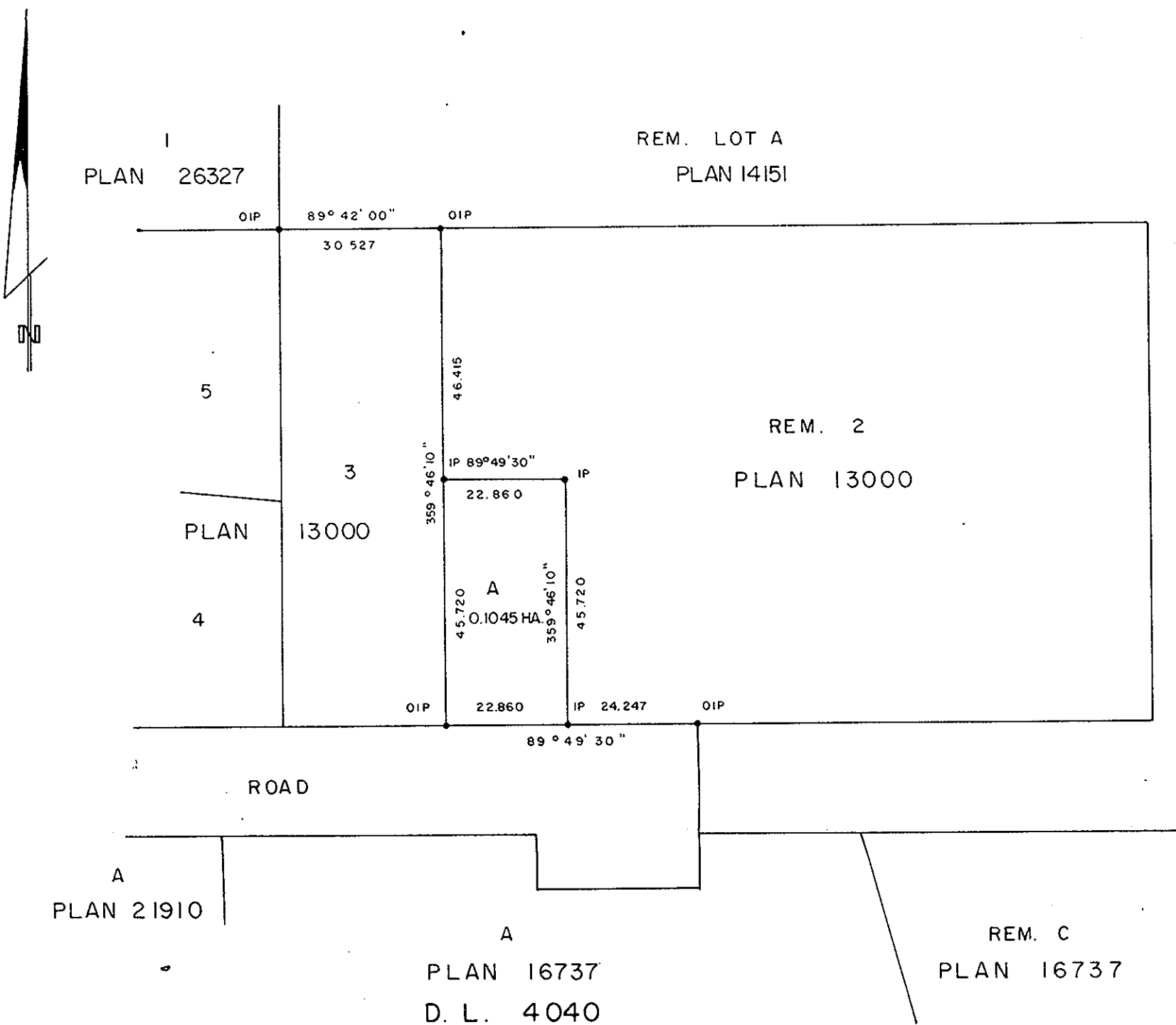
NOTE: Bearings are astronomic, derived from the north boundary of Lot 3, Plan 13000.

LEGEND: •OIP denotes an old iron pin found.
•IP denotes an iron pin set.

PLAN No 27096

Deposited in the Land Title Office at Prince George, B.C. this 8 day of April, 1981.

E. S. Pan
Registrar



Don Klassen
DON KLASSEN

DON PENNER
11950-230ST MAPLE RIDGE
ROAD CONSTRUCTION
Don Penner
SPRUCE CREDIT UNION

Approved under the Land Title Act this 17 day of MAR, 1981

C. E. Dhot
Approving Officer, City of Prince George

This plan lies within the Fraser-Fort George Regional District.

I, R. L. JOHNS, a British Columbia Land Surveyor, of Prince George, in British Columbia, certify that I was present at and did personally superintend the survey represented by this plan, and that the survey and plan are correct. The survey was completed on the 12th day of March, 1981.

R. L. Johns

W. D. USHER & ASSOCIATES
LAND SURVEYORS
PRINCE GEORGE - B.C.
NO 29 12415