

PLAN OF SUBDIVISION OF  
 THAT PART OF S.E. 1/4 OF S.W. 1/4 OF  
 DISTRICT LOT 4040 LYING NORTH & EAST  
 OF PLAN H-226, & LOT 1, PLAN 17762  
 DISTRICT LOT 4040 &  
 REMAINDER OF LOT A, PLAN B-683  
 DISTRICT LOT 4040  
 CARIBOO DISTRICT—BRITISH COLUMBIA

SCALE: 1 : 1000

NOTE: Bearings are astronomic, derived from the south  
 boundary of D.L. 4040 as shown on Plan 17762.

LEGEND: •OPP denotes an old pipe post found.  
 •OIP denotes an old iron pin found.  
 •IP denotes an iron pin set.

PLAN No **27071**

Deposited in the Land Title  
 Office at Prince George, B.C. this  
 3 day of April, 1981.

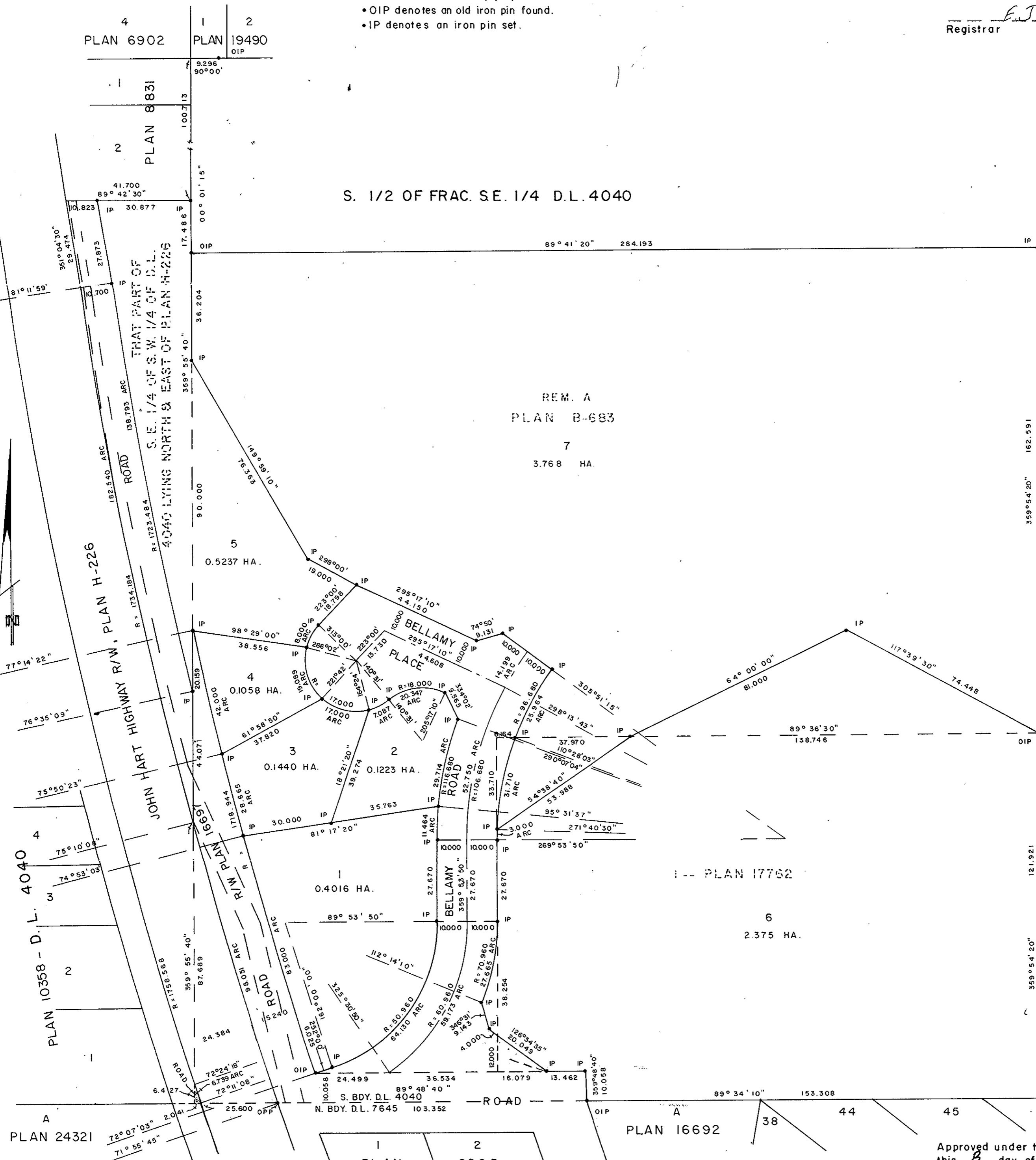
E.J. RAVEN  
 Registrar

S. 1/2 OF FRAC. S.E. 1/4 D.L. 4040

REM. A  
 PLAN B-683

7

3.768 HA.



*North-11112 bearings*

*50.571' 1.126' 1.126' 1.126'*

*Frank Simms*

Owner  
 Witness

I, DONALD A. DUFFY, a British Columbia Land  
 Surveyor, of Prince George, in British Columbia,  
 certify that I was present at and did personally  
 superintend the survey represented by this plan,  
 and that the survey and plan are correct. The  
 survey was completed on the 30 day of August,  
 1980.

*[Signature]*

D.L. 7645

Approved under the Land Title Act  
 this 12<sup>th</sup> day of January, 1981.

*[Signature]*  
 Approving Officer, Ministry of Transportation  
 and Highways.

REAPPROVED this 2<sup>nd</sup> day of March, 1981.

*[Signature]*  
 Approving Officer, Ministry of Transportation and  
 Highways.

MOUNT ALDER ESTATES LTD.

*[Signature]*  
 Authorized Signatory

*[Signature]*  
 Authorized Signatory

Approved under the Land Title Act  
 this 8 day of JAN., 1981.

*[Signature]*  
 Approving Officer, City of Prince George

This plan lies within the Fraser-Fort George  
 Regional District.

W.D. USHER & ASSOCIATES  
 LAND SURVEYORS  
 PRINCE GEORGE — B.C.  
 MK 24 8289