

26-226

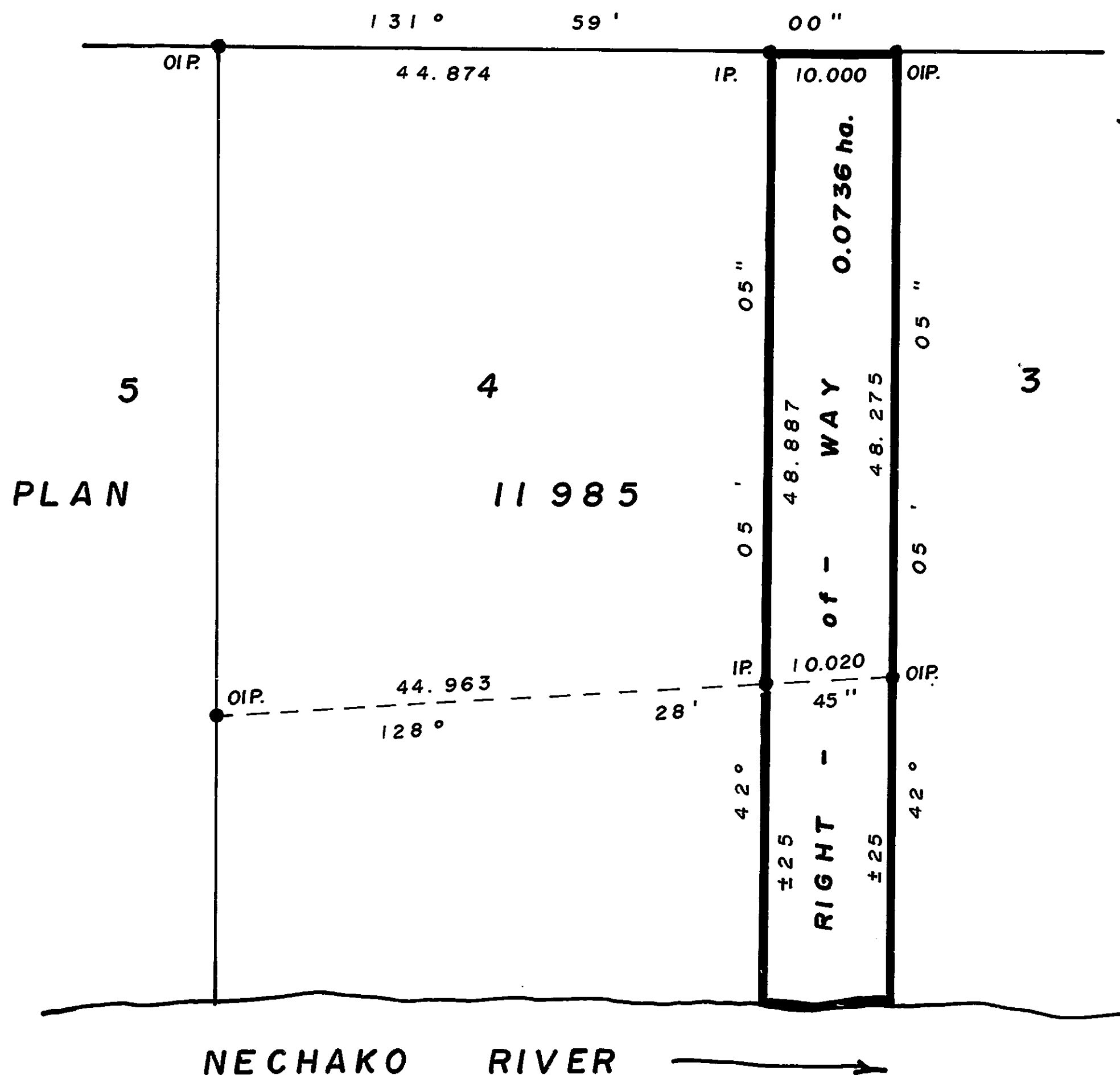
27011

PLAN NO. 27011

DEPOSITED IN THE LAND TITLE OFFICE AT PRINCE GEORGE THIS 20 DAY OF MARCH 1981.

E. J. RAVEN  
REGISTRAR

BENCH DRIVE



PLAN OF STATUTORY RIGHT-OF-WAY FOR STORM DRAIN IN LOT 4, PLAN 11985, DISTRICT LOT 2101, CARIBOO DISTRICT.

SCALE: 1: 500

ALL DISTANCES ARE IN METRES.

BEARINGS ARE ASTRONOMIC DERIVED FROM PLAN 11985- N.Bdy = 131° 59' 00"

- IP.....STANDARD IRON POST.
- ..... DENOTES "OLD"

I, G. KILBRIDE, A BRITISH COLUMBIA LAND SURVEYOR, OF PRINCE GEORGE IN BRITISH COLUMBIA, CERTIFY THAT I WAS PRESENT AT AND PERSONALLY SUPERINTENDED THE SURVEY REPRESENTED BY THIS PLAN AND THAT THE SURVEY AND PLAN ARE CORRECT. THE SAID SURVEY WAS COMPLETED ON THE 16th DAY OF FEBRUARY, 1981.

BOOK OF REFERENCE	
DESCRIPTION	AREA
LOT 4, PLAN 11985	0.0736 ha.

Gordon Kilbride  
G. KILBRIDE, B.C. L.S.

THIS PLAN LIES WITHIN THE FRASER FORT GEORGE REGIONAL DISTRICT.

McWILLIAM, WHYTE, GOBLE & ASSOCIATES.  
B.C. LAND SURVEYORS,  
PRINCE GEORGE-KAMLOOPS-SMITHERS-SALMON ARM.

REF. NO. 81018 (D.L. 2101)