

PLAN OF SUBDIVISION OF
 LOTS 1 & 2, PLAN 15687
 DISTRICT LOT 1433
 CARIBOO DISTRICT-BRITISH COLUMBIA
 SCALE: 1 : 1000

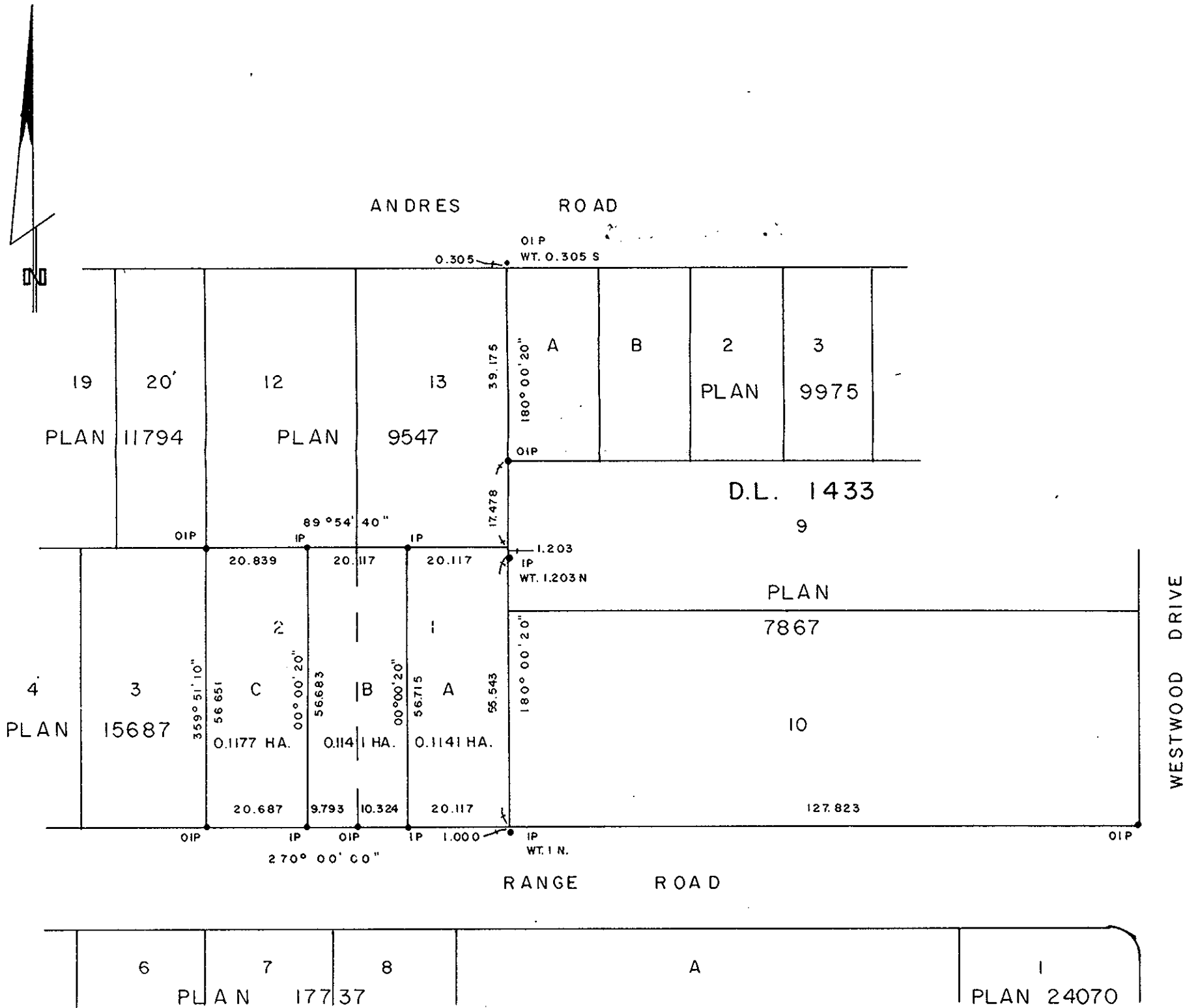
PLOTTED (HH)

NOTE: Bearings are astronomic, derived from the north boundary of Range Road as shown on Plan 15687.

PLAN N^o 26949
 Deposited in the Land Title Office at Prince George, B.C. this 3 day of March, 1981.

LEGEND: • OIP denotes an old iron pin found.
 • IP denotes an iron pin set.
 WT denotes witness.

R. J. Raw
 Registrar



Approved under the Land Title Act this 10 day of FEB, 1981

I, DONALD A. DUFFY, a British Columbia Land Surveyor, of Prince George, in British Columbia, certify that I was present at and did personally superintend the survey represented by this plan, and that the survey and plan are correct. The survey was completed on the 3rd day of February, 1981.

Owner John Bereznowski

Witness Rob Fullard

C. E. Obit
 Approving Officer, City of Prince George

206-715 Victoria St
Prince George B.C.
Notary Public

This plan lies within the Fraser-Fort George Regional District.

W. D. USHER & ASSOCIATES
 LAND SURVEYORS
 PRINCE GEORGE - B.C.
 NY 46 12379