

PLAN OF SUBDIVISION OF PART
OF LOT 78, PLAN 21450, D.L.2507,
CARIBOO DISTRICT.

SCALE: 1:750



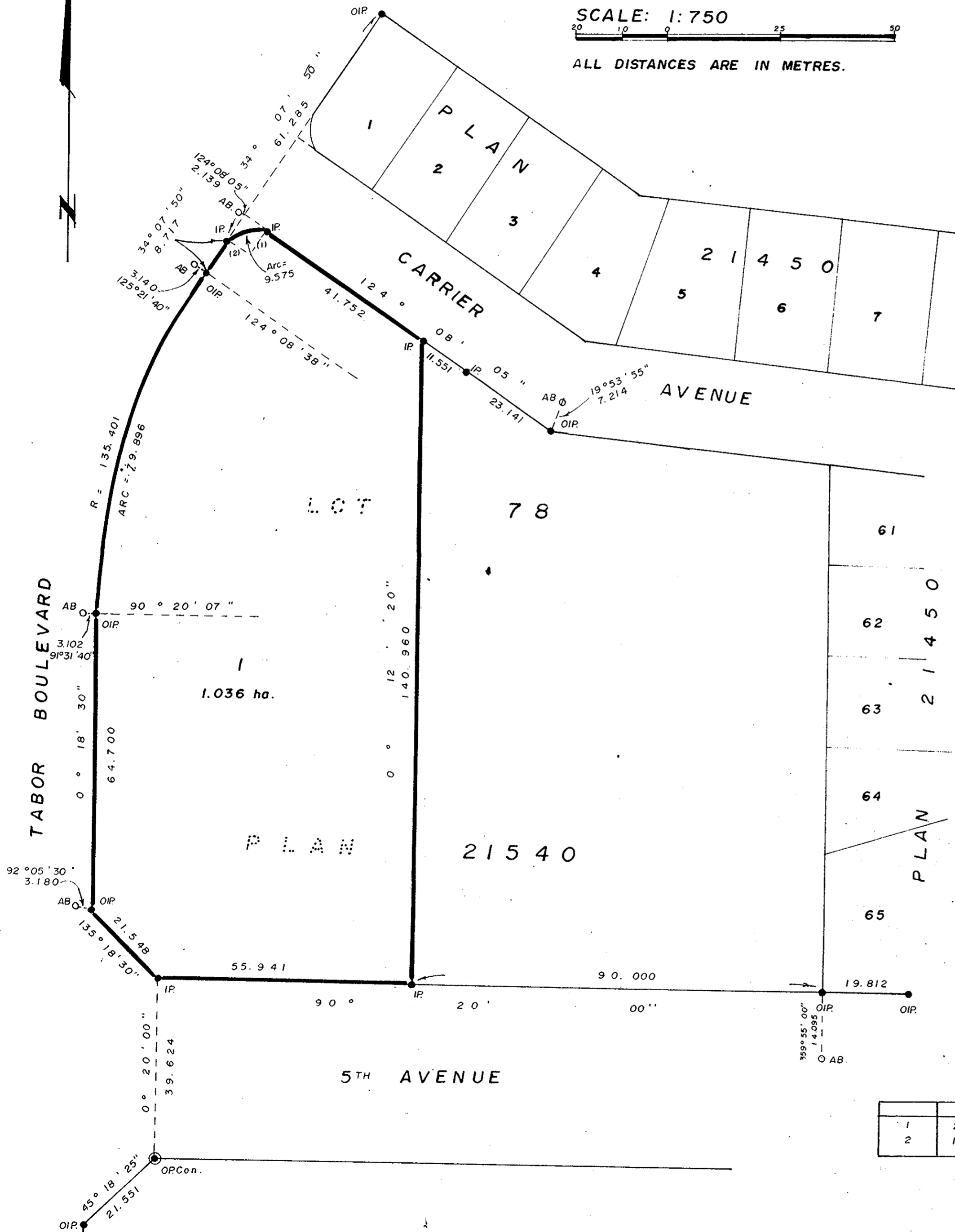
ALL DISTANCES ARE IN METRES.

PLOTTED (FM) (GM)

PLAN 26941

Deposited in the Land Title Office
at Prince George, B.C.
on the 2 day of MAR. 1981.

E. J. RAVEN
Registrar



Bearings are astronomic and are derived from
Plan 21450 - S Bdy L.78 - 90° 20' 00"

- P.con. Standard Concrete Post.
- P.Rock Standard Rock Post.
- P.P. Standard Pipe Post.
- I.P. Standard Iron Post.
- P. Wooden Post.
- L.P. Lead Plug.
- Denoting "Old"
- WT. Denoting "Witness"
- C.I.P. Capped Iron Post.
- TH. Traverse Hub.
- AB Aluminum Bolt.

I, Gordon Kilbride, a British Columbia
land surveyor, of Prince George,
in British Columbia, certify that I was present
at and personally superintended the survey
represented by this plan, and that the survey
and plan are correct. The survey was completed
on the 16 day of February 1981.

Gordon Kilbride
G. Kilbride, B.C.L.S.

Approved under the Land Title Act on
the 24 day of FEB. 1981.

C. E. Oost
Approving Officer
City of Prince George

This Plan lies within the Fraser Fort George
Regional District

The Seal of the City of Prince George
was affixed hereto in the presence of:

Owner: The City of Prince George

	BEARING	RADIUS
1	214° 07' 52"	6.096
2	124° 08' 05"	6.096

E. W. Menzies
Mayor

S. W. Buchanan
City Clerk

McWilliam - Whyte - Goble & Associates
B.C. Land Surveyors
Kamloops - Prince George - Salmon Arm - Smithers
FB/P File No. 80138